

LOVEDAY ROAD, EALING



£550,000

Tuffin & Wren are delighted to offer this unique, modern terrace house situated in a most convenient location, just moments from Northfields' many amenities. Refurbished and finished to a very high standard in 2022, the stylishly-presented accommodation is set over two floors and boasts two double bedrooms and a modern bathroom on the upper floor, with an entrance hall and open-plan living/dining/kitchen on the ground floor. Other benefits include the southerly facing courtyard garden with pedestrian access and vacant possession with therefore, no onward chain!

TUFFIN & WREN

Independent Estate Agents

Living Area - Alternative View



Stylish Fitted Kitchen Area



Principal Bedroom



Superb Fully-Tiled Bathroom



Further Information

For more details please call us on **020 8566 3366** or send an email to homes@tuffin-wren.co.uk.

Please note it is not our company policy to test services, heating systems and domestic appliances, therefore we cannot verify that they are in working order. Prospective purchasers are advised to obtain verification from their solicitors and/or surveyors.

TUFFIN & WREN

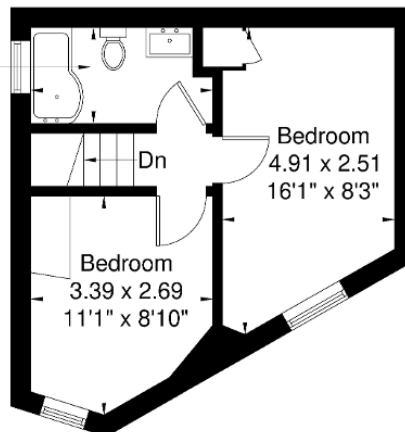
Independent Estate Agents

Loveday Road

Approximate Gross Internal Area = 52.8 sq m / 568 sq ft

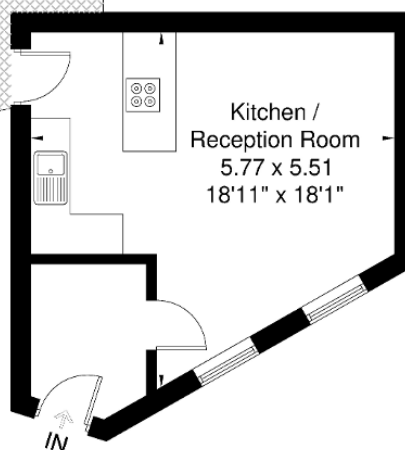
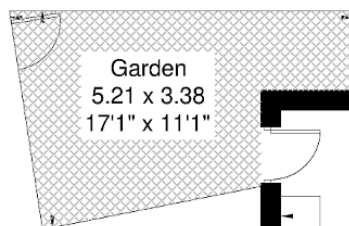


Bathroom
2.67 x 1.46
8'9" x 4'9"



First Floor

26.3 sq m / 283 sq ft



Ground Floor

26.5 sq m / 285 sq ft

Although every attempt has been made to ensure accuracy, all measurements are approximate.

The floorplan is for illustrative purposes only and not to scale.

© www.perspective.co.uk

Energy Efficiency Rating

Score	Energy rating	Current	Potential
92+	A		
81-91	B		
69-80	C		
55-68	D	63 D	69 C
39-54	E		
21-38	F		
1-20	G		