



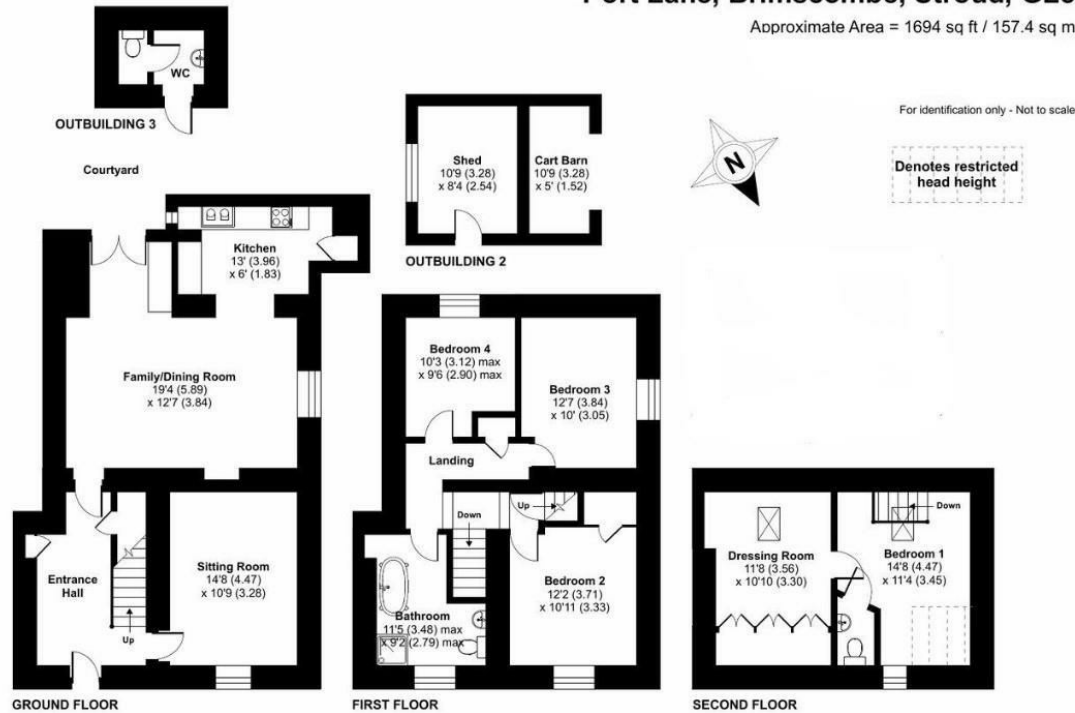
1 Terrace House Port Lane, Brimscombe, GL5 2QJ

£2,000 Per Month

- Period Grade II listed property
- Spread over three floors
- Council tax band: D
- Gas central heating
- Four bedrooms
- Spacious rooms
- Minimum tenancy 6 months
- Beautifully presented garden
- Popular location, close to local amenities
- EPC rating E54

Port Lane, Brimscombe, Stroud, GL5

Approximate Area = 1694 sq ft / 157.4 sq m



RICS Certified Property Measurer Floor plan produced in accordance with RICS Property Measurement Standards incorporating International Property Measurement Standards (IPMS2 Residential). ©richecom 2023. Produced for Peter Joy Estate Agents. REF: 1067895



Directions

Viewings

Viewings by arrangement only. Call 01453 833847 to make an appointment.

Council Tax Band

D

EPC Rating:

E

Energy Efficiency Rating		Current	Potential
Very energy efficient - lower running costs			
(92 plus)	A		84
(81-91)	B		
(69-80)	C		
(55-68)	D	54	
(39-54)	E		
(21-38)	F		
(1-20)	G		
Not energy efficient - higher running costs			
England & Wales		EU Directive 2002/91/EC	