



SAMUEL WOOD

201 Godiva Road, Leominster, Herefordshire, HR6 8TB

£850 PCM



201 Godiva Road

Leominster, Herefordshire, HR6 8TB



This 2 bedroom end terraced house sits in a popular residential area in a tucked away position, benefiting from upvc double glazing and gas fired heating. Accommodation includes: Entrance Hall, Kitchen / Dining Room, Living Room, Conservatory, First Floor Landing with 2 Bedrooms, En-suite Shower Room and House Bathroom. Outside the property sits on a corner garden and has designated parking.



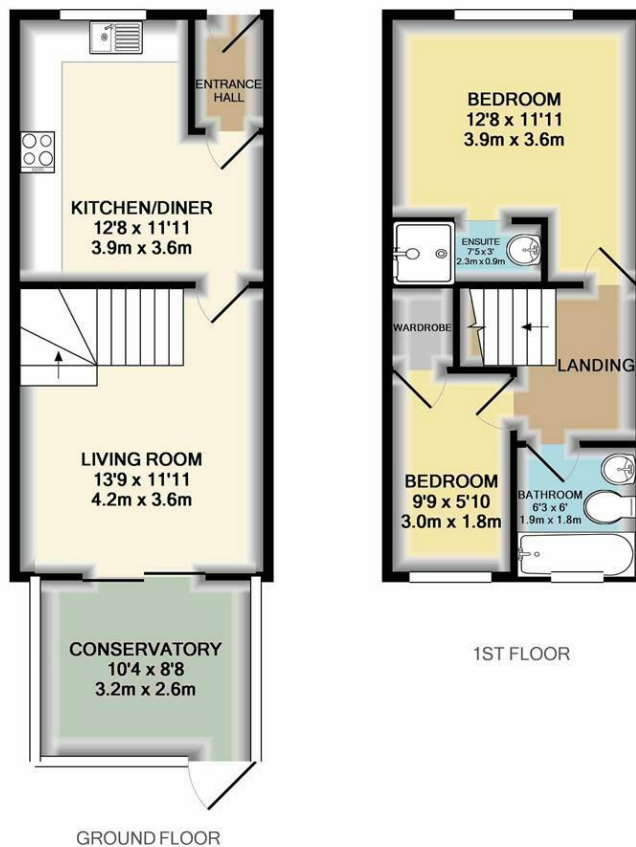




Directions







Whilst every attempt has been made to ensure the accuracy of the floor plan contained here, measurements of doors, windows, rooms and any other items are approximate and no responsibility is taken for any error, omission, or mis-statement. This plan is for illustrative purposes only and should be used as such by any prospective purchaser. The services, systems and appliances shown have not been tested and no guarantee as to their operability or efficiency can be given.
Made with Metropix ©2017

We take every care in preparing our sales details. They are checked and usually verified by the Vendor. We do not guarantee appliances, alarms, electrical fittings, plumbing, showers etc. You must satisfy yourself that they operate correctly. Room sizes are approximate; they are usually taken in metric and converted to imperial. Do not use them to buy carpets or furniture. We cannot verify the tenure, as we do not have access to the legal title; we cannot guarantee boundaries or rights of way so you must take the advice of your legal representative. No person in the employment of or representing Samuel Wood has any authority to make any representation or warranty whatever in relation to this property. If there is any point which is of particular importance to you, please contact the office and we will be pleased to check the information. Do so particularly if contemplating travelling some distance to view. Applicants are advised that the majority of our shots are taken with a wide angle lens.

CONTEMPORARY AGENCY • TRADITIONAL VALUES
2 Shoplatch, Shrewsbury, Shropshire, SY1 1HF
Tel: 01743 272710 | shrewsbury@samuelwood.co.uk