



SAMUEL WOOD

10 Burlington Place, Shrewsbury, Shropshire, SY3 7LF

Asking Price £174,999





🛏️ 2 🛁 1 🛋️ 1 🚪 B

Samuel Wood is delighted to offer for sale this well presented two bedroom apartment, situated in the highly sought after location of Belle Vue on Burlington Place, only a short walk into the town centre. The first floor property boasts a well designed layout, with an open plan living kitchen space, useful bathroom and generously sized bedrooms. A designated parking space in the residents car park complemented by additional visitor parking makes this an attractive proposition for any prospective buyer. Viewing is highly recommended by the selling agent.

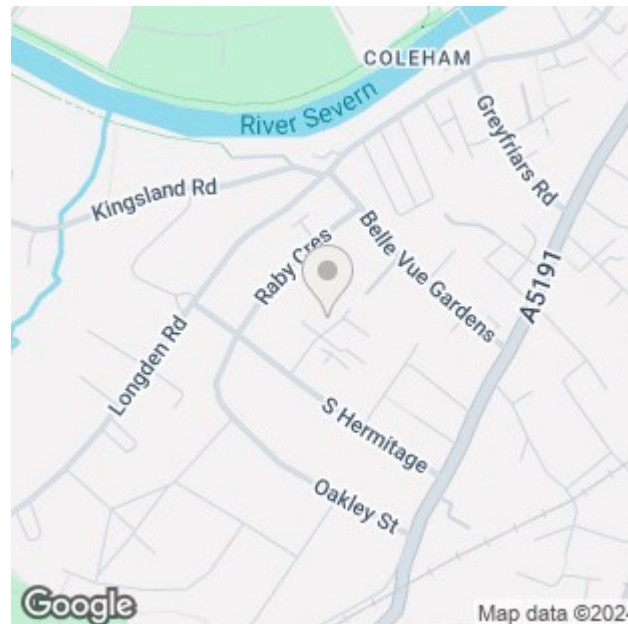


- Well Presented Two Bedroom Apartment
- Sought After Location
- Open Plan Layout
- Two Generous Sized Bedrooms
- Family Bathroom
- Ample Storage
- Allocated Parking Space
- Close to Local Amenities
- Gas Central Heating
- EPC Rating B

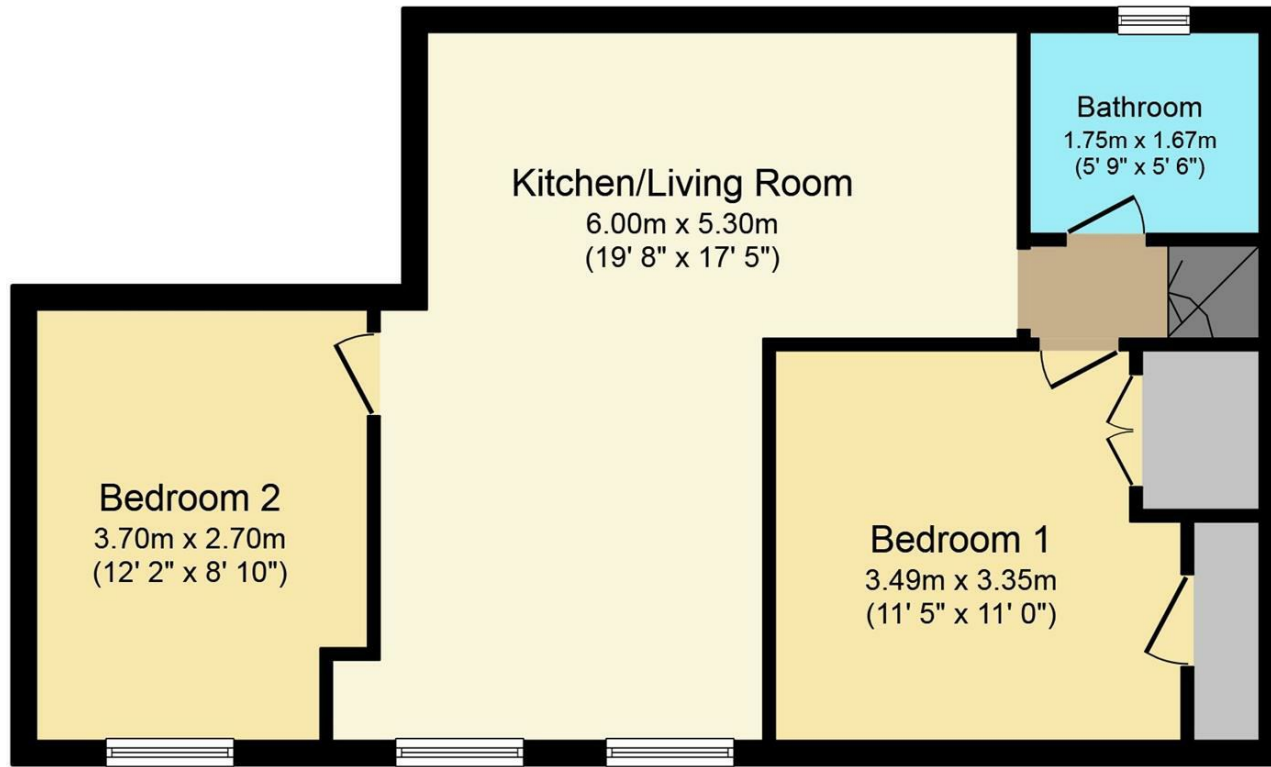
10 Burlington Place in Belle Vue, Shrewsbury, presents an enticing opportunity with its first-floor, two-bedroom apartment. This property boasts a modern and open-concept design, featuring an inviting living, dining, and kitchen space seamlessly integrated into one. The open-plan layout not only promotes a sense of spaciousness but also facilitates effortless entertaining and day-to-day living. The apartment's thoughtful design extends to its practicality, with an allocated parking space and additional visitor parking, making it convenient for residents and their guests.

This property's location is a key highlight, situated in the highly sought-after area of Belle Vue in Shrewsbury. Belle Vue is renowned for its charm and accessibility, making it a prime choice for homeowners. Residents of 10 Burlington Place can enjoy the tranquility of suburban living while being just a stone's throw away from the vibrant heart of Shrewsbury. This convenient proximity means that essential amenities, restaurants, shopping, and cultural attractions are all within easy reach, enhancing the quality of life for those lucky enough to call this apartment home.

In summary, 10 Burlington Place offers a well-designed, first-floor two-bedroom apartment that excels in modern living. Its open-plan layout, allocated parking, visitor parking, and prime location in Belle Vue, Shrewsbury, combine to create an appealing residential package. Whether you seek a comfortable retreat or a stylish urban lifestyle, this property's versatility and coveted location make it a standout choice in the local real estate market.



## Floor Plans



### Floor Plan

This Floor Plan is for illustration purposes only and may not be representative of the property. The position and size of doors, windows and other features are approximate. Unauthorized reproduction prohibited. © PropertyBOX

We take every care in preparing our sales details. They are checked and usually verified by the Vendor. We do not guarantee appliances, alarms, electrical fittings, plumbing, showers etc. You must satisfy yourself that they operate correctly. Room sizes are approximate; they are usually taken in metric and converted to imperial. Do not use them to buy carpets or furniture. We cannot verify the tenure, as we do not have access to the legal title; we cannot guarantee boundaries or rights of way so you must take the advice of your legal representative. No person in the employment of or representing Samuel Wood has any authority to make any representation or warranty whatever in relation to this property. If there is any point which is of particular importance to you, please contact the office and we will be pleased to check the information. Do so particularly if contemplating travelling some distance to view. Applicants are advised that the majority of our shots are taken with a wide angle lens.

CONTEMPORARY AGENCY • TRADITIONAL VALUES

2 Shoplatch, Shrewsbury, Shropshire, SY1 1HF  
Tel: 01743 272710 | shrewsbury@samuelwood.co.uk