



SAMUEL WOOD



, 10 Burlington Place

Belle vue, Shrewsbury, Shropshire, SY3 7LF

£800 Per Month



NO MORE VIEWINGS CURRENTLY. MANAGED BY SAMUEL WOOD. A well presented first-floor two bedroom apartment, situated in the highly sought after location of Belle Vue on Burlington Place, only a short walk into the town centre.



CONTEMPORARY AGENCY • TRADITIONAL VALUES

propertymark

MAYFAIR
OFFICE.CO.UK

rightmove

OnTheMarket.com

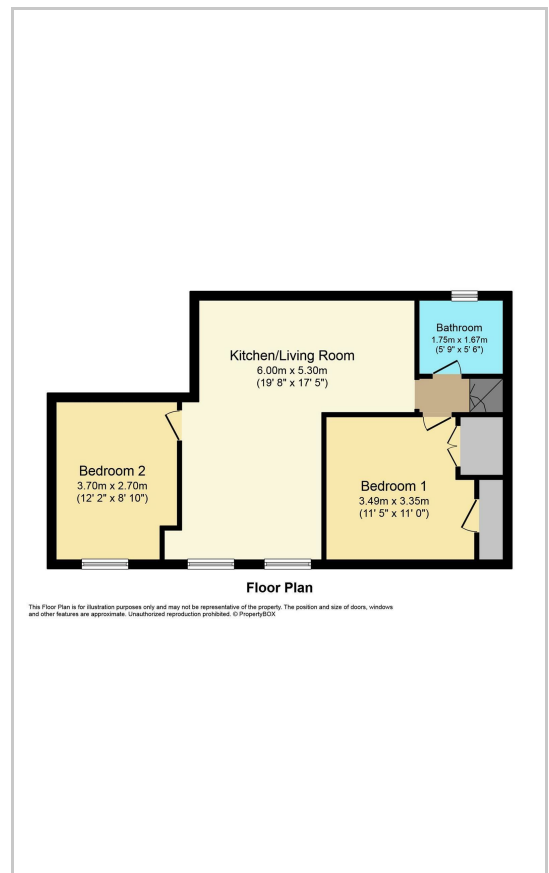


This property boasts a modern and open-concept design, featuring an inviting living, dining, and kitchen space seamlessly integrated into one with an allocated parking space and additional visitor parking, making it convenient for residents and their guests.

Area Map



Floor Plans



We take every care in preparing our sales details. They are checked and usually verified by the Vendor. We do not guarantee appliances, alarms, electrical fittings, plumbing, showers etc. You must satisfy yourself that they operate correctly. Room sizes are approximate; they are usually taken in metric and converted to imperial. Do not use them to buy carpets or furniture. We cannot verify the tenure, as we do not have access to the legal title; we cannot guarantee boundaries or rights of way so you must take the advice of your legal representative. No person in the employment of or representing Samuel Wood has any authority to make any representation or warranty whatever in relation to this property. If there is any point which is of particular importance to you, please contact the office and we will be pleased to check the information. Do so particularly if contemplating travelling some distance to view. Applicants are advised that the majority of our shots are taken with a wide angle lens.

2 Shoplatch, Shrewsbury, Shropshire, SY1 1HF
Tel: 01743 272710 | shrewsbury@samuelwood.co.uk

www.samuelwood.co.uk