



# SAMUEL WOOD



## , 4 Crewe Street

Shrewsbury, Shropshire, SY1 2HH

£950 Per Month



MANAGED BY SAMUEL WOOD. Newly deocarted family home, located on quiet side street and within walking distance to the town centre. Viewing highly recommended.



CONTEMPORARY AGENCY • TRADITIONAL VALUES

propertymark

MAYFAIR  
OFFICE.CO.UK

rightmove

onTheMarket.com



Property briefly comprises entrance hallway, living room with connected dining room, kitchen with built in gas hob, electric oven, space for upright fridge freezer and connections for washing machine. Kitchen also has door leading into the garden. Upstairs, three bedroom and a bathroom. The main bedroom is a good size double and there are further two single bedrooms (one comes with in built storage). The bathroom has a bath with electric shower.

Outside, enclosed back garden with paved patio area and garden shed. A pathway leads to gated access on to parking area at the back (please note, it is available on first come first served basis).

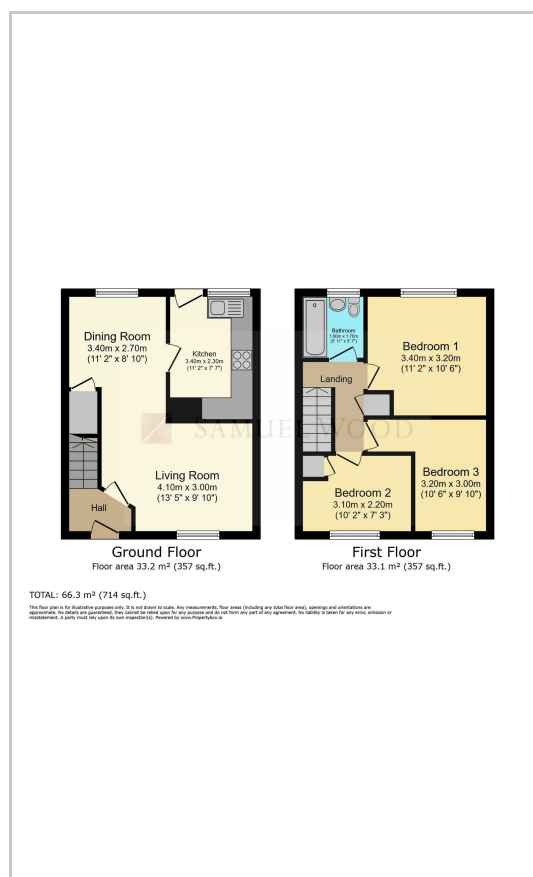
Situated on a quiet side street, this property is conveniently close to the town centre, with the train station just a 14-minute walk away according to Google Maps.

This property must be seen to be appreciated. It is very well presented and has been newly decorated with new flooring in the kitchen.

## Area Map



## Floor Plans



We take every care in preparing our sales details. They are checked and usually verified by the Vendor. We do not guarantee appliances, alarms, electrical fittings, plumbing, showers etc. You must satisfy yourself that they operate correctly. Room sizes are approximate; they are usually taken in metric and converted to imperial. Do not use them to buy carpets or furniture. We cannot verify the tenure, as we do not have access to the legal title; we cannot guarantee boundaries or rights of way so you must take the advice of your legal representative. No person in the employment of or representing Samuel Wood has any authority to make any representation or warranty whatever in relation to this property. If there is any point which is of particular importance to you, please contact the office and we will be pleased to check the information. Do so particularly if contemplating travelling some distance to view. Applicants are advised that the majority of our shots are taken with a wide angle lens.

2 Shoplatch, Shrewsbury, Shropshire, SY1 1HF  
Tel: 01743 272710 | shrewsbury@samuelwood.co.uk

[www.samuelwood.co.uk](http://www.samuelwood.co.uk)