



SAMUEL WOOD

Flat 3, Avalon St Julian's Avenue, Ludlow, Shropshire, SY8 1ET

£650 Per Month



# Flat 3, Avalon St Julian's Avenue

Ludlow, Shropshire, SY8 1ET



MANAGED BY SAMUEL WOOD. This is one of three apartments in this detached property. Located on the second floor this is larger than average apartment with separate kitchen and living room.

Located just off the historic town centre lies this attractive detached residence which has been converted into three apartments. Flat 3 is located on the second floor and has accommodation which benefits from gas fired heating to include landing, large lounge/diner, modern kitchen, Large bedroom and shower room. Outside there is a designated parking.







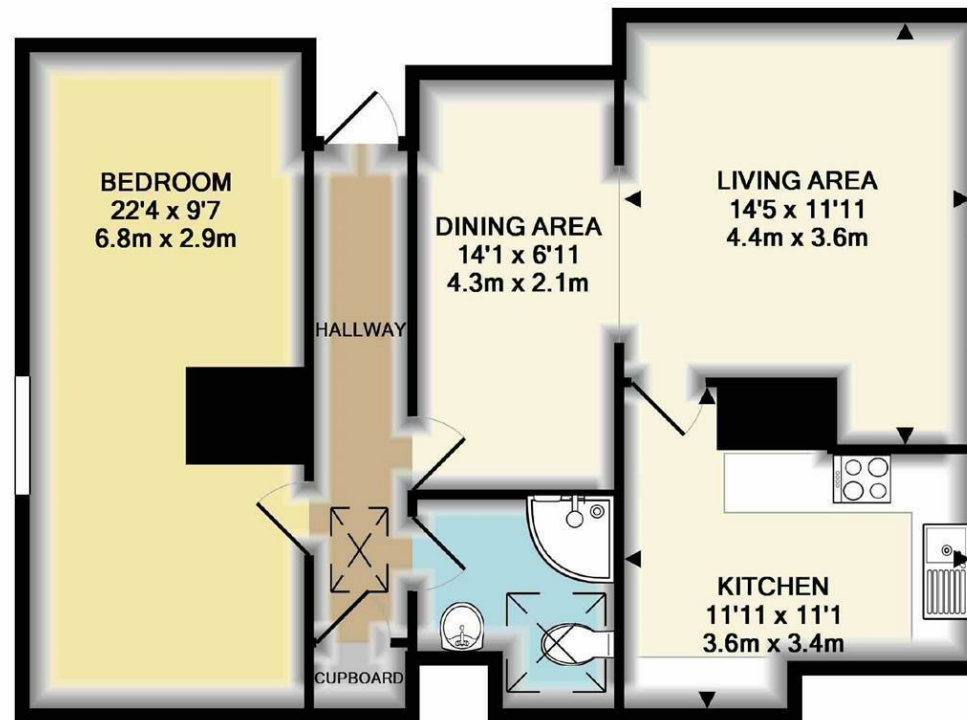
## Directions

Available on a min 12 months tenancy  
Unfurnished.  
No smoking/vaping.  
No Pets.  
EPC - D  
Council Tax Band – A  
Utilities mains gas, mains electric, mains water; mains drainage  
Parking situation – allocated parking for one car









TOTAL APPROX. FLOOR AREA 667 SQ.FT. (62.0 SQ.M.)

Whilst every attempt has been made to ensure the accuracy of the floor plan contained here, measurements of doors, windows, rooms and any other items are approximate and no responsibility is taken for any error, omission, or mis-statement. This plan is for illustrative purposes only and should be used as such by any prospective purchaser. The services, systems and appliances shown have not been tested and no guarantee as to their operability or efficiency can be given  
Made with Metropix ©2017

We take every care in preparing our sales details. They are checked and usually verified by the Vendor. We do not guarantee appliances, alarms, electrical fittings, plumbing, showers etc. You must satisfy yourself that they operate correctly. Room sizes are approximate; they are usually taken in metric and converted to imperial. Do not use them to buy carpets or furniture. We cannot verify the tenure, as we do not have access to the legal title; we cannot guarantee boundaries or rights of way so you must take the advice of your legal representative. No person in the employment of or representing Samuel Wood has any authority to make any representation or warranty whatever in relation to this property. If there is any point which is of particular importance to you, please contact the office and we will be pleased to check the information. Do so particularly if contemplating travelling some distance to view. Applicants are advised that the majority of our shots are taken with a wide angle lens.

CONTEMPORARY AGENCY • TRADITIONAL VALUES  
2 Shoplatch, Shrewsbury, Shropshire, SY1 1HF  
Tel: 01743 272710 | shrewsbury@samuelwood.co.uk