



SAMUEL WOOD

14 Lloyd Way, Ludlow, Shropshire, SY8 1FA

£1,000 Per Month



14 Lloyd Way

Ludlow, Shropshire, SY8 1FA



MANAGED BY SAMUEL WOOD. A modern property on a pleasant development of similar houses on the outskirts of Ludlow. Driveway, electric charging point, front and back garden.

This 3 bedroom semi-detached house sits on a newly built development on the Eastern outskirts of Ludlow town, with beautiful open countryside close at hand. The home is easily accessible back into Ludlow historic town centre.

This a spacious modern home briefly comprising hallway, downstairs toilet, living room with bay window, kitchen / dining room, first floor with 3 bedrooms, family bathroom and en suit shower. There are two double bedrooms and one good size single - master bedroom comes with en suit shower and the second double bedroom comes with built in storage. Bathroom has a bath with over the bath shower.

Outside the property enjoys driveway parking with electric charge point and gardens to both front and rear.





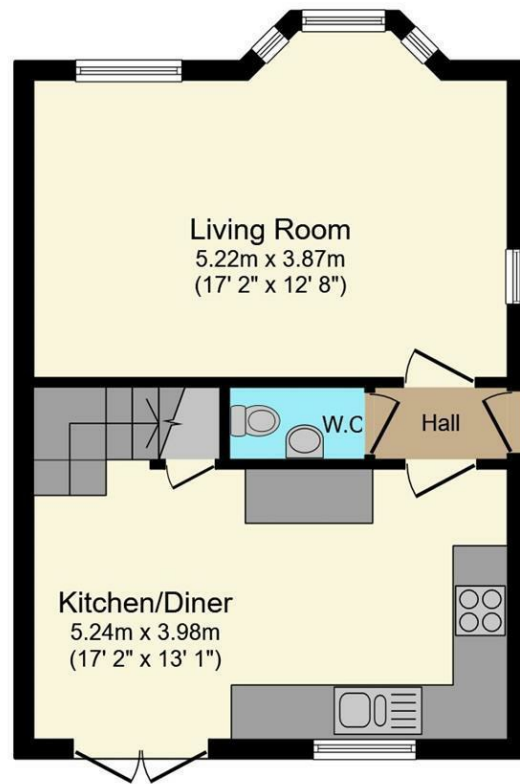


Directions

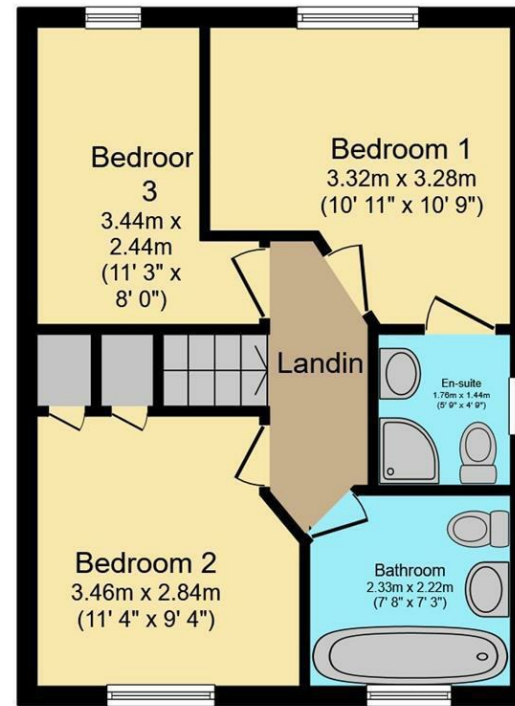
Available on a min 12 months tenancy
Unfurnished.
No smoking/vaping.
No Pets.
EPC - B
Council Tax Band – C
Utilities mains gas, mains electric, mains water, mains drainage
Parking situation - off road parking for 2 vehicles







Ground Floor



First Floor

For Plan is for illustration purposes only and may not be representative of the property. The position and size of doors, windows and other features are approximate. Unauthorized reproduction prohibited. © PropertyBOX

We take every care in preparing our sales details. They are checked and usually verified by the Vendor. We do not guarantee appliances, alarms, electrical fittings, plumbing, showers etc. You must satisfy yourself that they operate correctly. Room sizes are approximate; they are usually taken in metric and converted to imperial. Do not use them to buy carpets or furniture. We cannot verify the tenure, as we do not have access to the legal title; we cannot guarantee boundaries or rights of way so you must take the advice of your legal representative. No person in the employment of or representing Samuel Wood has any authority to make any representation or warranty whatever in relation to this property. If there is any point which is of particular importance to you, please contact the office and we will be pleased to check the information. Do so particularly if contemplating travelling some distance to view. Applicants are advised that the majority of our shots are taken with a wide angle lens.

CONTEMPORARY AGENCY • TRADITIONAL VALUES

2 Shoplatch, Shrewsbury, Shropshire, SY1 1HF

Tel: 01743 272710 | shrewsbury@samuelwood.co.uk