



SAMUEL WOOD

12 Catherton Close, Clee Hill, Nr Ludlow, Shropshire, SY8 3RD

£950 Per Month



12 Catherton Close

Clee Hill, Nr Ludlow, Shropshire, SY8 3RD



MANAGED BY SAMUEL WOOD. An attractive detached bungalow with conservatory on a cul de sac of similar properties. Bedrooms with built in wardrobes. PV panels for hot water.

A detached bungalow located on a cul de sac of similar properties in a well serviced South Shropshire village. Accommodation which benefits from modern electric heating system and energy efficient PV cells to heat the water, together with double glazing, briefly includes: spacious reception hall, living room with large kitchen area with fully integrated appliances, conservatory, 2 double bedrooms and shower room. Outside there are bricked driveways, oversized garage and landscaped garden.

Within approximately 50 metres , the property benefits from a pedestrian gated access onto the Clee Hill Common offering panoramic views and unlimited walks throughout the unspoilt Shropshire Countryside.







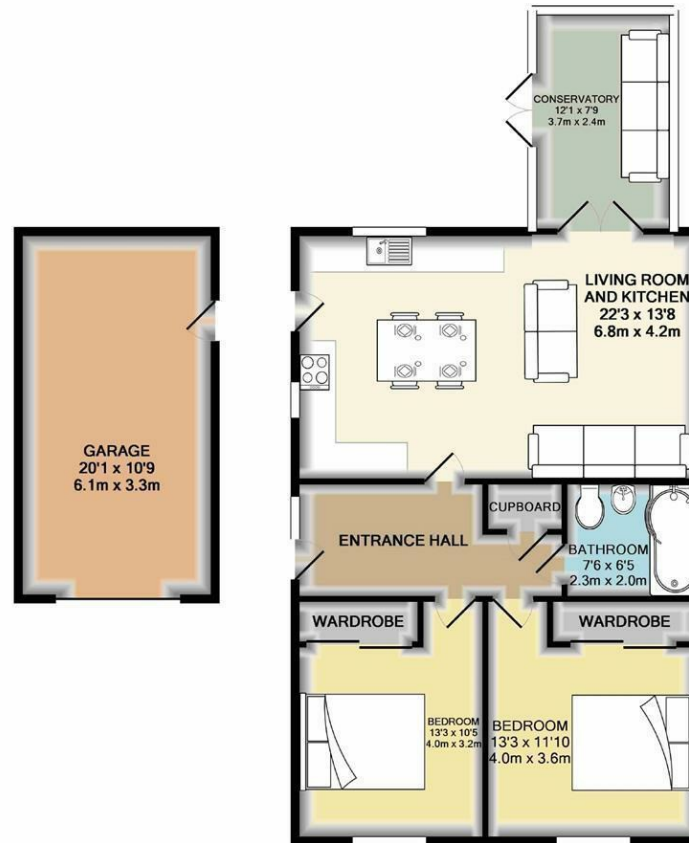
Directions

Available on a min 12 months tenancy.
Unfurnished.
No smoking/vaping.
Pets considered.
EPC - C
Council Tax Band – C
Utilities (mains electric, mains water, mains drainage)
Parking situation – garage, off road parking for 2 vehicles





Floor Plans



TOTAL APPROX. FLOOR AREA 1051 SQ.FT. (97.7 SQ.M.)

Whilst every attempt has been made to ensure the accuracy of the floor plan contained here, measurements of doors, windows, rooms and any other items are approximate and no responsibility is taken for any error, omission, or mis-statement. This plan is for illustrative purposes only and should be used as such by any prospective purchaser. The services, systems and appliances shown have not been tested and no guarantee as to their operability or efficiency can be given.
Made with Metropix ©2017

We take every care in preparing our sales details. They are checked and usually verified by the Vendor. We do not guarantee appliances, alarms, electrical fittings, plumbing, showers etc. You must satisfy yourself that they operate correctly. Room sizes are approximate; they are usually taken in metric and converted to imperial. Do not use them to buy carpets or furniture. We cannot verify the tenure, as we do not have access to the legal title; we cannot guarantee boundaries or rights of way so you must take the advice of your legal representative. No person in the employment of or representing Samuel Wood has any authority to make any representation or warranty whatever in relation to this property. If there is any point which is of particular importance to you, please contact the office and we will be pleased to check the information. Do so particularly if contemplating travelling some distance to view. Applicants are advised that the majority of our shots are taken with a wide angle lens.

CONTEMPORARY AGENCY • TRADITIONAL VALUES
2 Shoplatch, Shrewsbury, Shropshire, SY1 1HF
Tel: 01743 272710 | shrewsbury@samuelwood.co.uk