



Bramley Way, Ashted KT21 1RD



Your local property specialist

Bramley Way Ashted KT21 1RD

Surprisingly spacious four double-bedroom family home offering generous and versatile accommodation throughout. Ideally located within walking distance of Ashted station, the village and close to outstanding local schools including Rosebery Girls' School and The Greville Primary School.

No Onward Chain

Four Double Bedrooms

Three Reception Rooms

Kitchen/Breakfast Room

En Suite Bathroom

Family Bathroom

South West Facing Garden

Close To Outstanding Schools

Easy Reach Of Ashted Village

EPC Rating C





A porch and spacious entrance hall lead to three excellent reception rooms including the study. The lounge opens via french doors into the dining room, which in turn benefits from further patio doors leading directly to the garden, creating an excellent space for family living and entertaining.

The fitted kitchen features an attractive archway opening into a bright breakfast room.

The property features four excellent double bedrooms, a large en-suite bathroom to the principal bedroom and a well-proportioned family bathroom.

Outside, the property offers a south west facing low-maintenance garden with patio and lawn. To the front, there is a driveway providing parking for several vehicles.

Offered with no onward chain, the property is ready to move into and presents an excellent opportunity to enhance and personalise to your own taste.

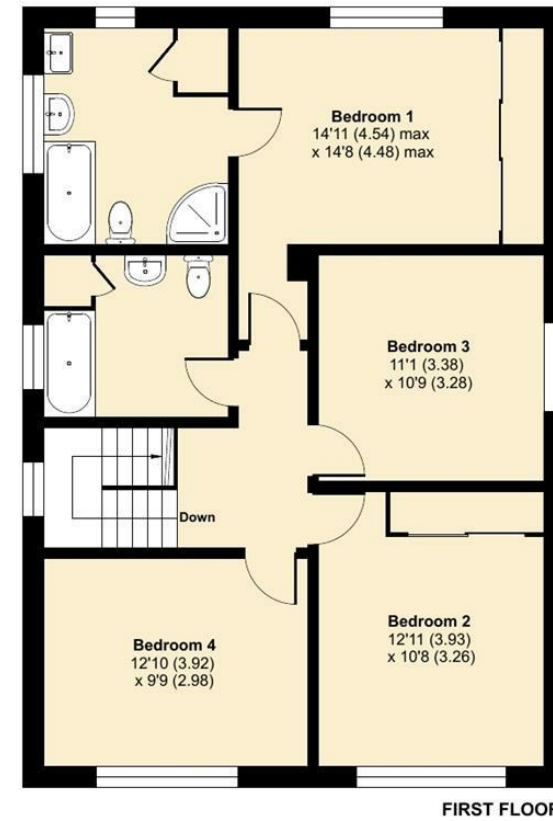
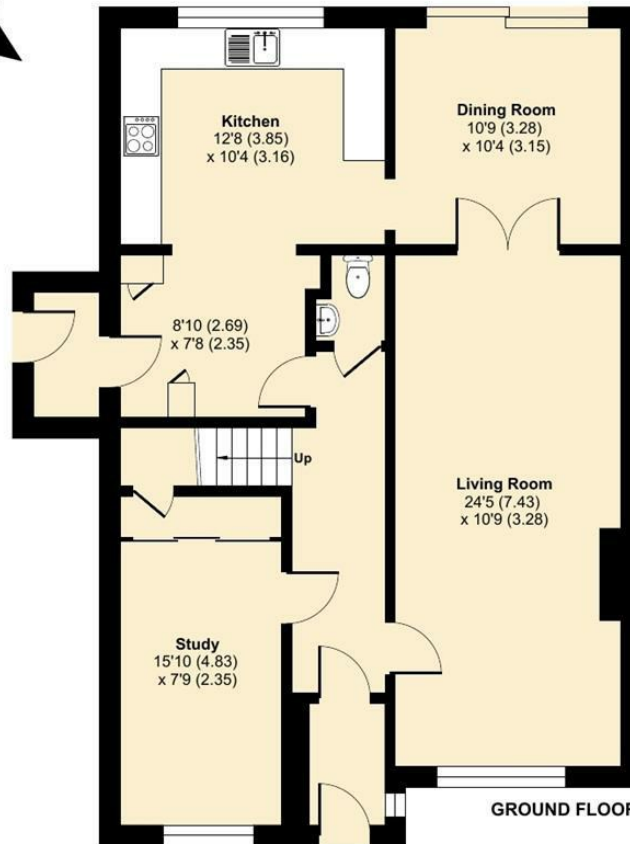


Bramley Way, Ashted, KT21

Approximate Area = 1743 sq ft / 161.9 sq m

Approx. Garden Length = 10.63 (Meters)

For identification only - Not to scale



Floor plan produced in accordance with RICS Property Measurement 2nd Edition, Incorporating International Property Measurement Standards (IPMS2 Residential). © n/checom 2026. Produced for V&H Homes. REF: 1401423

V&H Homes

01372 221 678

sales@vhhomes.co.uk

www.vhhomes.co.uk

rightmove

Zoopla

PrimeLocation.com

The Property Ombudsman

hometrack

V&H HOMES

Your local property specialist