



Westfield, Ashted KT21 1RH

**V&H**  
HOMES

Your local property specialist

**V&H**  
HOMES



Westfield  
Ashted KT21 1RH

Three Bedroom House

Two Reception Rooms

Kitchen/Breakfast Room

Bathroom and Shower Room

Rear Garden

Garage

EPC D

Council Tax Band E

Available End of July/Beginning August

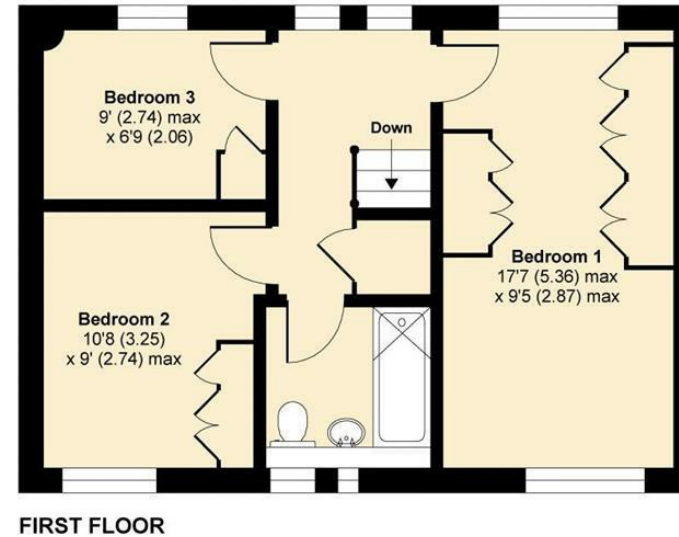
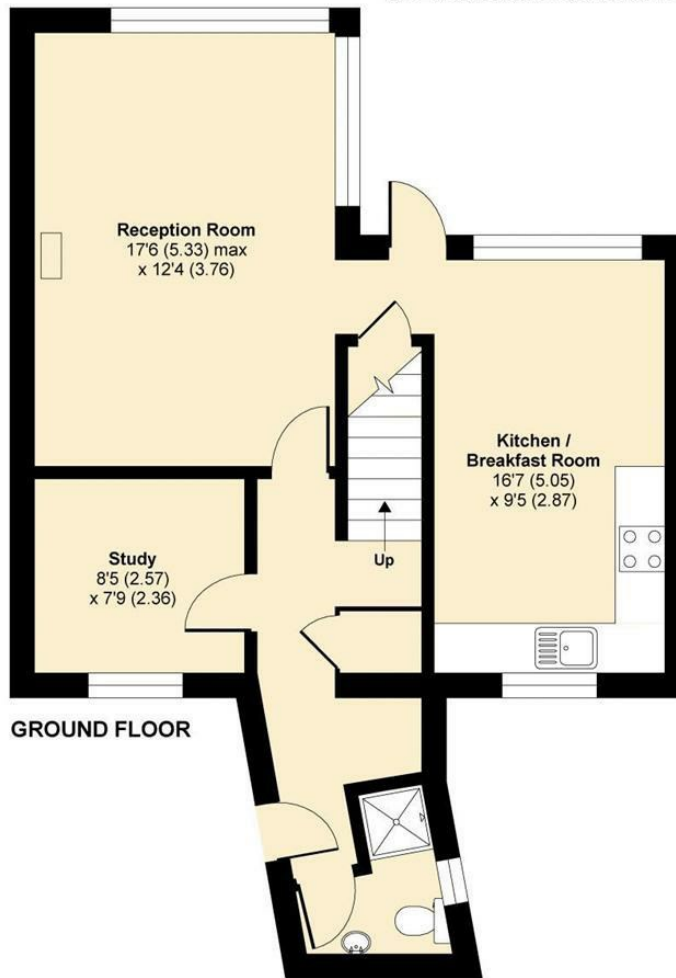






# Westfield, Ashted, KT21

APPROX. GROSS INTERNAL FLOOR AREA 1055 SQ FT 98 SQ METRES



Whilst every attempt has been made to ensure the accuracy of the floor plan contained here, measurements of doors, windows and rooms are approximate and no responsibility is taken for any error, omission or misstatement. These plans are for representation purposes only as defined by RICS Code of Measuring Practice and should be used as such by any prospective purchaser. Specifically no guarantee is given on the total square footage of the property if quoted on this plan. Any figure given is for initial guidance only and should not be relied on as a basis of valuation.

Copyright nichecom.co.uk 2017 Produced for V&H Homes REF : 156189

**V&H Homes**

01372 221 678

[sales@vhhomes.co.uk](mailto:sales@vhhomes.co.uk)

[www.vhhomes.co.uk](http://www.vhhomes.co.uk)

**rightmove**

**Zoopla**

**PrimeLocation.com**

**The Property Ombudsman**

**hometrack**

**V&H HOMES**

Your local property specialist