



Newton Wood Road, Ashted KT21 1NW

**V&H**  
HOMES

Your local property specialist



## Newton Wood Road Ashted KT21 1NW

*Located on Newton Wood Road in the charming village of Ashted, this impressive semi-detached house offers a splendid opportunity for families seeking a spacious and versatile home. Boasting five well-proportioned bedrooms, this extended property is perfect for those who value both comfort and space. The opportunity to enable new owners to put their personal stamp on this property is a definite bonus.*

Location, Location, Location

Extended Property

5 Bedrooms

Large Walk in Shower and Separate Bath

Backing Woodland

Off Street Parking

Larger Than Average Garden

Excellent Catchment for Outstanding  
Schools

Amazing Potential

EPC Rating: D







The location is particularly advantageous, as it lies within the catchment for some of the most sought-after schools in the region. This makes it an ideal choice for families prioritising education and community.

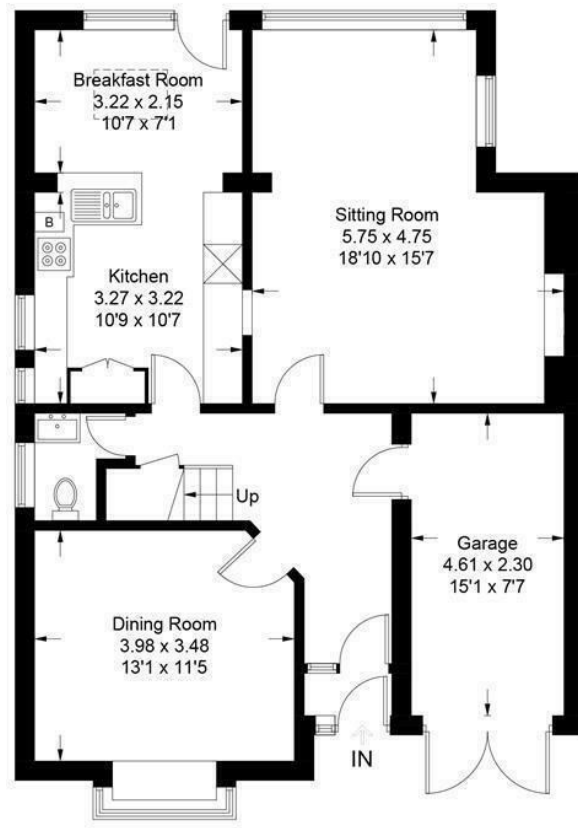
With its superb position and fantastic potential, this property represents a remarkable opportunity for those looking to settle in a tranquil yet vibrant area. Whether you are looking to expand your family or simply desire more space, this home on Newton Wood Road is sure to meet your needs and exceed your expectations.



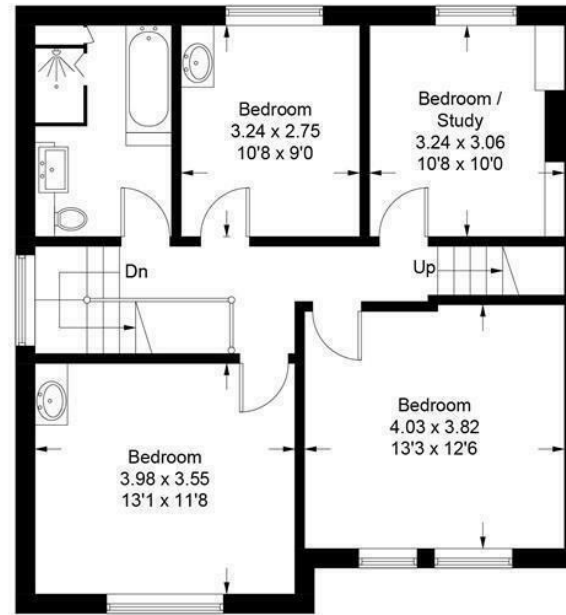
Approximate Gross Internal Area = 176.4 sq m / 1899 sq ft  
(Including Garage)



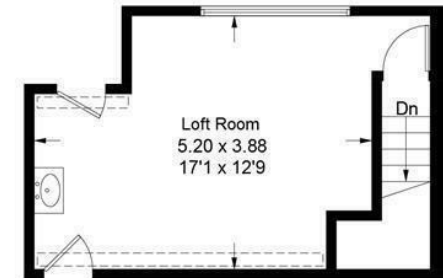
 = Reduced headroom below 1.5m / 5'0



**Ground Floor**



**First Floor**



**Second Floor**

This plan is for layout guidance only. Not drawn to scale unless stated. Windows and door openings are approximate. Whilst every care is taken in the preparation of this plan, please check all dimensions, shapes and compass bearings before making decisions reliant upon them. (ID1174745)

**V&H Homes**

01372 221 678

[sales@vhhomes.co.uk](mailto:sales@vhhomes.co.uk)

[www.vhhomes.co.uk](http://www.vhhomes.co.uk)

**rightmove** 

**Zoopla**

 **PrimeLocation.com**

 **The Property Ombudsman**

  
**hometrack**

**V&H**  
**HOMES**

Your local property specialist