



Leatherhead Road, Ashted KT21 2TP

V&H
HOMES

Your local property specialist

Leatherhead Road
Ashted KT21 2TP

*An opportunity to purchase an
immaculate ground-floor one-bedroom
retirement apartment with direct access
to a patio and the beautifully maintained
communal gardens.*

Ground floor retirement apartment

Direct patio & garden access

24-hour support

Close to amenities

High specification

Service charge includes heating & water bills

On site parking

EPC Rating: B





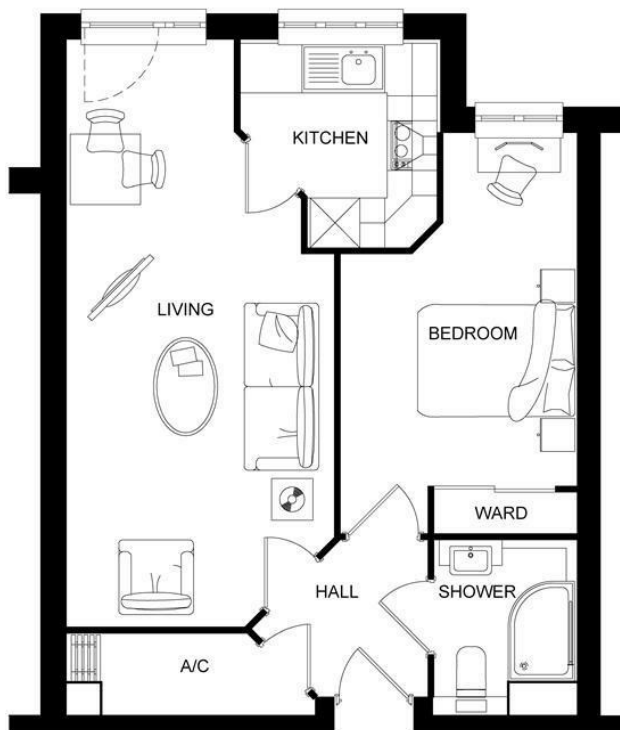
Located in the highly regarded Headley Lodge, exclusively for the over-60s, this well-presented and spacious apartment features a modern kitchen with integrated appliances, a bright living/dining room with a feature fireplace, and a generous double bedroom. The stylish shower room completes the accommodation.

Residents benefit from excellent on-site facilities, including a charming communal garden, a beautifully designed owners' lounge with a coffee bar, a guest suite, and ample resident and visitor parking. The development is also equipped with Sky Q TV service and a security camera at the main entrance.

Additional features include a 24-hour emergency helpline and an on-site lodge manager for peace of mind. Heating and hot water costs are included in the service charge.

Ashted High Street is just a short, level walk away, providing easy access to shops, cafés, and essential amenities.





V&H Homes

01372 221 678

sales@vhhomes.co.uk

www.vhhomes.co.uk

rightmove

Zoopla

PrimeLocation.com



hometrack

V&H
HOMES

Your local property specialist