



Tithe Barn Close, Kingston Upon Thames KT2 6RZ

**V&H**  
HOMES

Your local property specialist

## Tithe Barn Close Kingston Upon Thames KT2 6RZ

*A spacious four bedroom town house over three floors with off street parking and a paved rear garden. Offered for sale with NO CHAIN.*

*Tithe Barn Close is a quiet residential road centrally located for Kingston Town Centre and mainline railway station.*

Four Bedroom Town House

Central Kingston Location

Three/Four Bedrooms

Off Street Parking & Estate Permits Available

Paved Rear Garden

Fitted Kitchen

Family Bathroom

No Chain

Approximately 500 yards to Station

EPC Rating D





The current layout has a large fitted kitchen and a reception room/bedroom on the ground floor, a lounge and bedroom plus a family bathroom on the first floor and a further two double bedrooms and a wc on the second floor. All rooms are spacious and offer a flexible layout for multi generational families.

There is off street parking for one vehicle to the front of the property and a paved garden with a rear access gate.

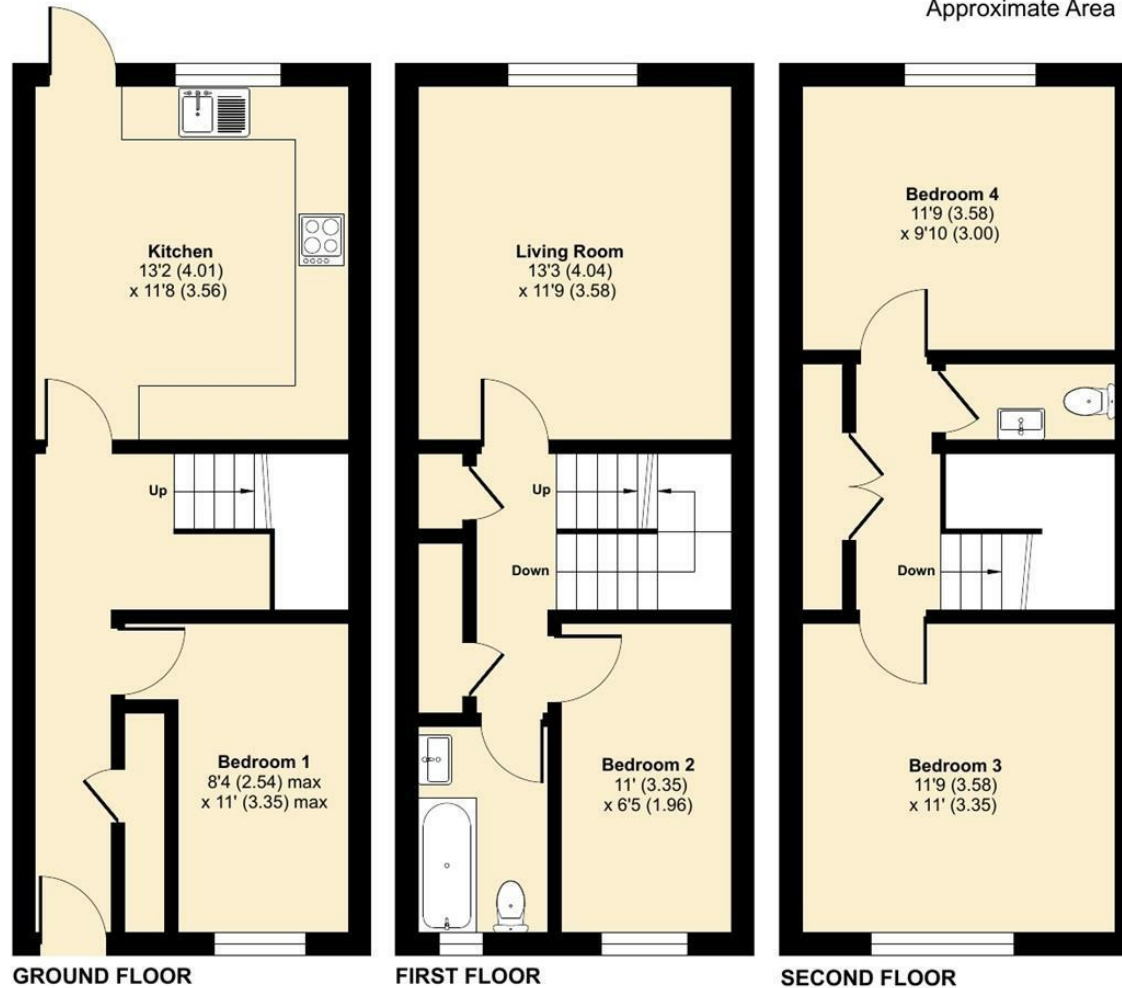
Title Barn Close is a quiet residential road and is located perfectly to enjoy everything Kingston has to offer with the town centre and Kingston Train Station both just over 500 yards away.



# Tithe Barn Close, Kingston Upon Thames, KT2

Approximate Area = 1104 sq ft / 102.5 sq m

For identification only - Not to scale



Floor plan produced in accordance with RICS Property Measurement Standards incorporating International Property Measurement Standards (IPMS2 Residential). © nchecon 2024. Produced for V&H Homes. REF: 1194543



**V&H Homes**

01372 221 678

[sales@vhomes.co.uk](mailto:sales@vhomes.co.uk)

[www.vhomes.co.uk](http://www.vhomes.co.uk)

