



Gladstone Road, Ashted KT21 2NS

**V&H**  
HOMES

Your local property specialist

## Gladstone Road Ashted KT21 2NS

*A beautifully extended and renovated four bedroom cottage situated in a quiet cul-de-sac location in the highly sought after "Lanes" area of Ashted.*

Mid Terraced Sympathetically Renovated  
Cottage

Extended Kitchen/Family Room

Contemporary Finish Throughout

Four Bedrooms

En Suite To Master Bedroom

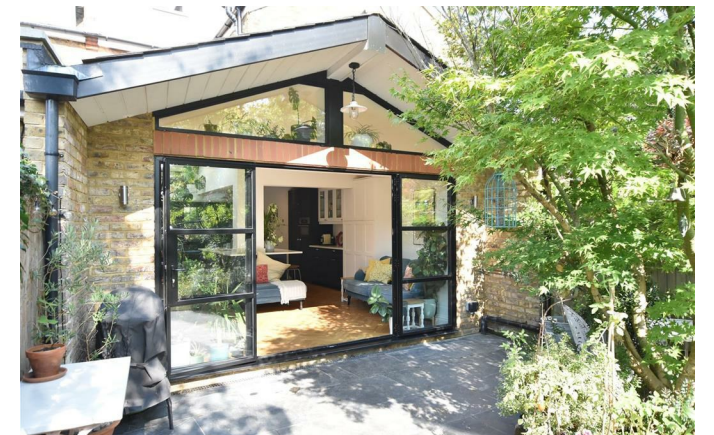
Top Floor Study

South Facing Garden

Sought After Location

0.7 Miles to Ashted Station

EPC Rating C





On entering the house, a welcoming hall leads into a bright, spacious double-length living/dining room. Sliding double doors lead through to a fabulous 21 foot kitchen/family room with double doors and a striking gable window to the rear garden. The contemporary, well equipped kitchen/family room has a central island with breakfast bar, and an array of fitted units and appliances. There is also a modern cloakroom downstairs.

The first floor landing leads to two good sized double bedrooms and a smaller single bedroom which are all served by a spacious family bathroom. Stairs lead up to a large master bedroom with an ensuite bathroom with laundry area and a study area to the front.

The charming south facing rear garden benefits from rear access and has a patio ideal for al fresco dining. The property is located close to Ashted Village and is convenient for outstanding local schools, amenities and the station.



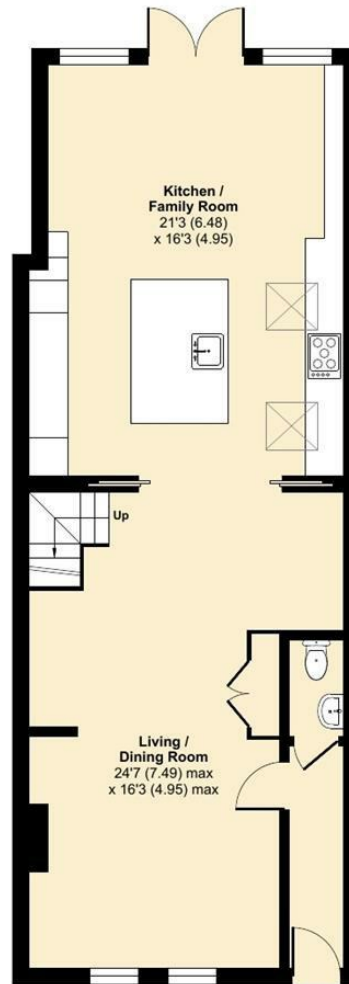
# Gladstone Road, Ashted, KT21

Approximate Area = 1653 sq ft / 153.5 sq m

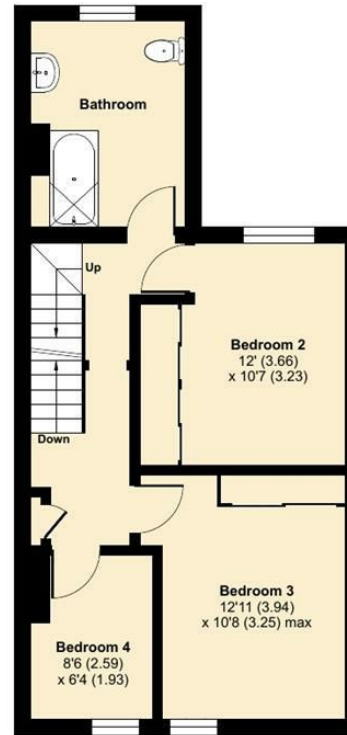
Limited Use Area(s) = 68 sq ft / 6.3 sq m

Total = 1721 sq ft / 159.8 sq m

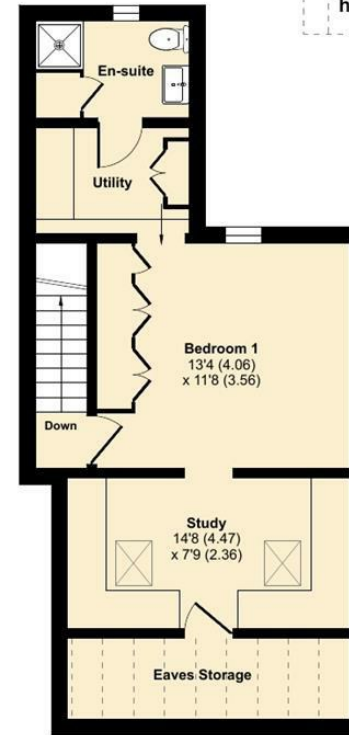
For identification only - Not to scale



GROUND FLOOR



FIRST FLOOR



SECOND FLOOR

Denotes restricted head height



V&H Homes

01372 221 678

sales@vhhomes.co.uk

www.vhhomes.co.uk



Your local property specialist