



Gladstone Road, Ashted KT21 2NS

V&H
HOMES

Your local property specialist

Gladstone Road Ashted KT21 2NS

A beautifully extended and renovated four bedroom cottage situated in a quiet cul-de-sac location in the highly sought after "Lanes" area of Ashted.

Mid Terraced Sympathetically Renovated
Cottage

Extended Kitchen/Family Room

Contemporary Finish Throughout

Four Bedrooms

En Suite To Master Bedroom

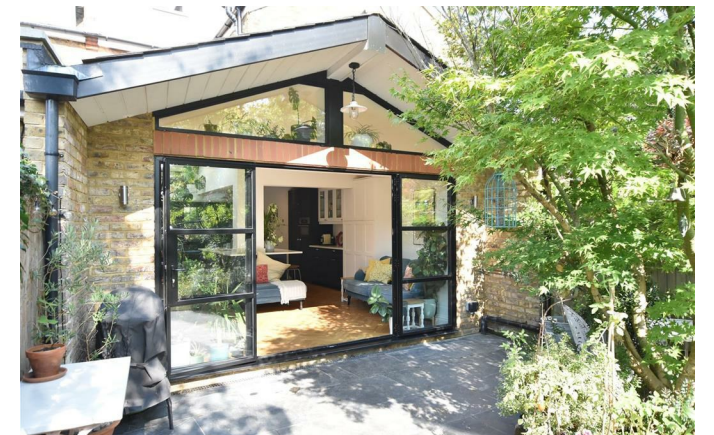
Top Floor Study

South Facing Garden

Sought After Location

0.7 Miles to Ashted Station

EPC Rating C





On entering the house, a welcoming hall leads into a bright, spacious double-length living/dining room. Sliding double doors lead through to a fabulous 21 foot kitchen/family room with double doors and a striking gable window to the rear garden. The contemporary, well equipped kitchen/family room has a central island with breakfast bar, and an array of fitted units and appliances. There is also a modern cloakroom downstairs.

The first floor landing leads to two good sized double bedrooms and a smaller single bedroom which are all served by a spacious family bathroom. Stairs lead up to a large master bedroom with an ensuite bathroom with laundry area and a study area to the front.

The charming south facing rear garden benefits from rear access and has a patio ideal for al fresco dining. The property is located close to Ashted Village and is convenient for outstanding local schools, amenities and the station.



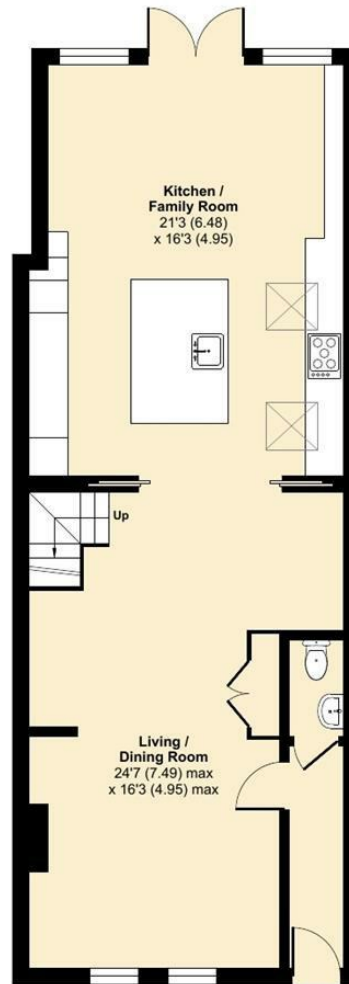
Gladstone Road, Ashted, KT21

Approximate Area = 1653 sq ft / 153.5 sq m

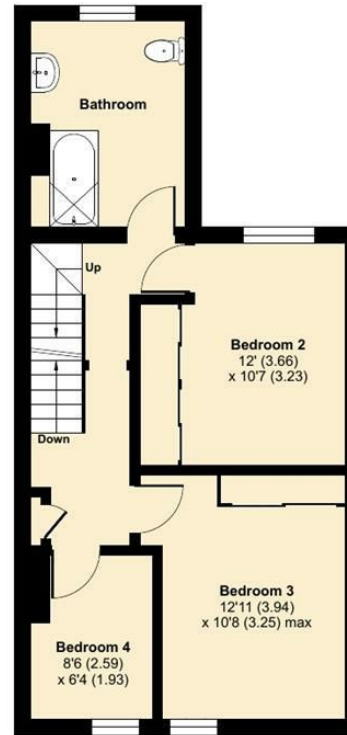
Limited Use Area(s) = 68 sq ft / 6.3 sq m

Total = 1721 sq ft / 159.8 sq m

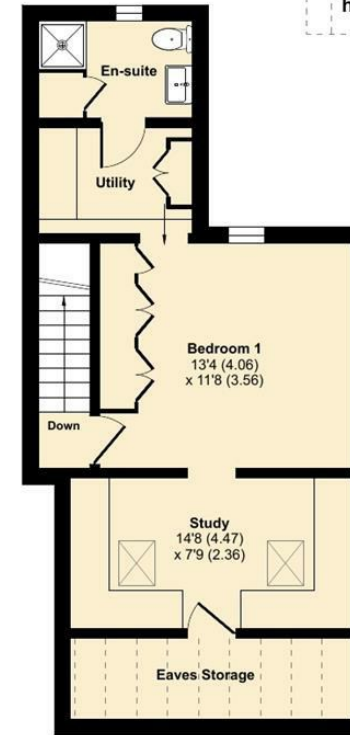
For identification only - Not to scale



GROUND FLOOR



FIRST FLOOR



SECOND FLOOR

Denotes restricted head height



V&H Homes

01372 221 678

sales@vhhomes.co.uk

www.vhhomes.co.uk



Your local property specialist