



Pound Court, Ashted KT21 1RN

V&H
HOMES

Your local property specialist

Pound Court Ashted KT21 1RN

An attractive Georgian style two double bedrooomed mid terrace home, located in a quiet cul-de-sac on the doorstep of Ashted Village, enjoying a southerly aspect rear garden.

Mid Terrace House

Two Double Bedrooms

Spacious Lounge/Dining Room

Conservatory

Chain Free

Southerly Aspect Rear Garden

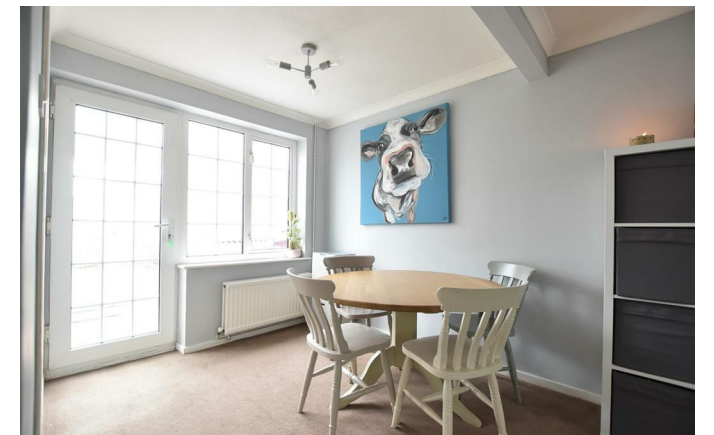
Ashted Village Location

Cul-de-sac

Garage and Parking

EPC Rating C

This quiet location offers the ultimate in convenience, being so close to Ashted shops yet still only 0.7 of mile from Ashted Station and Ashted Common.





This well presented home offers a dual aspect lounge-dining room with a delightful bay window, a feature fireplace and a useful under stairs cupboard. In addition, there is a modern kitchen with an array of fitted units and a bright conservatory stretching across the back of the house.

On the first floor there are two well-proportioned double bedrooms each with a fitted wardrobe and a family bathroom.

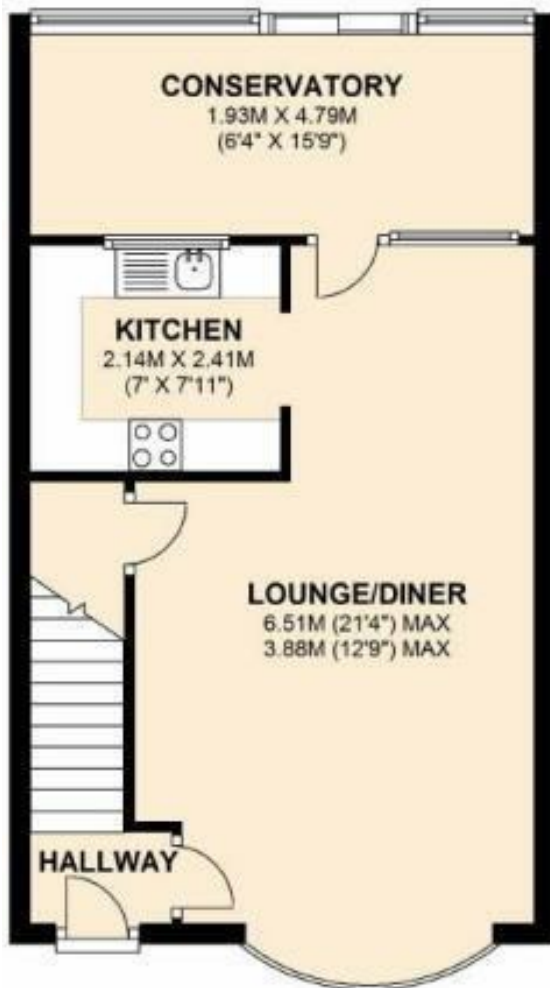
Externally there is wonderful sunny private rear garden with a paved patio, shed and rear wooden gate.

To the front of the home there is a lawn with a path to front door and communal parking. This property also offers a separate single garage.



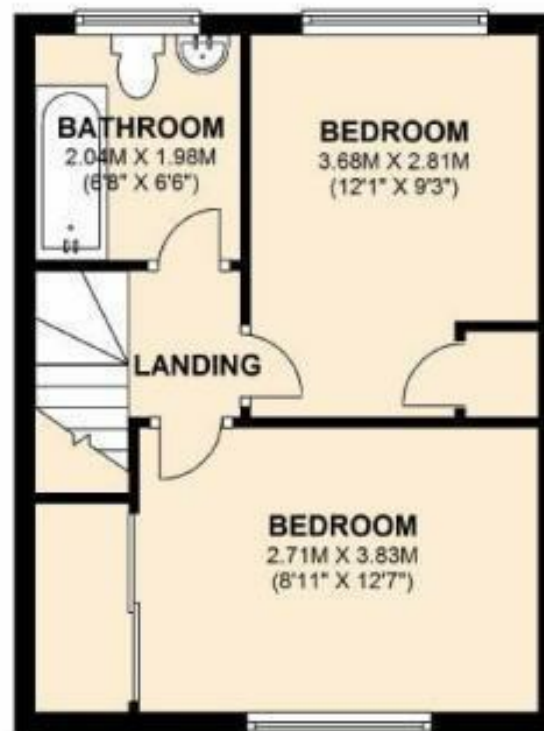
GROUND FLOOR

APPROX. 42.4 SQ. METRES (456.8 SQ. FEET)



FIRST FLOOR

APPROX. 31.5 SQ. METRES (339.2 SQ. FEET)



TOTAL AREA: APPROX. 74.0 SQ. METRES (796.0 SQ. FEET)

V&H Homes

01372 221 678

sales@vhomes.co.uk

www.vhhomes.co.uk



Your local property specialist