



Mulberry Way, Ashted KT21 2FE

V&H
HOMES

Your local property specialist

Mulberry Way Ashtead KT21 2FE

A superb and contemporary four bedroom detached family home offering modern living over three floors. The property features outstanding uninterrupted views to the front and a delightful first floor sun terrace, benefiting from afternoon sun with a south westerly aspect.

Detached Family Home

Four Spacious Bedrooms

Triple Aspect Family Room

Downstairs Cloakroom

Two Bathrooms

South Westerly Facing Garden

First Floor Sun Terrace

Covered Parking for Two Cars

Energy Efficient Solar Heating System

High EPC Rating: C





The kitchen boasts generous worktop space and ample floor and wall-mounted storage cupboards throughout. Integrated appliances ensure convenient meal preparation, and there's even space for a breakfast table.

On the first floor there are two double bedrooms including the master which not only has the sun terrace but also benefits from an ensuite. The top floor of this spacious property has two further double bedrooms and a good sized family bathroom.

Externally, in addition to the rear garden, there is two allocated off street parking spaces via a car port.

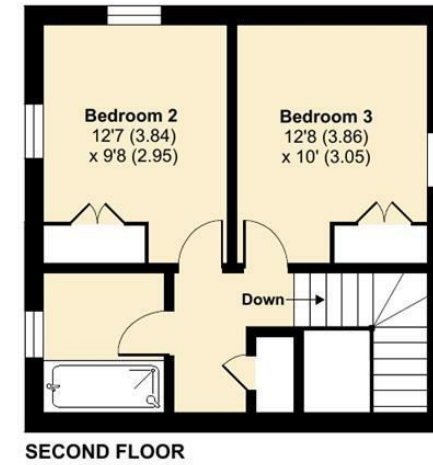
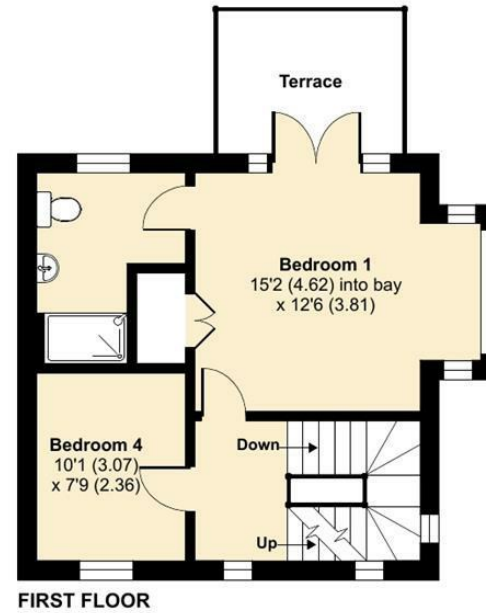
Set in landscaped gardens, the property was built to an exacting standard by Bewley Homes. This quite superb contemporary four bedroom townhouse offers ideal energy efficient modern living at its best. The property is located close to Ashted Village It is conveniently located near excellent nurseries, primary and secondary schools, as well as highly regarded private schools, amenities and the mainline railway station.



Mulberry Way, Ashted, KT21

Approximate Area = 1418 sq ft / 131.7 sq m

For identification only - Not to scale



Floor plan produced in accordance with RICS Property Measurement Standards incorporating International Property Measurement Standards (IPMS2 Residential). © nchecon 2024. Produced for V&H Homes. REF: 1190705

V&H Homes

01372 221 678

sales@vhomes.co.uk

www.vhomes.co.uk



Your local property specialist