



Bramble Walk, Epsom KT18 7TB

V&H
HOMES

Your local property specialist

WOHLING

Bramble Walk Epsom KT18 7TB

Set in the sought after picturesque Stamford Green Conservation Area, this unique spacious three bedroom, two bathroom detached bungalow offers character and charm in a semi rural location with views over Epsom Common and within walking distance of Epsom town centre. The accommodation has been extended and remodelled by the current owner to offer an open plan, contemporary feel.

Detached Bungalow

Three Bedrooms

Two Bathrooms

Courtyard Style Garden

Sought After Location

Close to Excellent Local Schools

Walking Distance to Epsom Town Centre

Views Over Epsom Common

0.8 Miles to Epsom Station

EPC D





Offering extended accommodation, the property comprises of a dual aspect lounge with views out to Epsom Common, with a character fireplace and vaulted ceiling; open plan to a contemporary kitchen with breakfast bar and dining area. French doors open onto an enclosed private garden laid with astro turf and leading to a useful summer house.

This charming bungalow offers flexible living. The spacious master bedroom, includes a contemporary ensuite shower room that also doubles as a utility room, and is currently being used as an annex.

There are two additional spacious bedrooms and stylish family bathroom.

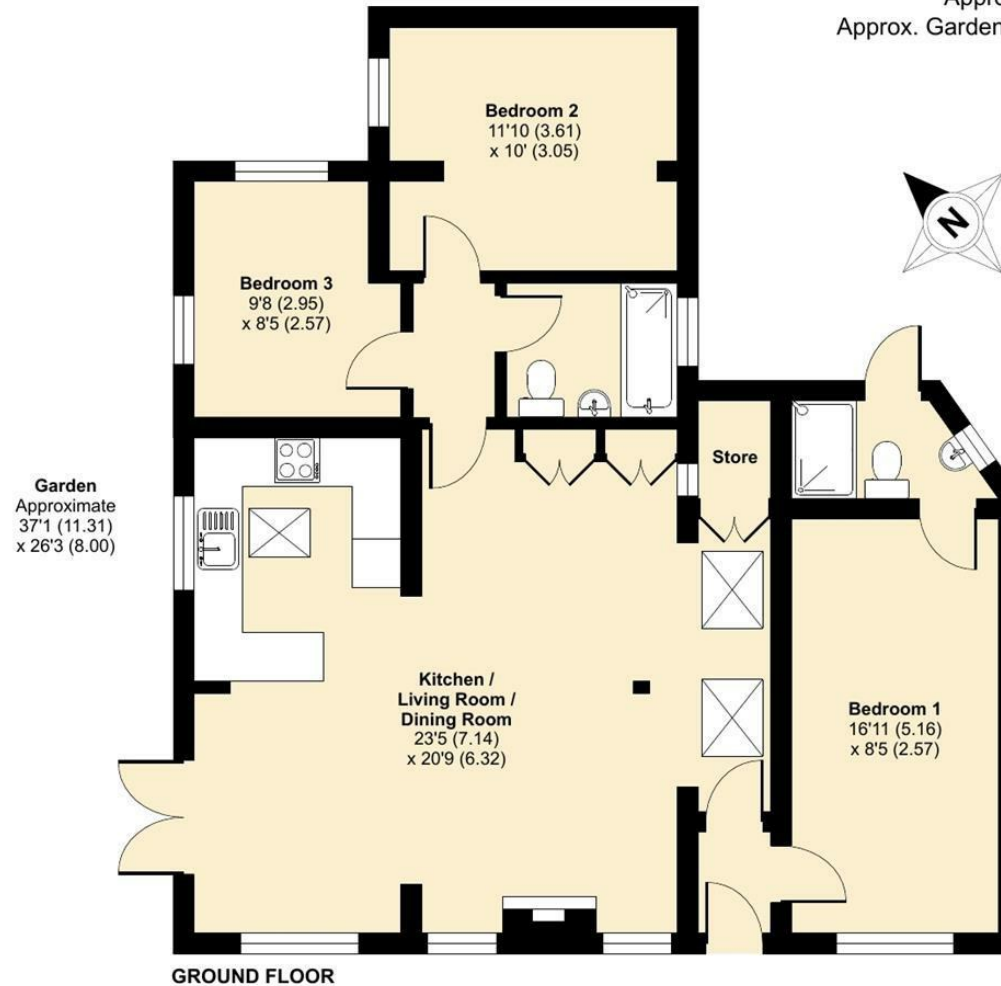
This very attractive, extended bungalow offers a mix of charm and contemporary living.



Bramble Walk, Epsom, KT18

Approximate Area = 968 sq ft / 89.9 sq m
Approx. Garden Length = 37'1 (11.31) x 26'3 (8.00)

For identification only - Not to scale



GROUND FLOOR



Floor plan produced in accordance with RICS Property Measurement Standards incorporating International Property Measurement Standards (IPMS2 Residential). © nche.com 2024. Produced for V&H Homes. REF: 1110218



V&H Homes

01372 221 678

sales@vhhomes.co.uk

www.vhhomes.co.uk



Your local property specialist