



Woodfield Road, Ashted KT21 2DZ



Your local property specialist

Woodfield Road Ashted KT21 2DZ

A superb, spacious two bedroom maisonette with a garage and communal grounds with low service charges situated opposite Ashted Common, a short walk from the station. This first floor home has loft access and is presented in excellent order. NO CHAIN.

First Floor Maisonette

Two Double Bedrooms

Lounge

Ashted Station 0.2 Miles

Next To Ashted Common

Large Loft With Potential To Extend

Garage

No Onward Chain

Leasehold

EPC C

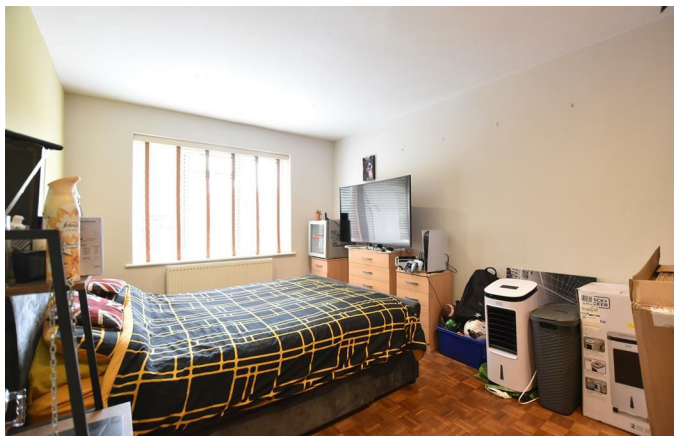


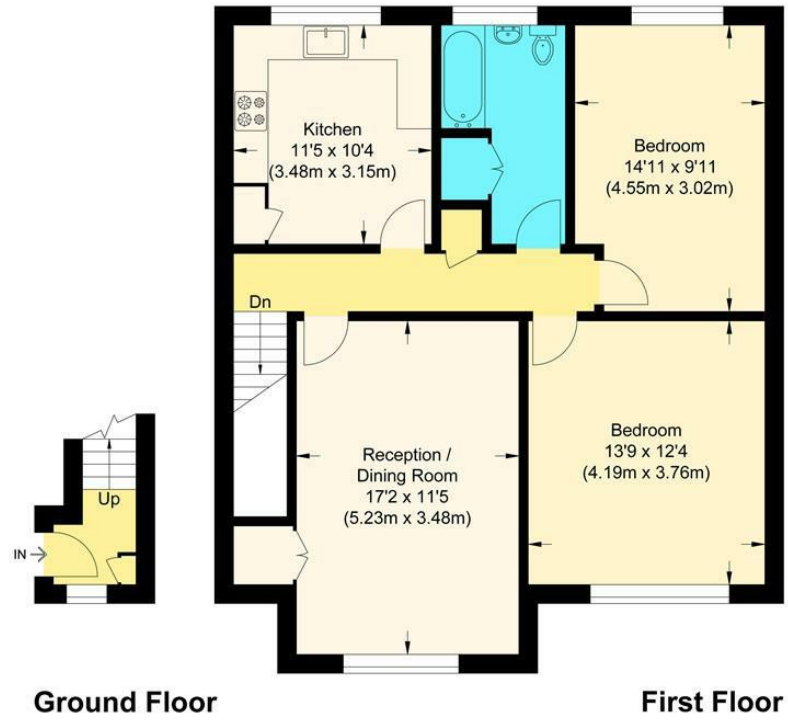


The personal front door leads via stairs to a spacious landing and accommodation comprising of two double bedrooms, a spacious lounge/dining room with integrated office cubbyhole, kitchen and bathroom.

The kitchen has been upgraded to provide an excellent array of contemporary units with a gloss finish, fitted butler sink and integrated appliances. Some of the original parquet flooring has been exposed and polished, setting off the stylish feel of the apartment.

Woodfield is set within a green open setting with views towards Ashted Common.





Approximate Gross Internal Floor Area : 81.40 sq m / 876.18 sq ft
 Illustration for identification purposes only, measurements are approximate, not to scale.

V&H Homes

01372 221 678

sales@vhhomes.co.uk

www.vhhomes.co.uk

