



Skidders Lane, Ashted KT21 2NR

V&H
HOMES

Your local property specialist

Skinners Lane Ashted KT21 2NR

V&H Homes are delighted to present this four bedroom detached family home located in the popular lanes area of Ashted. This charming family home offers an extended and renovated kitchen, luxurious en-suite bathroom and family shower room plus a delightful south west facing garden. Planning permission is in place to create a 2nd floor.

Detached Spacious Family Home

Recently Extended and Refurbished

Amazing Kitchen / Breakfast / Family Room

Four Double Bedrooms

Sought After "Lanes" Area of Ashted

Mature South West Facing Rear Garden

Garage and Off Street Parking

Excellent Local Schools

0.6 Miles to Ashted Station

EPC Rating D





The spacious accommodation comprises an entrance hall, three reception rooms and a large kitchen/breakfast/family room with access to the garden via patio doors. There is also a separate laundry room.

The first floor offers four large bedrooms; the master bedroom having a newly upgraded en-suite bathroom complete with roll top bath and separate shower. The family shower room has also recently been upgraded. Planning permission exists to create a second floor with two further bedrooms and a shower room.

The property is within a short distance of the village centre and within walking distance of some of the area's best schools. Ashted village offers an excellent range of shops for daily needs, Leatherhead and Epsom are within a short drive and the main line station is 0.6 miles away. (approx. 12 min walk)



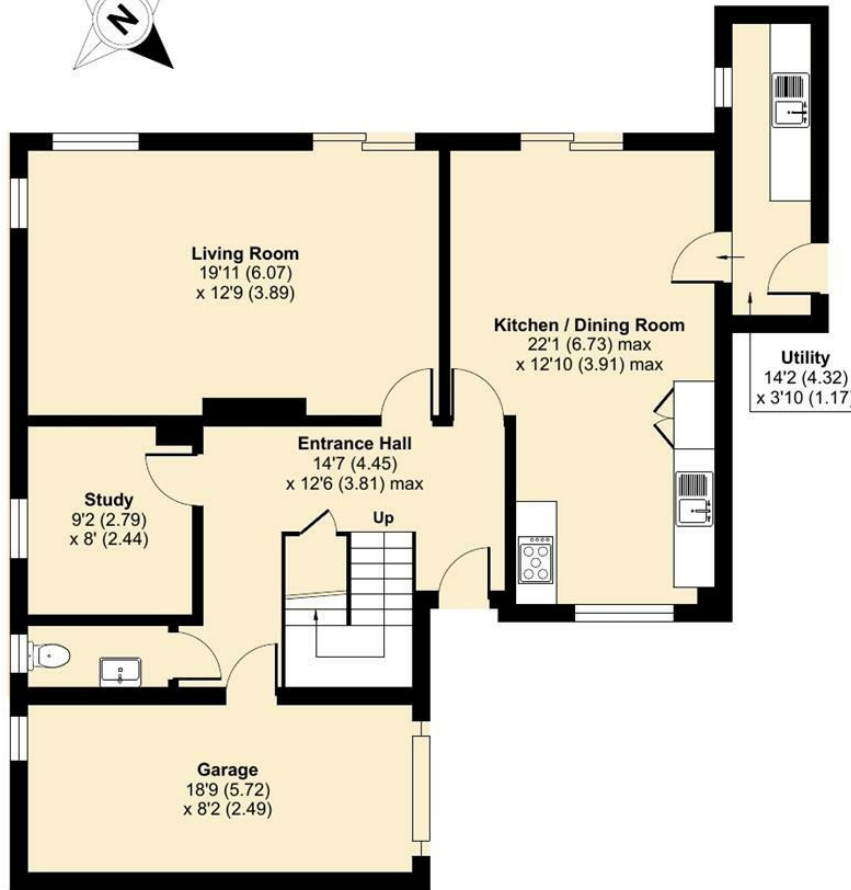
Skidders Lane, KT21

Approximate Area = 1722 sq ft / 160 sq m

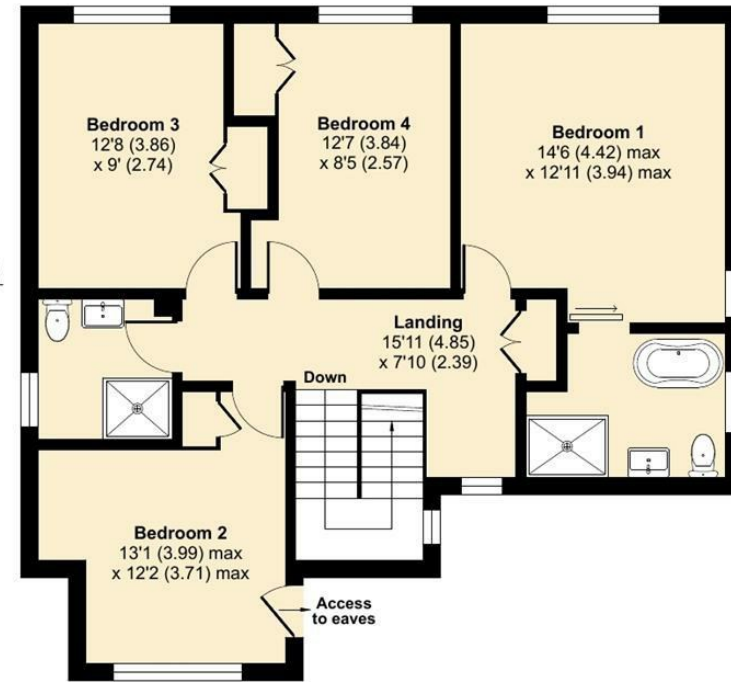
Garage = 152 sq ft / 14.1 sq m

Total = 1874 sq ft / 174 sq m

For identification only - Not to scale



GROUND FLOOR



FIRST FLOOR



Floor plan produced in accordance with RICS Property Measurement Standards incorporating International Property Measurement Standards (IPMS2 Residential). © nchecon 2024. Produced for V&H Homes. REF: 1121593



V&H Homes

01372 221 678

sales@vhomes.co.uk

www.vhomes.co.uk



Your local property specialist