



Woodfield Lane, Ashted KT21 2DJ

**V&H**  
HOMES

Your local property specialist

HOMES



## Woodfield Lane Ashted KT21 2DJ

*A fantastic spacious first floor apartment situated moments from Ashted Train Station and Craddocks Parade, suited to Buy To Let investors or First Time Buyers.*

First Floor Flat

Balcony

Two Double Bedrooms

Spacious Lounge/Dining Area

Modern Bathroom

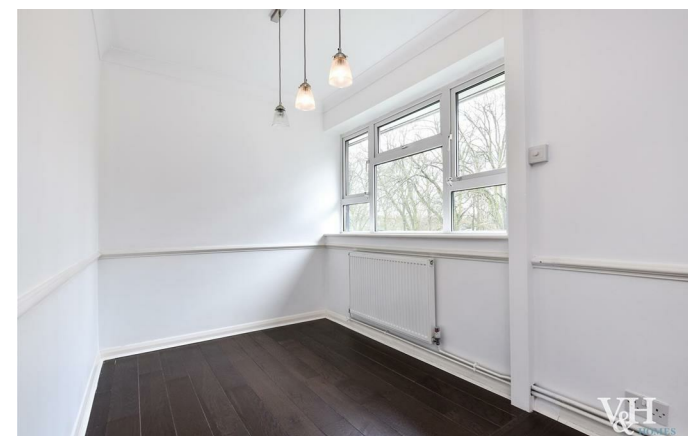
Garage Available on a Lease

No Onward Chain

Ashted Station 0.08 Miles

EPC Rating D (TBC)

Council Tax Band C







This rarely available property is ideally placed for local shops and access to the station. On entering the apartment, there is a spacious kitchen fitted with an array of units and work surfaces. The kitchen has access to the balcony, which also has some covered storage. There is a large L-shaped lounge/dining room (with potential to create a third bedroom/study), two double bedrooms both with fitted wardrobes and a modern family bathroom.

Outside, there is a garage available via separate lease and off-road parking.

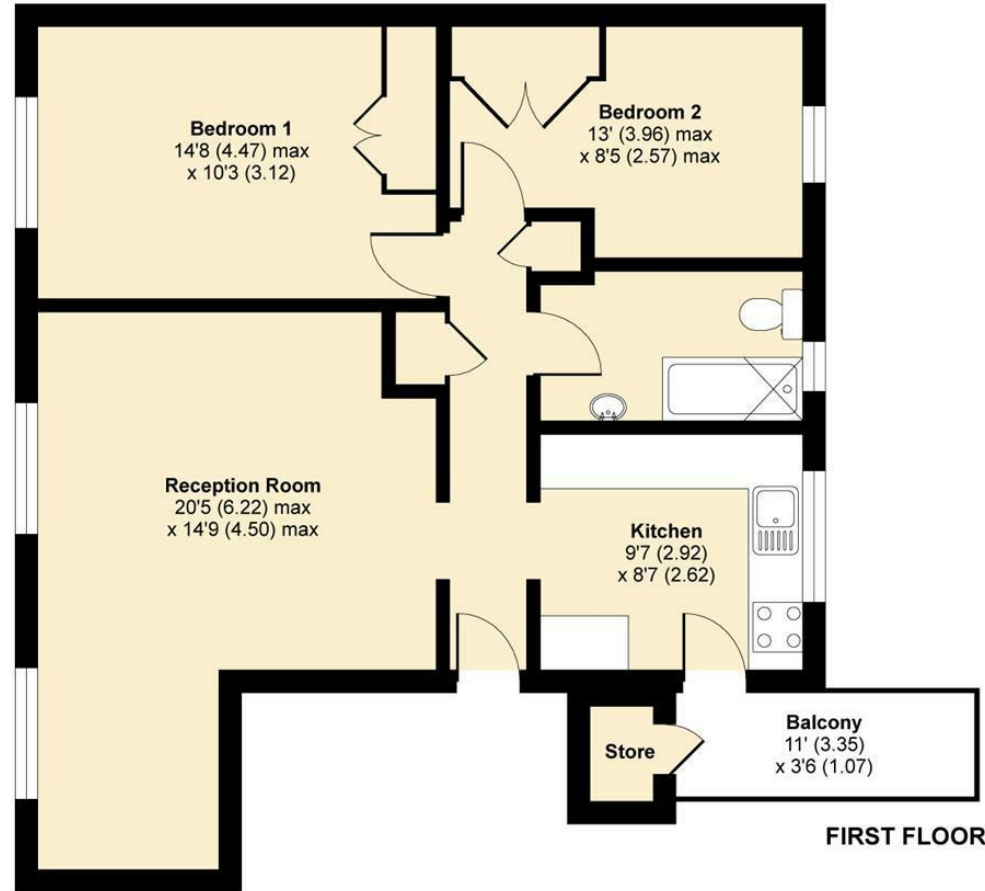
There is currently a tenant in situ making this apartment ideal as an on-going investment. It is also an excellent opportunity for first time buyers.

Viewings are highly recommended.



# Woodfield Lane, Ashted, KT21

APPROX. GROSS INTERNAL FLOOR AREA 713 SQ FT 66.2 SQ METRES



Whilst every attempt has been made to ensure the accuracy of the floor plan contained here, measurements of doors, windows and rooms are approximate and no responsibility is taken for any error, omission or misstatement. These plans are for representation purposes only as defined by RICS Code of Measuring Practice and should be used as such by any prospective purchaser. Specifically no guarantee is given on the total square footage of the property if quoted on this plan. Any figure given is for initial guidance only and should not be relied on as a basis of valuation.

Copyright nichecom.co.uk 2017 Produced for V&H Homes REF : 166247

**V&H Homes**

01372 221 678

sales@vhomes.co.uk

www.vhomes.co.uk



Your local property specialist