



Levett Road, Leatherhead KT22 7EG

**V&H**  
HOMES

Your local property specialist

## Levett Road Leatherhead KT22 7EG

*A spacious one bedroom apartment with plenty of natural light ideally located in a popular area of Leatherhead.*

End of Chain

One Bedroom

Spacious Apartment

Second Floor

Modern Bathroom

Contemporary Kitchen

Storage Shed

Communal Gardens

Close Proximity to Leatherhead Town Centre

EPC Rating E

The property is located 0.7 miles to Leatherhead train station offering excellent links into London Victoria and Waterloo.

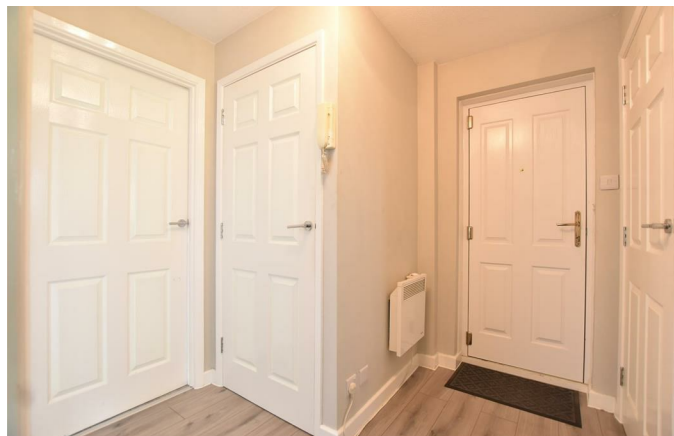


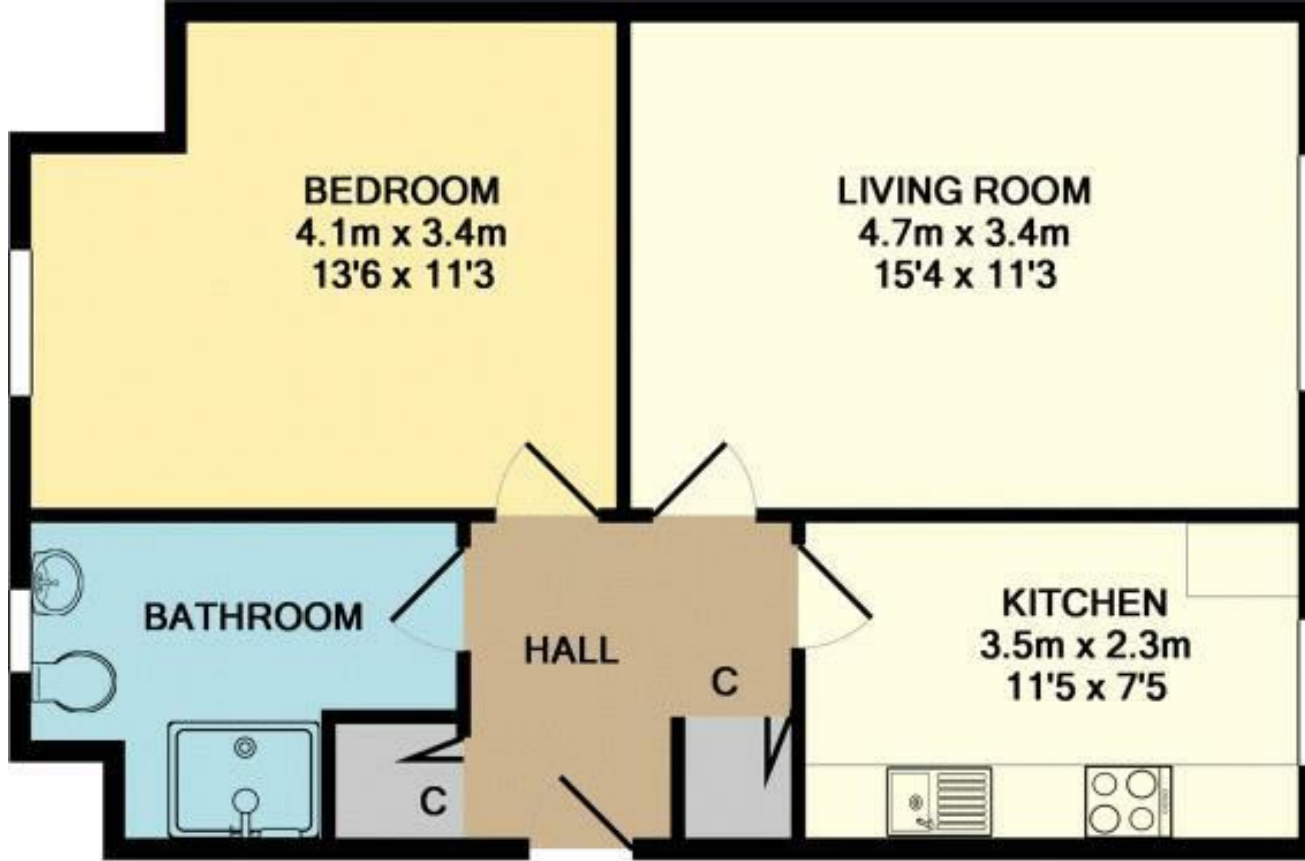


This charming second floor apartment offers an airy double bedroom, a generous sized living/dining room, a modern shower room and a well equipped contemporary kitchen fitted an array of fitted units and integrated appliances. In addition, this property benefits from new double glazed windows being fitted two years ago.

Externally there is an outside store, ideal for storing bikes, communal gardens and parking.

Whether you're a first-time buyer, downsizing, or seeking an investment opportunity, this flat offers great potential.





Whilst every attempt has been made to ensure the accuracy of the floor plan contained here, measurements of doors, windows, rooms and any other items are approximate and no responsibility is taken for any error, omission, or mis-statement. This plan is for illustrative purposes only and should be used as such by any prospective purchaser. The services, systems and appliances shown have not been tested and no guarantee as to their operability or efficiency can be given  
 Made with Metropix ©2018

**V&H Homes**

01372 221 678

sales@vhhomes.co.uk

www.vhhomes.co.uk

