



Hatherwood, Leatherhead KT22 8TT

V&H
HOMES

Your local property specialist

Hatherwood Leatherhead KT22 8TT

An attractive detached four bedroom family home, situated in a popular cul-de-sac location close to many sought after local schools.

Detached Family Home

Four Bedrooms

Two Bathrooms

Study

Downstairs Cloakroom

Easy Access to Excellent Local Schools

Cul-de-Sac Location

Garage & Car Port

Driveway Parking for Multiple Vehicles

EPC Rating C





The ground floor of this well proportioned property offers a bright spacious lounge with French doors into the dining room and patio doors with direct access into the rear garden.

In addition, there is a well equipped kitchen with side access, a useful study and a downstairs cloakroom.

Stairs lead from the hallway to the first-floor landing with four bedrooms and a three piece family bathroom. The principle bedroom benefits from fitted wardrobes and an en-suite shower room.

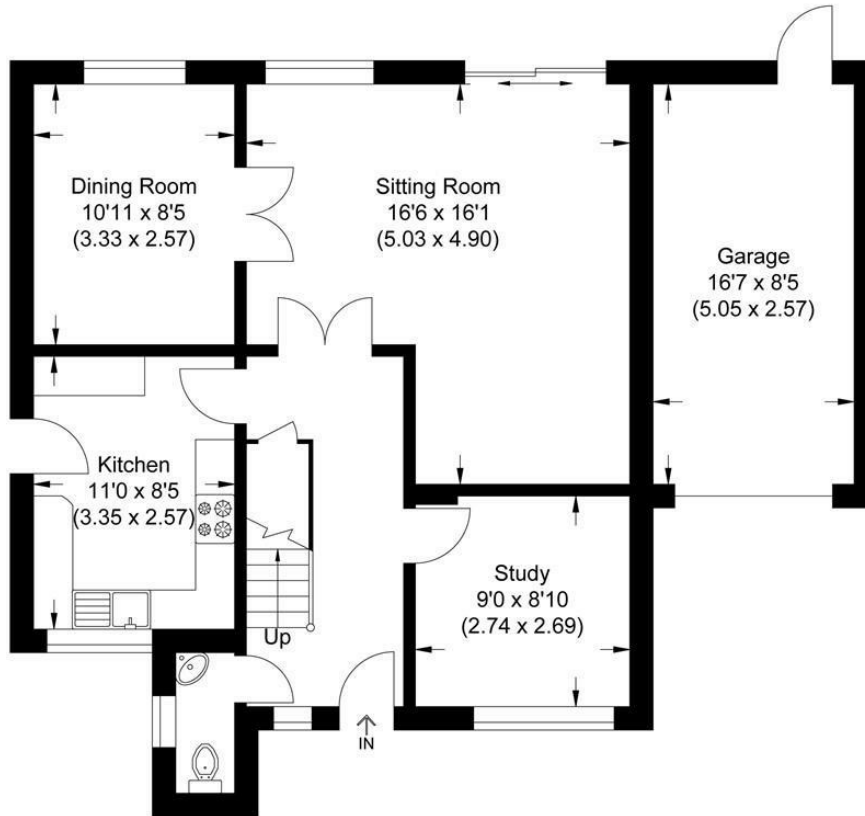
Externally, the secluded back garden is surrounded by mature trees and shrubs and has a large patio area ideal for al fresco dining.

To the front is parking for multiple vehicles and a garage with a carport.

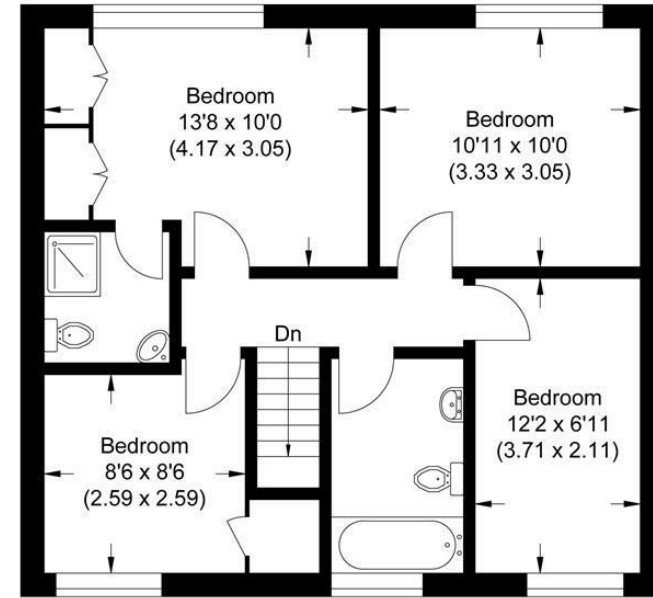




Approximate Gross Internal Area
112.0 sq m / 1205.55 sq ft
(Excludes Garage)
Garage Area 13.0 sq m / 139.93 sq ft



Ground Floor



First Floor

Illustration for identification purposes only, measurements are approximate, not to scale.

V&H Homes

01372 221 678

sales@vhomes.co.uk

www.vhomes.co.uk

