



Bramley Way, Ashted KT21 1RD

V&H
HOMES

Your local property specialist

Bramley Way Ashted KT21 1RD

A well presented spacious detached three bedroom family home, with a large southerly aspect rear garden and potential to extend STPP.

Three Bedrooms

Detached Family Home

Southerly Facing Garden

Potential To Extend STPP

Sought After Location

Garage

Conservatory

1 Mile from Rosebery School

0.7 Mile To Ashted Station

EPC Rating D

This property is situated in a popular location within easy reach of Ashted Station and close to sought after local schools.





On entering this excellent property, a useful porch opens into a welcoming hallway. Downstairs offers a bright airy lounge with a feature fireplace and double doors opening into a dining room, which in turns leads through to a conservatory with underfloor heating. In addition, there is a well-equipped fitted kitchen with an array of units with side access into the garden.

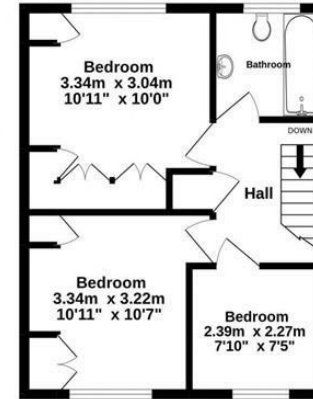
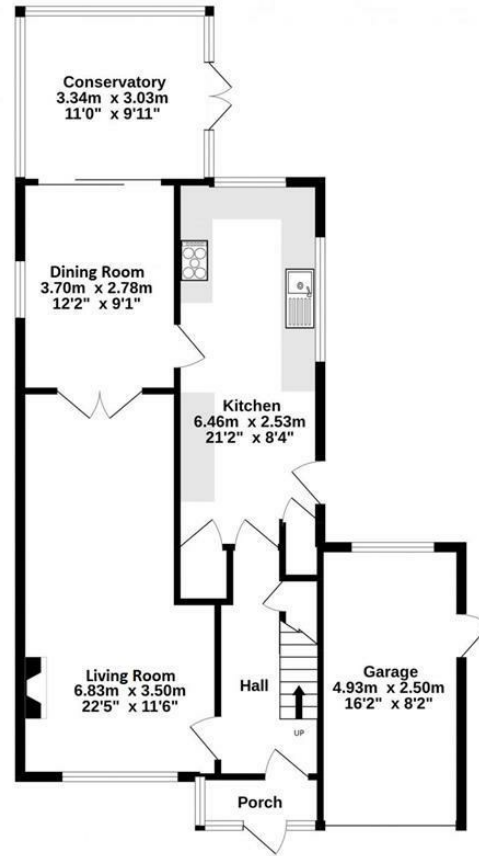
To the first floor, a landing leads to three bedrooms, two of which are doubles with built-in wardrobes. There is also a three-piece family bathroom.

Externally to the rear there is an attractive well maintained southerly facing mature garden surrounded by trees and shrubs. The garden also benefits from a spacious paved patio area ideal for al fresco dining and two storage sheds. To the front there is driveway parking for two cars and a garage.



Ground Floor
79.7 sq.m. (858 sq.ft.) approx.

1st Floor
36.3 sq.m. (390 sq.ft.) approx.



TOTAL FLOOR AREA : 116.0 sq.m. (1249 sq.ft.) approx.

Whilst every attempt has been made to ensure the accuracy of the floorplan contained here, measurements of doors, windows, rooms and any other items are approximate and no responsibility is taken for any error, omission or mis-statement. This plan is for illustrative purposes only and should be used as such by any prospective purchaser. The services, systems and appliances shown have not been tested and no guarantee as to their operability or efficiency can be given.
Made with Metropix ©2022

V&H Homes

01372 221 678

sales@vhomes.co.uk

www.vhomes.co.uk



Your local property specialist