



dfghdf Lodgehill Road, Selly Oak, Birmingham, B29 6NG

£114 Per Week



2025/2026 ACADEMIC YEAR Newly Refurbished Student Accommodation Suitable for Students and Professionals

AVAILABLE: SEPTEMBER 2025
 15 mins walk to University Of Birmingham Campus
 10 minutes walk to Bristol Road
 Close to Selly Oak Train Station
 Five Double bedrooms
 Fully Furnished
 Two Modern Bathrooms
 New Central Heating System
 Off road parking
 Security Alarm
 LOW DEPOSIT: £400/person (based on a group of 5 people)
 Available: Bills Package for only £26.01 per person per week

Newly refurbished 5 double bedroom student house on Milner Road, Selly Oak. Featuring spacious accommodation with an open plan kitchen-lounge space and two modern bathrooms. Conveniently located within walking distance to the University, Selly Oak train station, and Bristol Road shopping.

Don't let this opportunity slip through your fingers!
 Schedule a viewing by appointment only with Mason Knight. Your dream home in Selly Oak awaits!

Viewing

Please contact our MasonKnight Properties Office on 0121 472 5897 if you wish to arrange a viewing appointment for this property or require further information.



**Kitchen/
Living/
Dining
area**
6.53m x 3.52m
(21'5" x 11'7")

Bedroom
3.13m x 2.33m
(10'3" x 7'8")

Bedroom
3.91m (12'10") max
x 3.56m (11'8")

Shower Room

CPD

SD

SD

SD

SD

Bedroom
3.69m x 3.38m
(12'1" x 11'1")

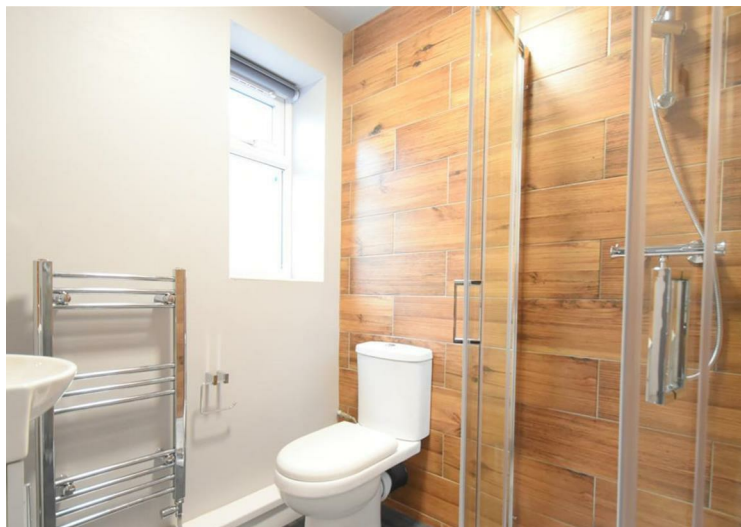
Bathroom

Landing

Bedroom
3.95m x 3.13m
(13' x 10'3")

Bedroom
2.64m x 2.39m
(8'8" x 7'10")

A map of the Bournbrook area in Birmingham, UK. A yellow location pin is placed on the A38 road, just north of Selly Oak. The map shows the A4040 road to the north, the A38 road running diagonally, and the A447 road to the east. Key locations labeled include BOURNBROOK, SELLY PARK, SELLY OAK, and STIRCHLEY. Roads shown include Swarthmore Rd, Raddlebarn Rd, and Cob Ln. The Cadbury World logo is visible in the bottom right. The Google logo is in the bottom left. Map data is attributed to ©2025 Google.



201B Tiverton Road, Selly Oak, West Midlands, B29 6DB
T. 0121 472 5897 | E. contact@masonknightproperties
W. masonknightproperties.co.uk