



## 2546hb St. Stephens Court, Selly Oak, Birmingham, B29 7SA

### £1,698 Per Calendar Month

 4 
  2 
  1 
  B

2025/2026 ACADEMIC YEAR LovelyStudent Accommodation Suitable for Students and Professionals

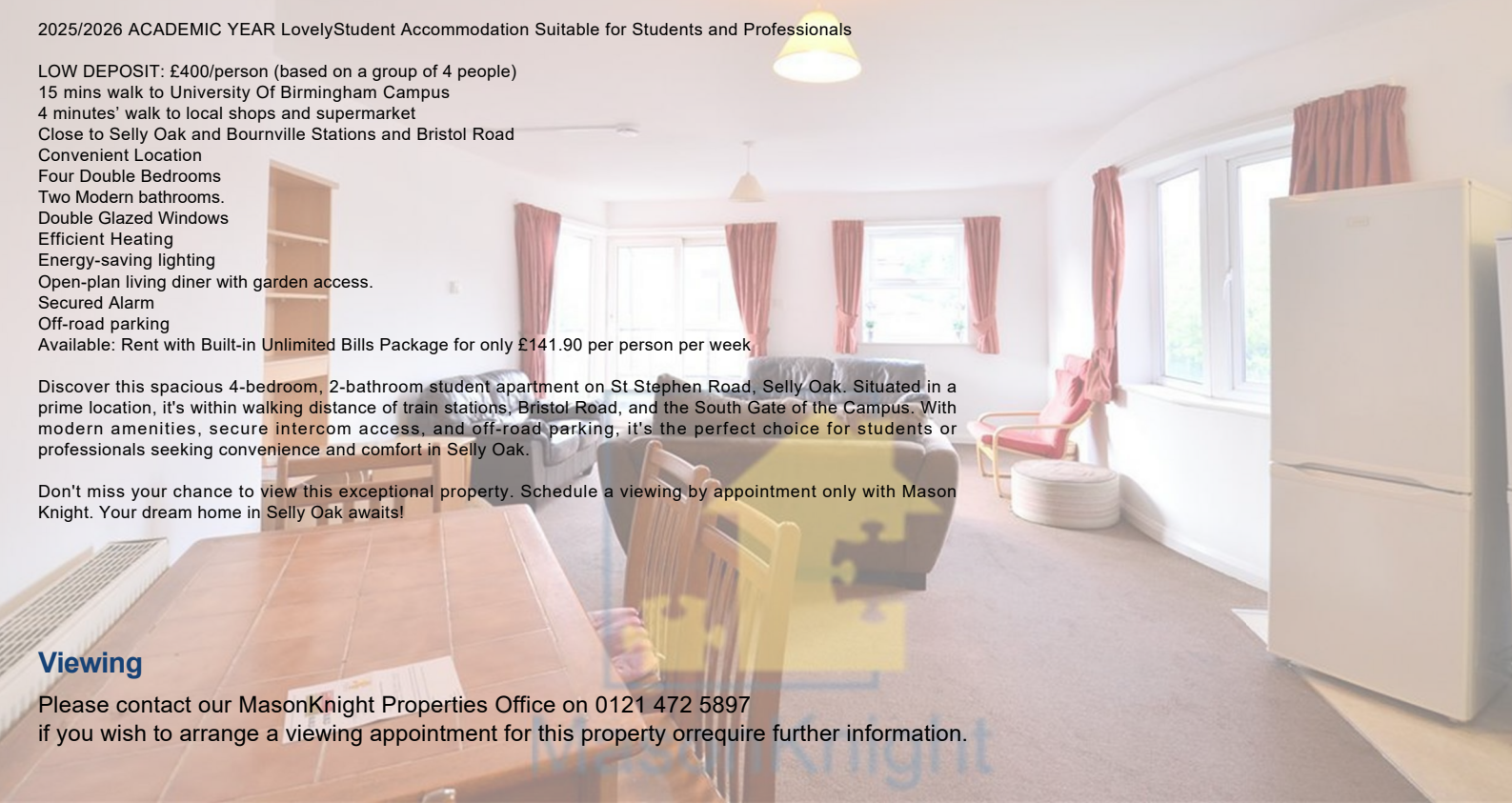
LOW DEPOSIT: £400/person (based on a group of 4 people)  
 15 mins walk to University Of Birmingham Campus  
 4 minutes' walk to local shops and supermarket  
 Close to Selly Oak and Bournville Stations and Bristol Road  
 Convenient Location  
 Four Double Bedrooms  
 Two Modern bathrooms.  
 Double Glazed Windows  
 Efficient Heating  
 Energy-saving lighting  
 Open-plan living diner with garden access.  
 Secured Alarm  
 Off-road parking  
 Available: Rent with Built-in Unlimited Bills Package for only £141.90 per person per week

Discover this spacious 4-bedroom, 2-bathroom student apartment on St Stephen Road, Selly Oak. Situated in a prime location, it's within walking distance of train stations, Bristol Road, and the South Gate of the Campus. With modern amenities, secure intercom access, and off-road parking, it's the perfect choice for students or professionals seeking convenience and comfort in Selly Oak.

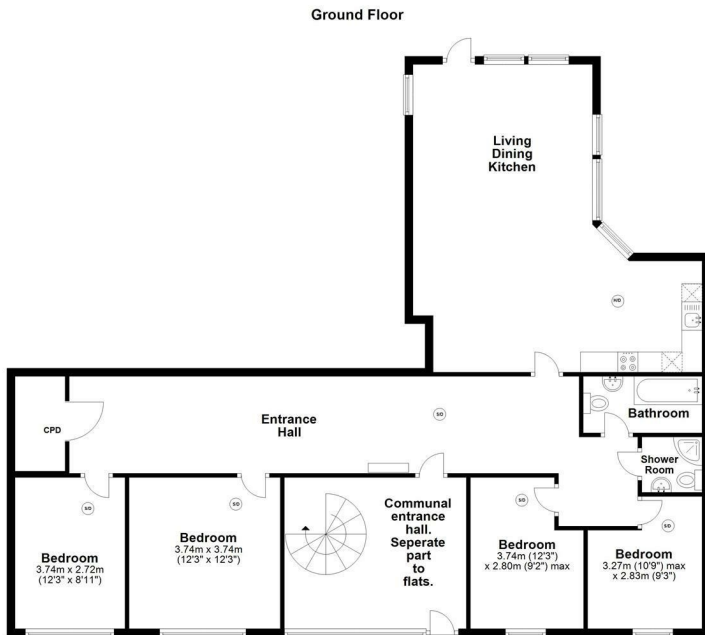
Don't miss your chance to view this exceptional property. Schedule a viewing by appointment only with Mason Knight. Your dream home in Selly Oak awaits!

### Viewing

Please contact our MasonKnight Properties Office on 0121 472 5897 if you wish to arrange a viewing appointment for this property or require further information.







Flat 2, St Stephens Ct, St Stephens Road, Selly Park, Birmingham



Energy Efficiency Rating			Environmental Impact (CO <sub>2</sub> ) Rating		
	Current	Potential		Current	Potential
Very energy efficient - lower running costs			Very environmentally friendly - lower CO <sub>2</sub> emissions		
(92 plus) A			(92 plus) A		
(81-91) B			(81-91) B		
(69-80) C			(69-80) C		
(55-68) D			(55-68) D		
(38-54) E			(38-54) E		
(21-38) F			(21-38) F		
(1-20) G			(1-20) G		
Not energy efficient - higher running costs			Not environmentally friendly - higher CO <sub>2</sub> emissions		
England & Wales	EU Directive 2002/91/EC		England & Wales	EU Directive 2002/91/EC	



These particulars, whilst believed to be accurate are set out as a general outline only for guidance and do not constitute any part of an offer or contract. Intending purchasers should not rely on them as statements of representation of fact, but must satisfy themselves by inspection or otherwise as to their accuracy. No person in this firm's employment has the authority to make or give any representation or warranty in respect of the property.