

KINGS PLACE,
BUCKHURST HILL

Farr O'Neil
RESIDENTIAL ESTATE AGENTS



Available immediately | Two bedroom character bungalow | Superb location with Queens Road's shops and Central Line Station close by | Epping Forest a stone's throw away | Modern kitchen and bathroom | Spacious lounge | Offered unfurnished | West facing courtyard garden | Not to be missed! | EPC rating D67

£1,395 per month

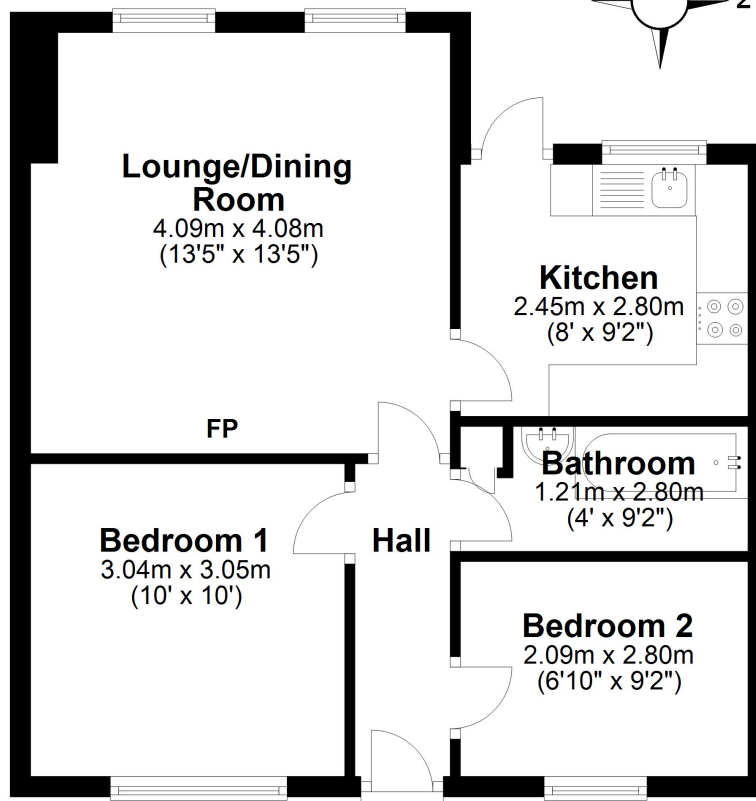
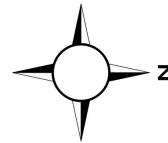
020 8504 9344 | info@farroneil.co.uk | www.farroneil.co.uk



Available immediately. This delightful two bedroom bungalow is full of character and charm. Features include a spacious lounge with feature fireplace, two well appointed bedrooms, modern kitchen and bathroom. The property has a westerly facing courtyard garden and enjoys the backdrop of Epping Forest. The property is situated in a superb spot, just around the corner from Queens Road with its mix of cafes, restaurants and boutique shops. The Central Line Station is just a short walk away, with its direct links to the City, West End and Canary Wharf, and for road users the M11, M25 and routes into London are all easily accessible. The area is well served with plenty of leisure pursuits.

Ground Floor

Approx. 46.7 sq. metres (502.7 sq. feet)



Total area: approx. 46.7 sq. metres (502.7 sq. feet)

Ground Floor

Approx. 46.7 sq. metres (502.7 sq. feet)



Total area: approx. 46.7 sq. metres (502.7 sq. feet)

Whilst every care is taken to ensure the accuracy of these details no responsibility for errors or misdescription can be accepted nor is any guarantee offered in respect of the property. These particulars do not constitute any part of an offer or contract.
Details Prepared on 8th July, 2021

020 8504 9344

| info@farroneil.co.uk

| www.farroneil.co.uk