



THE SHARFF PROJECT

WELCOME TO THE SHARP PROJECT

GREEN
PRO MOTION - KIT HIRE

The Sharp Project is Manchester's flagship digital production complex.

The Sharp Project is home to over 60 digital entrepreneurs, businesses and production companies: sharp-thinkers, early adopters, makers, doers, innovators and thinkers of incredible ideas who specialise in pioneering, creating, producing and distributing cutting-edge digital content, new media, film and television.

Featuring

4 large production spaces, 4 green screen equipped studios, 60 office spaces, The Campus members' hub and events space.



INTRODUCTION



The Sharp Project's 200,000 sq ft of space provides high-quality & cost-effective offices, workspaces and production stages & studios for its tenants, in addition to flexible membership packages on offer for freelancers, and a range of hi-spec events, green-screen studio and post-production space available for hire.

It is supported by a first-class technical infrastructure and broadband connectivity, which when combined with its collaborative ecology and distinctive approach to management, creates a unique workspace which is at the

forefront of Manchester's global digital offer, and always in-demand. Unafraid of new territories, edgy, determined and with a sprinkle of Mancunian grit, The Sharp Project has become an international hallmark of quality, synonymous with creativity, innovative thinking and astute business sense.

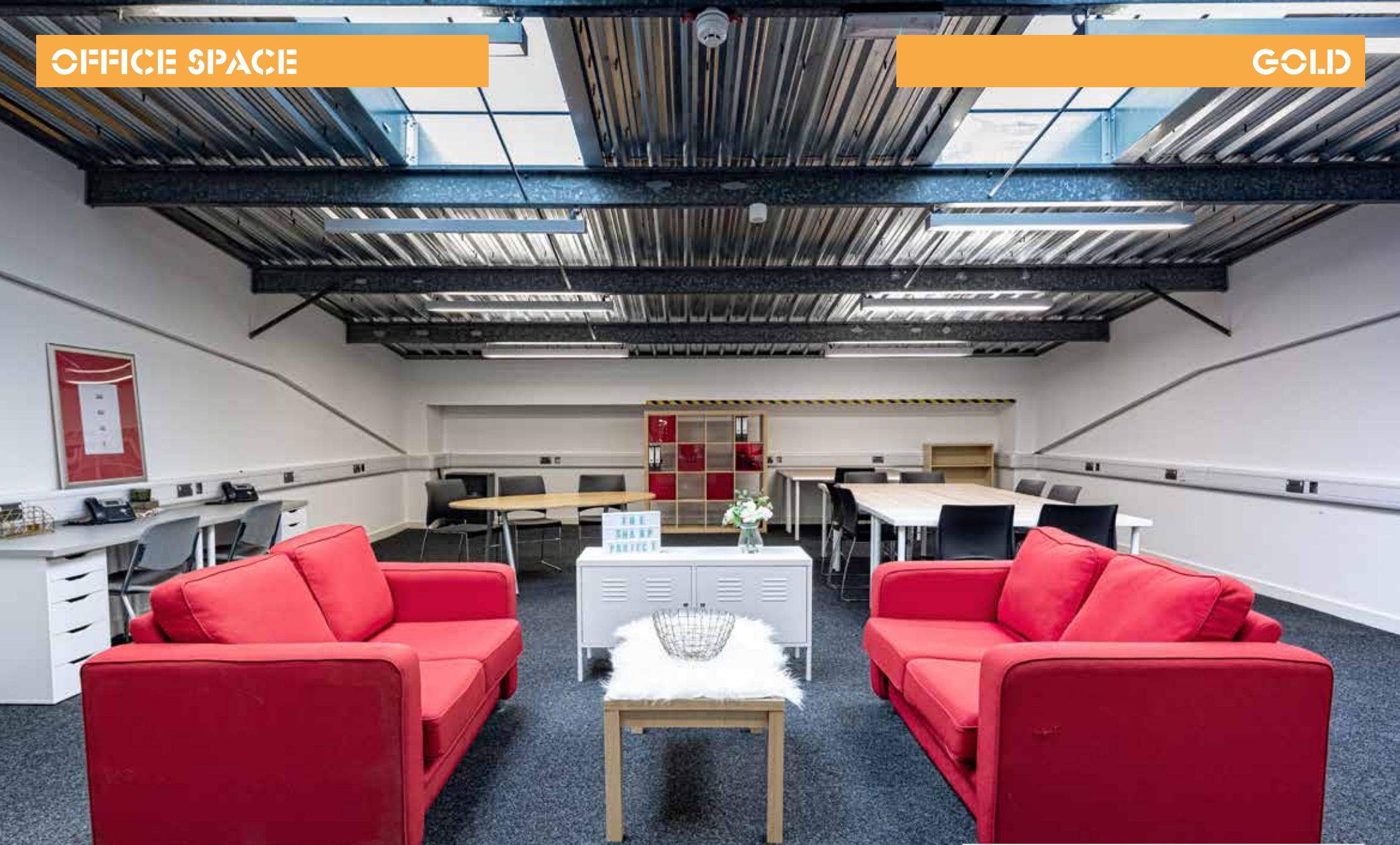
Its success is founded on a delicately balanced ecology, which is both created and sustained by a strict adherence to its tenant admission policy, ensuring tenants' involvement in, or the support thereof, marking

manipulating or moving around the world of digital content in order to make money and grow the sector.

The resulting ecosystem fosters both collaboration and competition, stimulating innovation and creativity, and nurturing businesses to grow and develop within a uniquely supportive yet challenging environment.

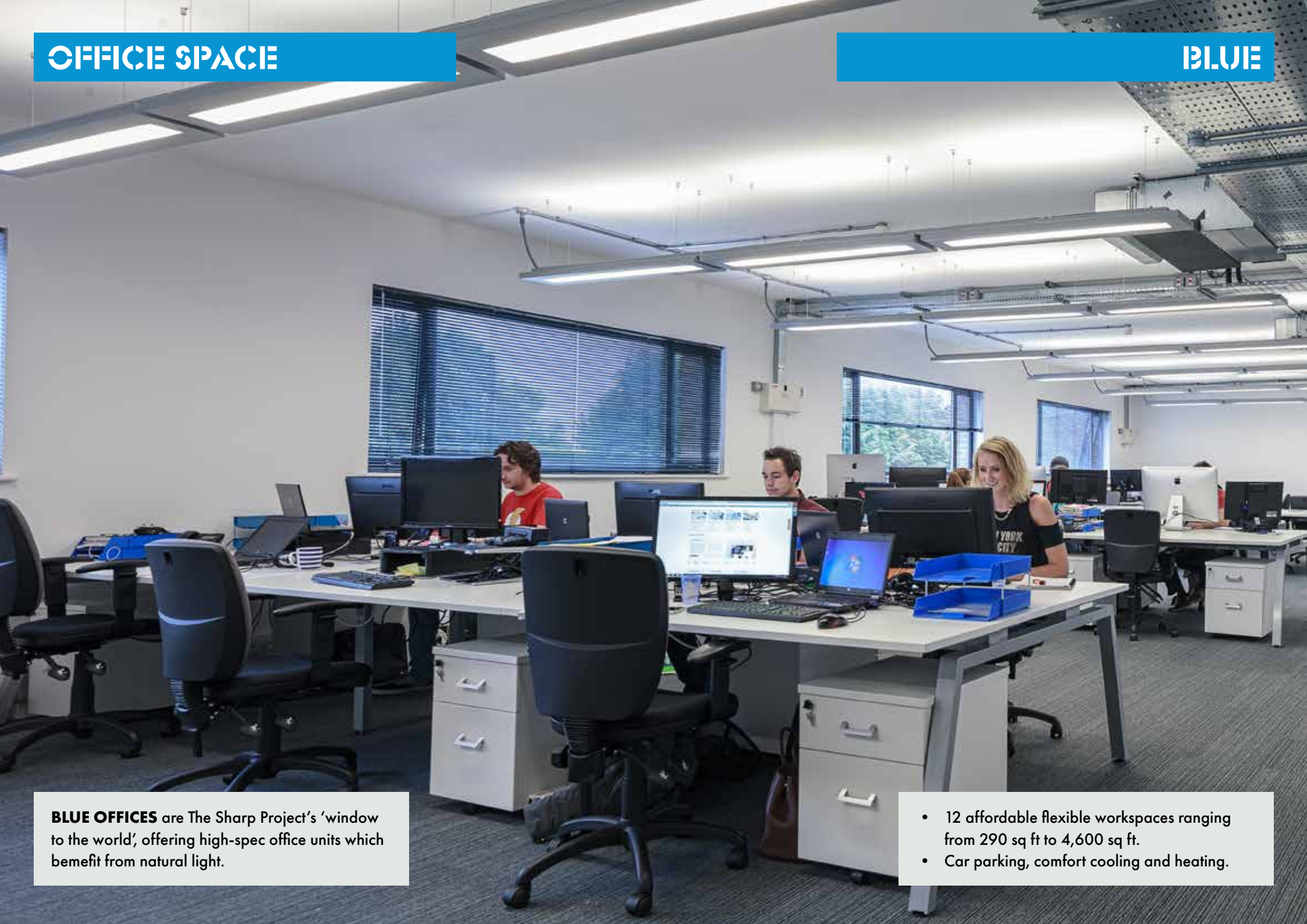
SPACE : POWER : CONNECTIVITY : PEOPLE





GOLD OFFICES are available on ground or mezzanine level, with glass frontages overlooking activity in **The Campus** members' hub.

- Affordable, flexible workspaces ranging from 500 sq ft to 1,300 sq ft.
- Car parking, comfort cooling and heating.



BLUE OFFICES are The Sharp Project's 'window to the world', offering high-spec office units which benefit from natural light.

- 12 affordable flexible workspaces ranging from 290 sq ft to 4,600 sq ft.
- Car parking, comfort cooling and heating.



RED OFFICES hosting 32 spaces in converted shipping containers, the Red zone operates as a futuristic 'high-street', with glazed frontages adding to a unique sense of community, openness and collaboration.

- The shipping containers create affordable and flexible workspaces; 16 double and 16 single, placed in two terraced rows.
- Single containers are 160 sq ft (8 ft x 20 ft)
- Double containers are 320 sq ft (16 ft x 20 ft)

STUDIO 005

	FEET	METRES
Length	21	6.6
Width	20	6.2
Height	16	5
Stage Size	453 sq ft	42 sq m

STUDIO 006

	FEET	METRES
Length	26	8
Width	20	6.2
Height	16	5
Stage Size	545 sq ft	51 sq m

STUDIO 007

	FEET	METRES
Length	23	7.2
Width	20	6.2
Height	16	5
Stage Size	496 sq ft	46 sq m

FEATURES

- Enhanced reverberation and acoustic performance
- Wi-Fi connectivity and enhanced packages available
- White, Green Chroma Key, black wool drapes on a triple track system



TENANTS SERVICES

The Facilities Management Team is on-hand to work with tenants, businesses and clients in getting exactly what they need from The Sharp Project's space.

- Catering facilities include a cafe area hosting in The Campus for day and night time entertaining. 24 / 7 vending and bespoke catering for meetings, events and productions.
- Mailboxes.
- Showers / Wash rooms.
- Bike store.
- Lockers.
- Container Storage.
- Free car parking.
- 24 hour security, HD CCTV.
- 365 day access.





400 sq m (3,700 sq ft) stage, L 24 m x W 18 m x H 6.5 dimensions, 3 phase power with 200 amos per phase and single phase power.

- Standalone Infinity wall up to 5.0 m high and 7.5 m wide
- Black serge wool drapes and continuous track around the full perimeter of the stage
- Acoustic folding partition to stage door and

- sound lock lobby
- Wi-Fi connectivity and enhanced packages available
- Covered unloading and loading for stage and prop vehicles

**STAGE THREE**

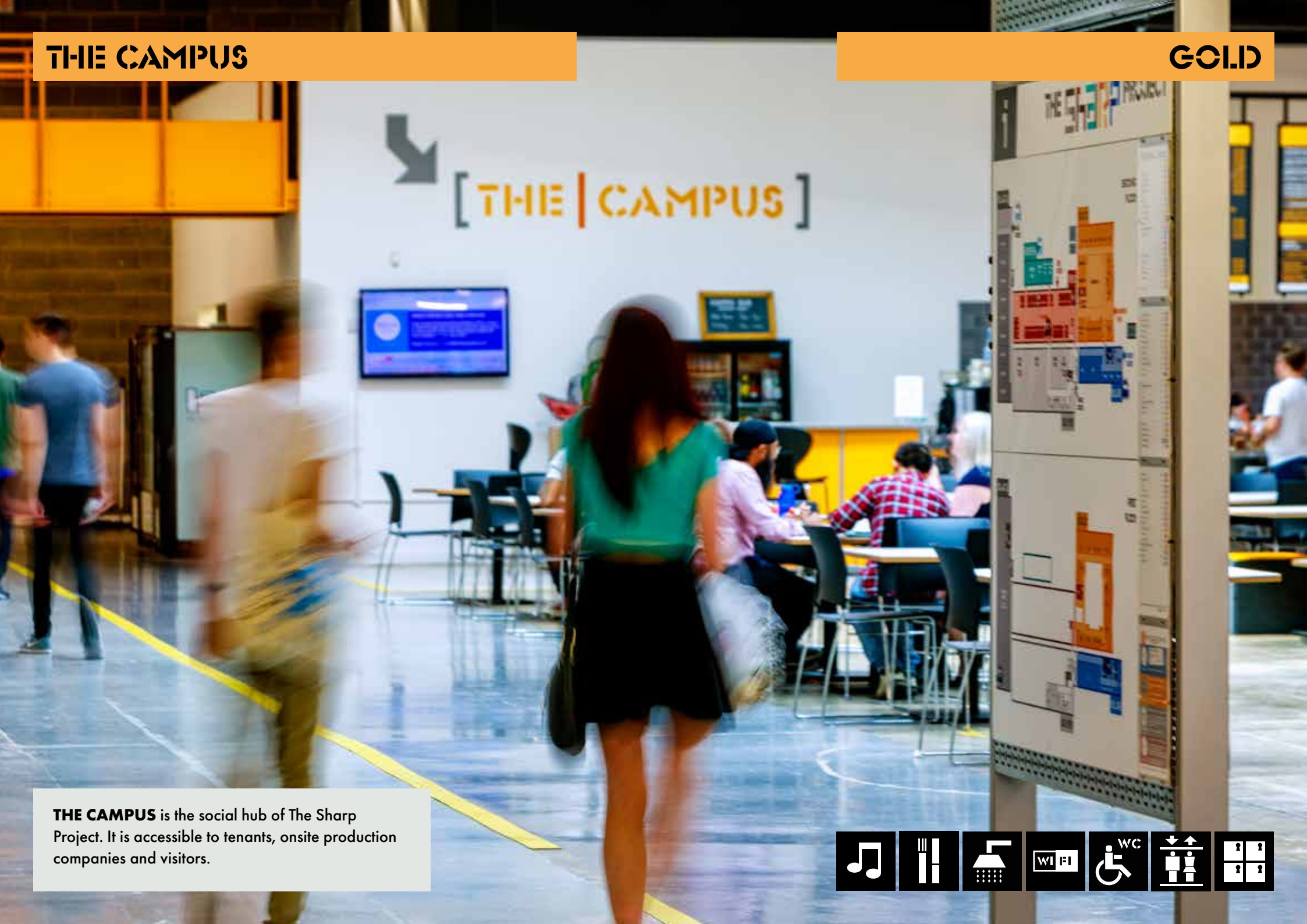
576 sq m (6,200 sq ft) stage, L 24 m x W 24 m x H 6.5 m dimensions, 3 phase power with 400 amps per phase.

STAGE FOUR

2,768 sq m (29,800 sq ft) production stage, L 86 m x W 32 m x H 6.5 m dimensions, 3 phase power with 400 amps per phase.



3 PHASE



THE CAMPUS is the social hub of The Sharp Project. It is accessible to tenants, onsite production companies and visitors.



HOW TO GET TO THE SHARP PROJECT

The Sharp Project is centrally located 10 minutes outside Manchester city centre in the North West of England and is close to air, motorway and public transport connections. It is 30 minutes from Manchester International Airport, and on the main arterial route into Manchester city centre, close to motorway connections.

Please note that the site can become very busy. If you are visiting a tenant please ask them to request a car park space in advance of your visit.

Should the Sharp Project car park be full there is also a Pay & Display car park on Thorp Road available for visitors. Please note that it is an independent car park though and is not managed by The Sharp Project.



CAR

Satnav – 1 Thorp Road, M40 5BJ (53.50201, -2.19344)

From Manchester City Centre

Head towards the Northern Quarter or Victoria Station, then onto Oldham Road (A62) via Great Ancoats Street. Continue along Oldham Road for 2 miles (3 km) and turn left onto Thorp Road (B6393), then immediately left again into The Sharp Project and press the buzzer.



BUS

The following services pass The Sharp Project:

24, 72, 82, 83, 180, 181, 184, 188, X82 and X84

Buses leave from Stand F on Lever Street or at the bottom of Oldham Road. The journey takes about 10 minutes. Look for the Holiday Inn on your right, then “The Gateway” junction on your left, and The Sharp Project is the large building immediately on your left. Alight at the second stop and walk in the direction you were travelling; turn left onto Thorp Road, then left again and report to the security lodge.



TRAIN

If your train stops at Manchester Piccadilly or Deansgate, you can use your ticket on the Metrolink (tram) to reach Victoria Station, whereupon you can travel to The Sharp Project by Metrolink tram, although you’ll need to purchase a ticket for the second part of the journey (See metrolink information above)

If your train stops at Oxford Road, you’ll be able to use the ticket to travel to Victoria, from where you can take the tram.

Victoria and Piccadilly stations also have taxi ranks; we are located approximately 2.5 miles (4 km) from both stations.



METROLINK (TRAM)

Our nearest Metrolink stop is Central Park, which is on the Oldham & Rochdale line (via Victoria Station).

The Sharp Project’s entrance is approximately a quarter of a mile (400 metres) from the stop. Turn right out of the Metrolink and then walk up the hill under the bridge on The Gateway then turn left onto Oldham Road, then left again onto Thorp Road, where you’ll find the main entrance on your left.

(Remember, if you’re getting a train from outside Manchester and it says Manchester CTLZ (central/city zone) on the train ticket, you’ll be able to travel to Victoria Station on the tram for free. However, this will not allow you travel for free to Central Park, which is outside the Central Zone. You’ll need to purchase a separate ticket for this journey.)

THE SHARPP PROJECT



enquiries@thesharpproject.co.uk



0161 205 5508



[@sharpproject](https://twitter.com/sharpproject)



[@thesharpproject](https://www.instagram.com/thesharpproject)