



# Camden Mews

Camden, NW1

£3,500 per month  
(£807.69 per week)

This spacious two double bedroom house is situated within this highly desirable Camden Mews. The house comprises; two reception rooms, kitchen, two bedrooms and two bathrooms.



# Camden Mews

## Camden, NW1

- Floor to ceiling windows
- Wooden flooring
- Spacious accommodation throughout
- Marble bathrooms



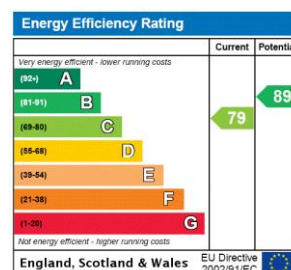


This spacious two double bedroom house is situated within this highly desirable Camden Mews. The house comprises; two reception rooms, kitchen, two bedrooms and two bathrooms.

This spacious house further benefits; wooden flooring, floor to ceiling windows, marble bathrooms and a private patio garden. The property available March.

Camden Mews is ideally situated moments from the highly renowned Camden Square, close to local amenities and good transport links.

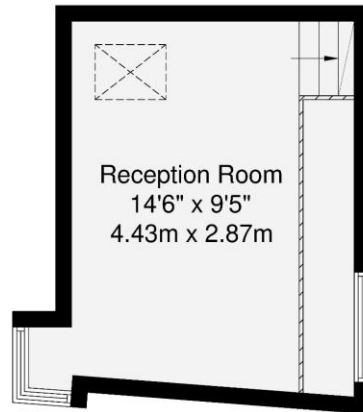
**Minimum Term:** 12 months  
**Deposit Required:** £0.00  
**Local Authority:** Camden  
**Council Tax Band:** G  
**EPC Rating:** C  
**Furnished, Part Furnished, Unfurnished**



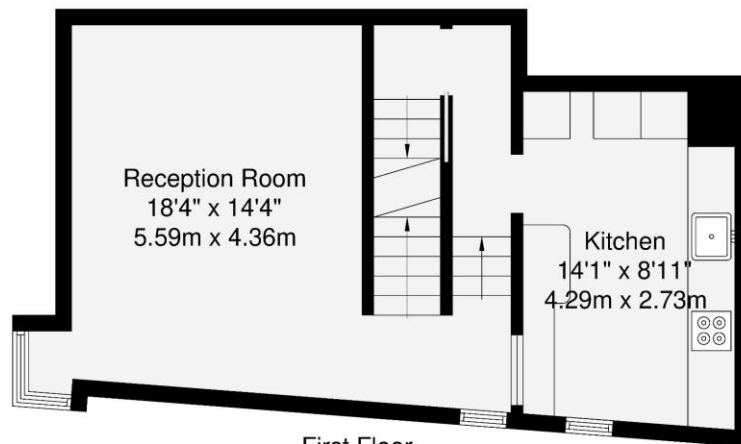
### Chestertons Camden & Primrose Hill Lettings

99-101 Parkway  
 London  
 NW1 7PP  
[camdentownlettingsusers@chestertons.co.uk](mailto:camdentownlettingsusers@chestertons.co.uk)  
 02072673574  
[chestertons.co.uk](http://chestertons.co.uk)

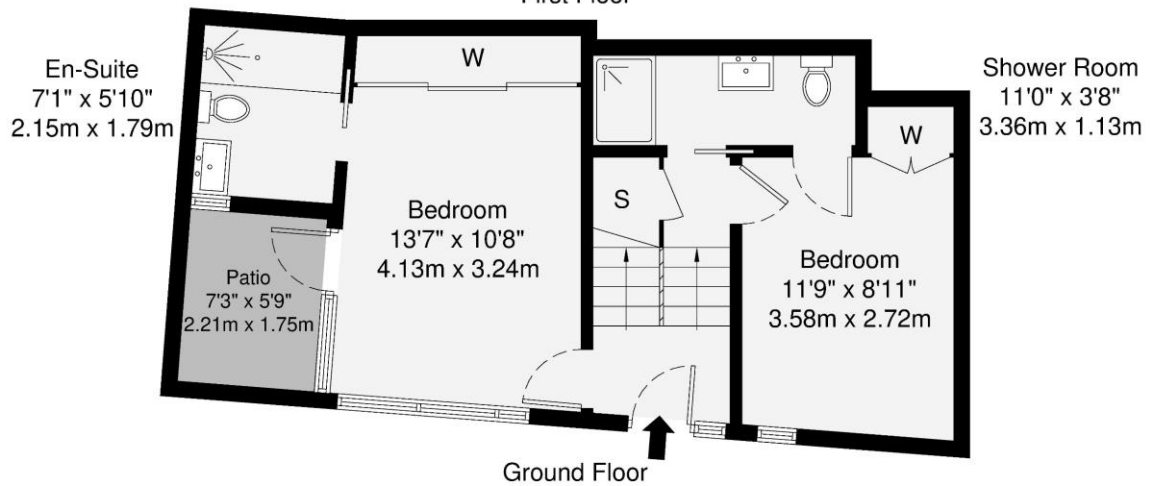
Additional tenant charges apply (fees apply to non-AST tenancies only)  
 Tenancy Agreement Fee: £300  
 References per Tenant/Guarantor: £60  
 Inventory check (approx. £100 – £250 inc. VAT)  
[chestertons.co.uk/property-to-rent/applicable-fees](http://chestertons.co.uk/property-to-rent/applicable-fees)



Second Floor



First Floor



Ground Floor

GROSS INTERNAL AREA (GIA)  
The footprint of the property  
93.5 sq m / 1006 sq ft

TOTAL STORAGE SPACE  
Storage and wardrobe total area  
3.1 sq m / 33 sq ft

EXTERNAL FEATURES  
Garden, Balcony, Terrace, Verandah etc.  
3.8 sq m / 40 sq ft

RESTRICTED HEAD HEIGHT  
Limited use area under 1.5m  
0.0 sq m / 0.0 sq ft

Disclaimer : Floorplan measurements are approximate and are for illustrative purposes only. While we do not doubt the floorplan accuracy and completeness, you or your advisors should conduct a careful, independent investigation of the property in respect of monetary valuation.

Maison  
VUE