



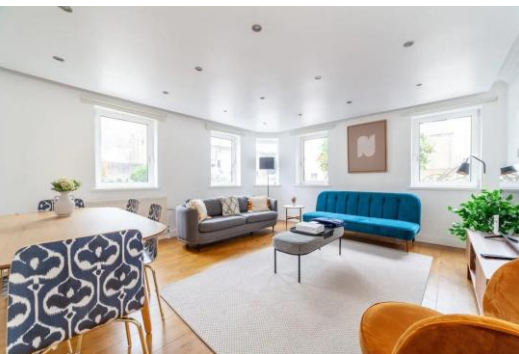
Edward Mews

Redhill Street, NW1

£4,500 per month
(£1,038.46 per week)

A modern and spacious three-bedroom lateral apartment arranged on the raised ground floor of a secure, gated purpose-built development.

CHESTERTONS



Edward Mews

Redhill Street, NW1

- Three double bedroom apartment
- An abundance of space and finished to a high spec throughout
- Modern fully fitted eat-in kitchen
- Located only seconds from Regents Park

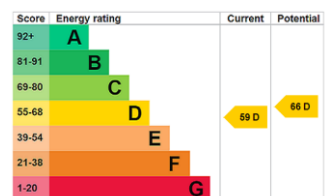


A modern and spacious three-bedroom lateral apartment arranged on the raised ground floor of a secure, gated purpose-built development.

The property comprises an entrance hallway, a large dual-aspect reception room providing excellent natural light, and a separate fully fitted eat-in kitchen. Accommodation includes a principal bedroom with fitted wardrobes and en-suite bathroom, two further bedrooms (one with fitted wardrobes and the other with freestanding wardrobes), and a contemporary family shower room.

Further benefits include wooden flooring throughout and off-street

Minimum Term: 6 months
Deposit Required: £2,076.92
Local Authority:
Council Tax Band: G
EPC Rating: D
Furnished



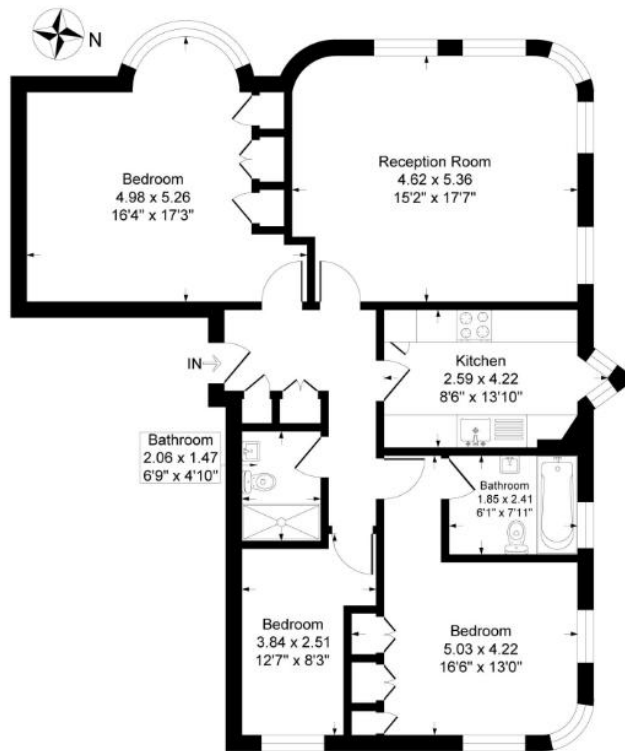
Chestertons Camden & Primrose Hill Lettings

99-101 Parkway
 London
 NW1 7PP
camdentownlettingsusers@chestertons.co.uk
 02072673574
chestertons.co.uk

Additional tenant charges apply (fees apply to non-AST tenancies only)
 Tenancy Agreement Fee: £300
 References per Tenant/Guarantor: £60
 Inventory check (approx. £100 – £250 inc. VAT)
chestertons.co.uk/property-to-rent/applicable-fees

Edward Mews, London, NW1

Approximate Gross Internal Floor Area = 96.4 sq m / 1038 sq ft



Raised Ground Floor

Illustration for identification purposes only, measurements are approximate, not to scale.

