



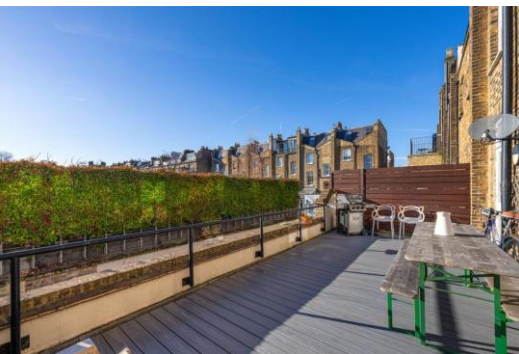
Chalcot Road

London, NW1

£4,500 per month
(£1,038.46 per week)

Set on one of Primrose Hills most popular roads is this bright two bedroom home with a generous roof terrace.

CHESTERTONS



Chalcot Road

London, NW1

- Top Floor Apartment
- Heart Of Primrose Hill
- Two Bedrooms
- Private Roof Terrace
- Furnishing Negotiable
- Available Late December



Set on one of Primrose Hills most popular roads is this bright two bedroom home with a generous roof terrace.

Arranged over the top floor of a well presented terraced building, the apartment comprises bright living area, separate kitchen, two further bedrooms and a fully tiled bathroom.

Located to enjoy the charm of Primrose village as well as the local green spaces of Primrose Hill and Regents park, the property benefits from easy access into Central London whilst Camden accessible nearby.

Minimum Term: 12 months
Deposit Required: £5,192.31
Local Authority:
Council Tax Band:
EPC Rating: To be confirmed
Unfurnished

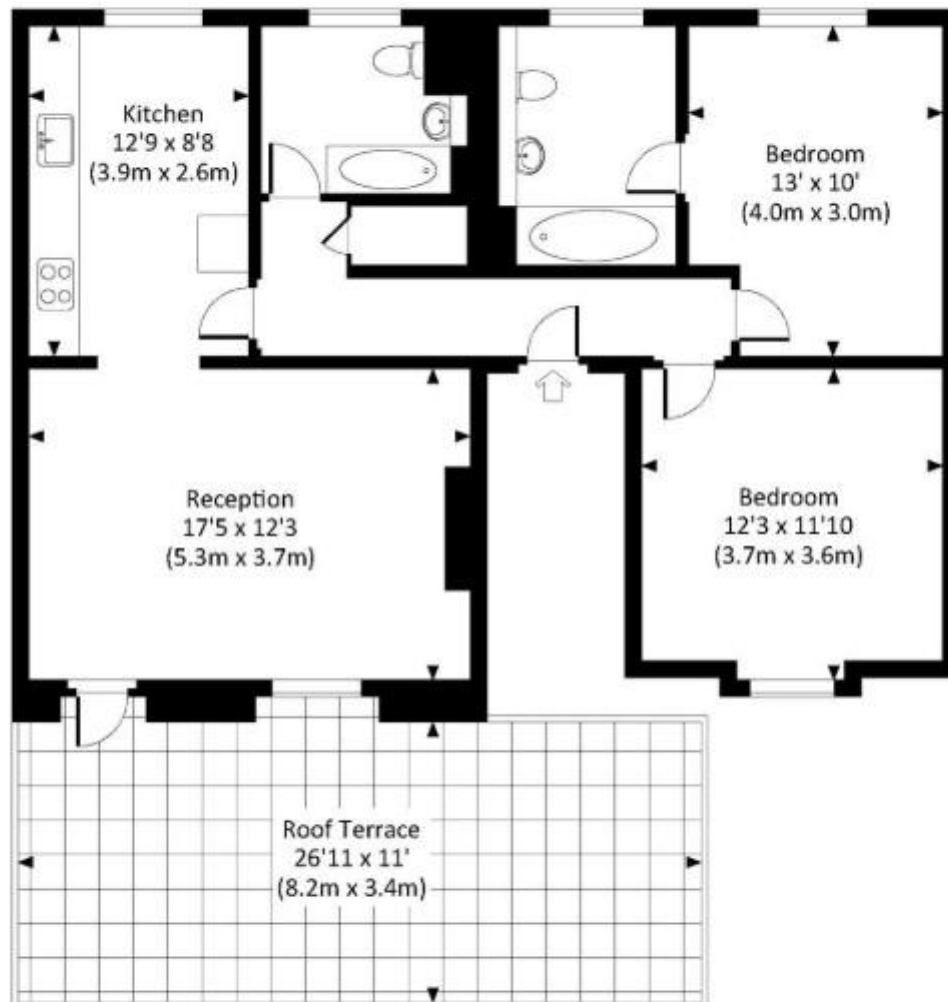
Chestertons Property Services

The Lantern
75 Hampstead Road
London
NW1 2PL
valuations@chestertons.co.uk
020 3040 8440
chestertons.co.uk

Additional tenant charges apply (fees apply to non-AST tenancies only)
Tenancy Agreement Fee: £300
References per Tenant/Guarantor: £60
Inventory check (approx. £100 – £250 inc. VAT)
[chestertons.co.uk/property-to-rent/applicable-fees](https://www.chestertons.co.uk/property-to-rent/applicable-fees)

CHALCOT ROAD, NW1

Approx. gross internal area
835 Sq.Ft. / 77.6 Sq.M.



FIRST FLOOR



All measurements have been made in accordance with RICS Code of Measuring Practice which are approximate only and only for illustrative purposes. For the avoidance of doubt, Bowling Jones Design shall not be liable for any reliance on these measurements. © 2020 www.bowlingjones.com 020 7520 5600

