

AGAR GROVE

£2,700 pcm

LONDON NW1

CHESTERTONS

AGAR GROVE

This modern two double bedroom apartment is situated on the second floor within this impressive pub conversion. The property comprises; open plan reception room, two double bedrooms and two bathrooms.





Specifications

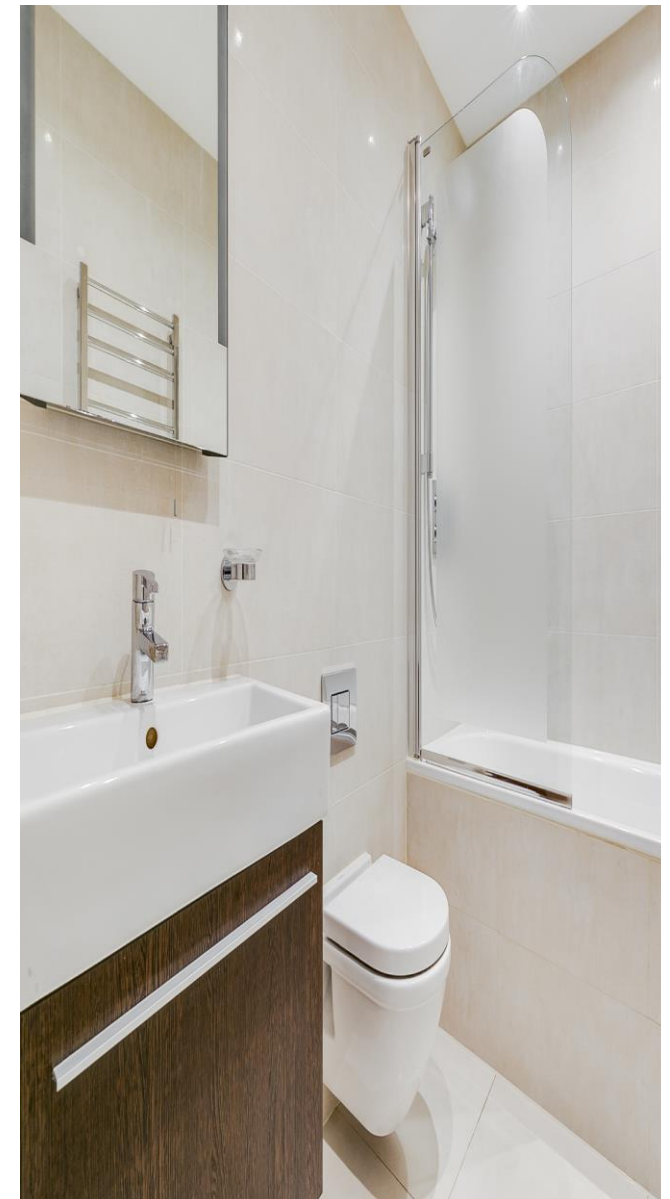
- Newly refurbished 2 bedroom 2 bathroom apartment
- Second floor
- Reception Room with wood flooring
- Open plan Kitchen incl dishwasher and washer dryer
- Master Bedroom with luxury en-suite Shower Room
- Second Double Bedroom
- Family Bathroom
- Use of Communal Storage Room
- Available now.



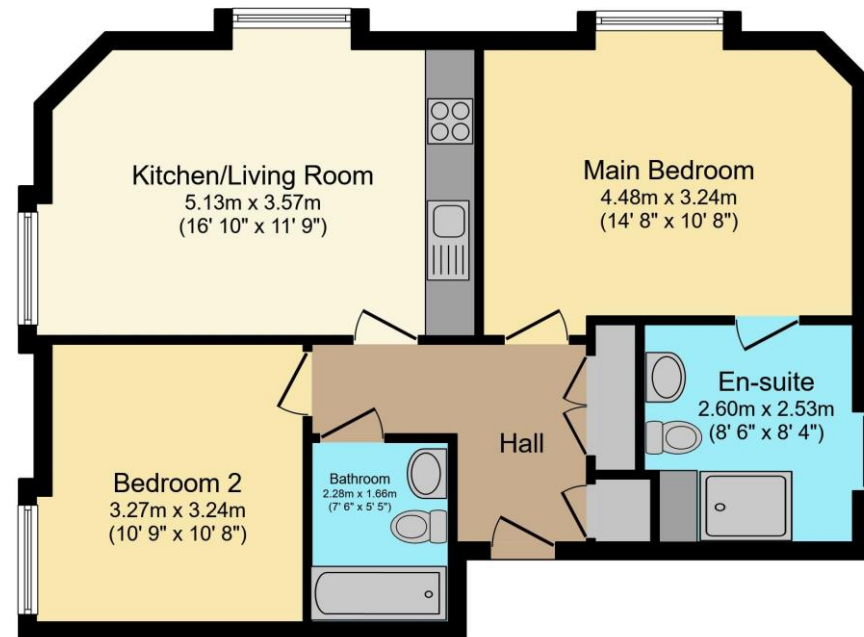








Price: | EPC: D



Total floor area 63.8 sq.m. (687 sq.ft.) approx

This floor plan is for illustrative purposes only. It is not drawn to scale. Any measurements, floor areas (including any total floor area), openings and orientation are approximate. No details are guaranteed, they cannot be relied upon for any purpose and they do not form part of any agreement. No liability is taken for any error, omission or misstatement. A party must rely upon its own inspection(s). Plan produced for Purple Bricks. Powered by www.focalagent.com

Agar Grove, NW1

Approximate gross Internal area
63.8 sq m / £3.93/Sq.Ft. p/m

This plan is for layout guidance only. Not drawn to scale unless stated. Windows and door openings approximate. Whilst every care is taken in the preparation of this plan, please check all dimensions, shapes and compass bearings before making decisions reliant upon them.

Location

Agar Grove is ideally situated moments from all the amenities of Camden and close to Camden over ground station.



Chestertons Camden & Primrose Hill
99-101 Parkway
London, NW1

02072673574
camdentownlettingsusers@chestertons.
chestertons.co.uk

Chesterton Global Ltd trading as Chestertons for themselves and for the vendor of this property whose agents they are, give notice that (i) these particulars do not constitute any part of an offer or contract, (ii) all statements contained within these particulars are made without responsibility on the part of Chestertons or the vendor, (iii) whilst made in good faith, none of the statements contained within these particulars are to be relied upon as a statement or representation of fact, (iv) any intending purchasers must satisfy themselves by inspection or otherwise as to the correctness of each of the statements contained within these particulars, (v) the vendor does not make or give either Chestertons or any person in their employment any authority to make or give representation or warranty whatsoever in relation to this property. Wide angle lenses may be used. ©Copyright Chestertons | Chesterton Global Ltd | Registered Office 40 Connaught Street, Hyde Park, London W2 2AB Registered Company Number 05334580.

