

SOUTH VILLAS

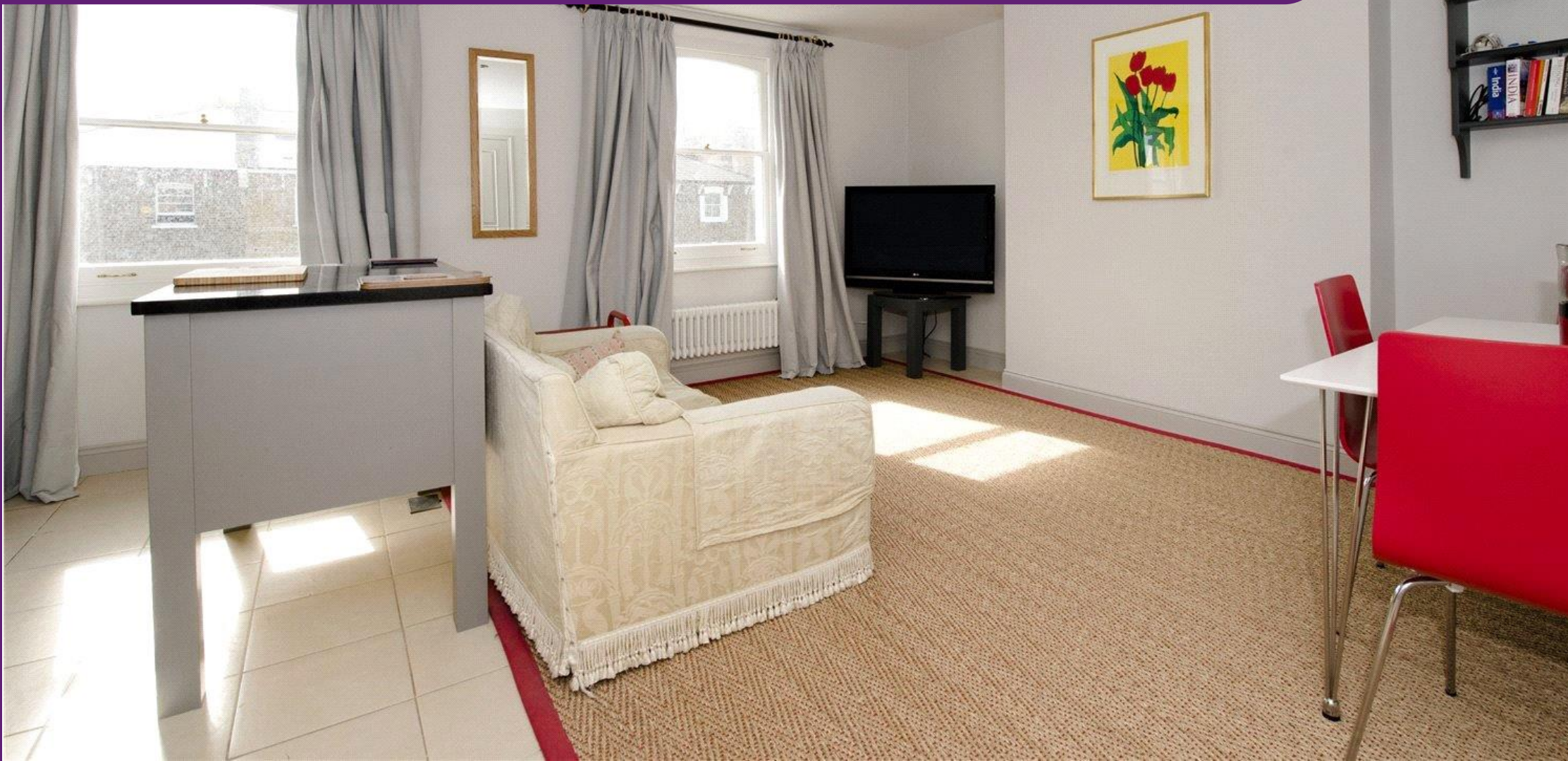
£2,500pcm

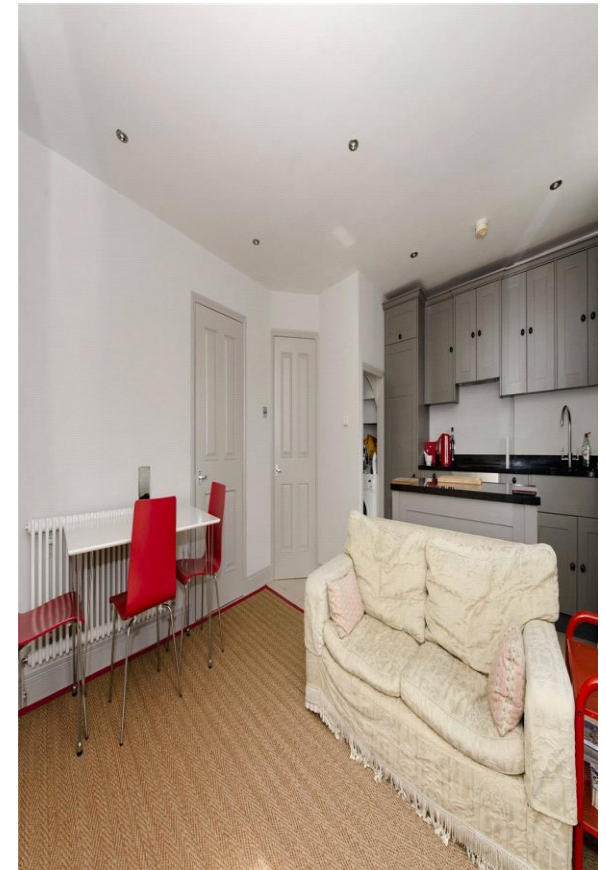
LONDON NW1

CHESTERTONS

SOUTH VILLAS

This modern two double bedroom split level apartment is situated on the top two floors within this impressive period conversion. The property comprises; open plan reception, two double bedrooms and two bathrooms.





Specifications

- Two bedroom split-level apartment
- Reception/Kitchen, two en-suite Bathrooms
- Set within Camden Square conservation area
- Bespoke hand built Kitchen





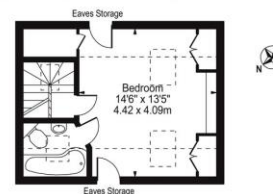


Price: | EPC: C

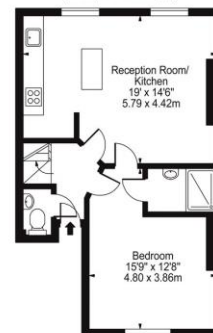
South Villas, NW1

Approx. Gross Internal Area 795 Sq Ft - 73.86 Sq M
(Including Restricted Height Area)

Approx. Gross Internal Area 690 Sq Ft - 64.10 Sq M
(Excluding Restricted Height Area)



Third Floor
(276 Sq Ft - 25.64 Sq M)



Second Floor
(519 Sq Ft - 48.22 Sq M)

For Illustration Purposes Only - Not To Scale

This floor plan should be used as a general outline for guidance only and does not constitute in whole or in part an offer or contract.
Any intending purchaser or lessee should satisfy themselves by inspection, searches, enquiries and full survey as to the correctness of each statement.
Any areas, measurements or distances quoted are approximate and should not be used to value a property or be the basis of any sale or let.

South Villas, NW1

Approximate gross Internal area
519Sq.Ft. p/m

This plan is for layout guidance only. Not drawn to scale unless stated. Windows and door openings approximate. Whilst every care is taken in the preparation of this plan, please check all dimensions, shapes and compass bearings before making decisions reliant upon them.

Location

South Villas is ideally situated moments from the highly desirable Camden Square, close to local amenities and excellent transport links.

Chestertons Camden & Primrose Hill
99-101 Parkway
London, NW1

02072673574
camdentownlettingsusers@chestertons.
chestertons.co.uk

Chesterton Global Ltd trading as Chestertons for themselves and for the vendor of this property whose agents they are, give notice that (i) these particulars do not constitute any part of an offer or contract, (ii) all statements contained within these particulars are made without responsibility on the part of Chestertons or the vendor, (iii) whilst made in good faith, none of the statements contained within these particulars are to be relied upon as a statement or representation of fact, (iv) any intending purchasers must satisfy themselves by inspection or otherwise as to the correctness of each of the statements contained within these particulars, (v) the vendor does not make or give either Chestertons or any person in their employment any authority to make or give representation or warranty whatsoever in relation to this property. Wide angle lenses may be used. ©Copyright Chestertons | Chesterton Global Ltd | Registered Office 40 Connaught Street, Hyde Park, London W2 2AB Registered Company Number 05334580.

