

CAMDEN ROAD, NW1 9AA

£3,500pm

Available 2nd September 2025

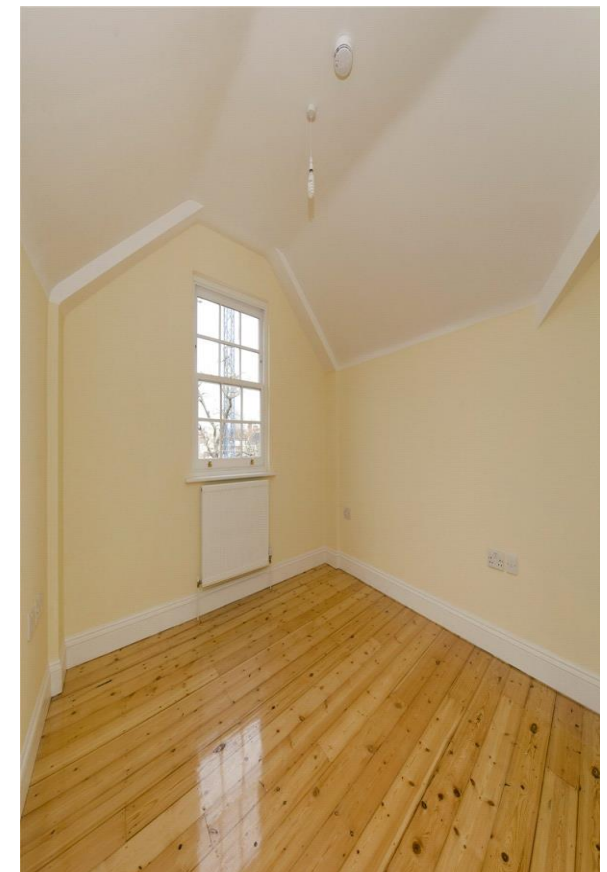
LONDON NW1

CHESTERTONS

CAMDEN ROAD

This extremely spacious three double bedroom apartment is situated on the top two floors within this impressive period conversion. The property comprises; open plan reception room, three double bedrooms and two bathrooms.





Specifications

- Modern 3 Bedroom maisonette arranged over the 2nd & 3rd floors
- Open-Plan Reception/Kitchen, Bathroom, Shower/Wet Room & WC
- Proximity to Kentish Town, Caledonian Road & Camden
- Set within period building with ample storage throughout





CAMDEN ROAD

LONDON NW1





Price: | EPC: D

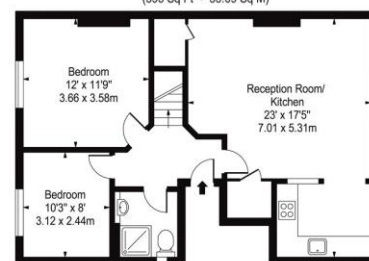
Camden Road, NW1

Approximate Gross Internal Area 1300 sq ft / 120 sq m
(Including Storage & Restricted Height Area)

Approximate Gross Internal Area 1140 sq ft / 105 sq m
(Excluding Storage & Restricted Height Area)



Third Floor
(593 Sq Ft - 55.09 Sq M)



Second Floor
(707 Sq Ft - 65.68 Sq M)
For Illustration Purposes Only - Not To Scale

This floor plan should be used as a general outline for guidance only and does not constitute in whole or in part an offer or contract.
Any intending purchaser or lessee should satisfy themselves by inspection, searches, enquiries and full survey as to the correctness of each statement.
Any areas, measurements or distances quoted are approximate and should not be used to value a property or be the basis of any sale or let.

Camden Road, NW1

Approximate gross Internal area
0.0 sq m / ∞/Sq.Ft. p/m

This plan is for layout guidance only. Not drawn to scale unless stated. Windows and door openings approximate. Whilst every care is taken in the preparation of this plan, please check all dimensions, shapes and compass bearings before making decisions reliant upon them.

Location

{Please type the description manually}

Chestertons Camden & Primrose Hill
99-101 Parkway
London, NW1

02072673574
camdentownlettingsusers@chestertons.
chestertons.co.uk

Chesterton Global Ltd trading as Chestertons for themselves and for the vendor of this property whose agents they are, give notice that (i) these particulars do not constitute any part of an offer or contract, (ii) all statements contained within these particulars are made without responsibility on the part of Chestertons or the vendor, (iii) whilst made in good faith, none of the statements contained within these particulars are to be relied upon as a statement or representation of fact, (iv) any intending purchasers must satisfy themselves by inspection or otherwise as to the correctness of each of the statements contained within these particulars, (v) the vendor does not make or give either Chestertons or any person in their employment any authority to make or give representation or warranty whatsoever in relation to this property. Wide angle lenses may be used. ©Copyright Chestertons | Chesterton Global Ltd | Registered Office 40 Connaught Street, Hyde Park, London W2 2AB Registered Company Number 05334580.

