



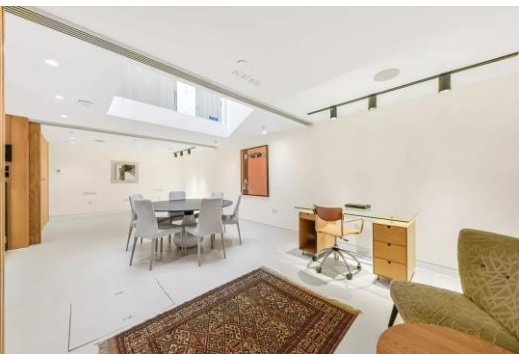
Belmont Street

London, NW1

£7,367 per month
(£1,700.08 per week)

The property is situated over three floors. Comprising of an open plan kitchen living area, three en-suite bathrooms, a retractable glass roof and a lighting system, controlled by numerous tablets around the property.

CHESTERTONS



Belmont Street

London, NW1

- Architecturally Designed Townhouse House
- Four Double Bedrooms
- Three Bathrooms
- Study
- Natural Light
- Retractable Glass Roof System



This exquisite three double bedroom, three bathroom architecturally designed townhouse.

The property is situated over three floors. Comprising of an open plan kitchen living area, three en-suite bathrooms, a retractable glass roof and a lighting system, controlled by numerous tablets around the property.

This impressive house further benefits; an abundance of natural light, contemporary staircase as well as high specification fixtures and fittings.

Minimum Term: months
Deposit Required: £10,200.46
Local Authority: Camden
Council Tax Band: H
EPC Rating: B
Furnished, Part Furnished, Unfurnished

Energy Efficiency Rating		
	Current	Potential
Very energy efficient - lower running costs		
A (94-100)		
B (81-93)	88	90
C (69-80)		
D (55-68)		
E (39-54)		
F (21-38)		
G (1-20)		
Not energy efficient - higher running costs		
England, Scotland & Wales EU Directive 2002/91/EC		

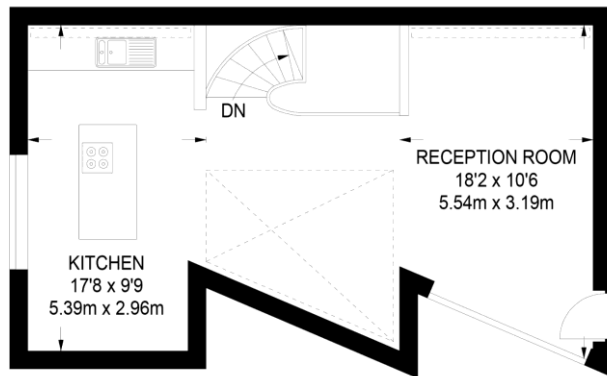
Chestertons Camden & Primrose Hill Lettings

99-101 Parkway
 London
 NW1 7PP
camdentownlettingsusers@chestertons.co.uk
 02072673574
chestertons.co.uk

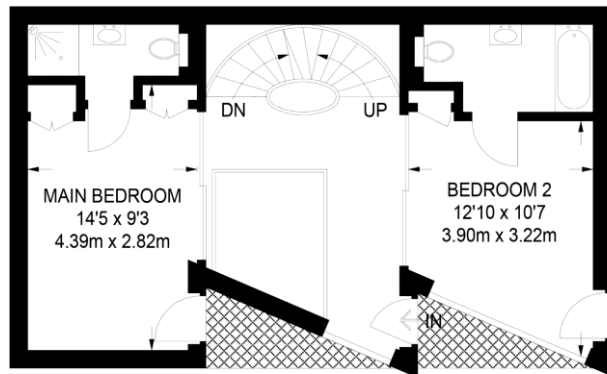
Additional tenant charges apply (fees apply to non-AST tenancies only)
 Tenancy Agreement Fee: £300
 References per Tenant/Guarantor: £60
 Inventory check (approx. £100 – £250 inc. VAT)
chestertons.co.uk/property-to-rent/applicable-fees



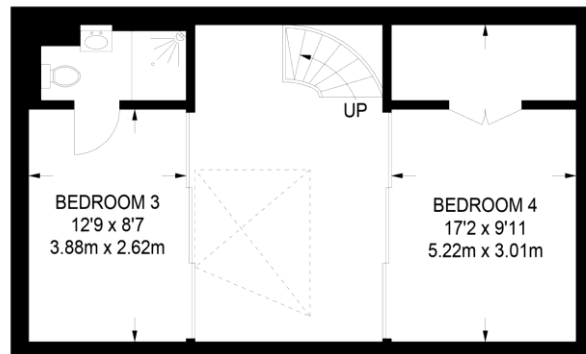
= REDUCED HEADROOM
BELOW 1.5 m / 5'0



FIRST FLOOR
440 SQ FT / 40.9 SQ M



GROUND FLOOR
447 SQ FT / 41.5 SQ M



LOWER GROUND FLOOR
453 SQ FT / 42.1 SQ M

APPROXIMATE GROSS INTERNAL AREA
1340.32 SQ FT / 124.5 SQ M
OUTDOOR AREA = 53.34 SQ FT / 4.95 SQ M
TOTAL = 1393.66 SQ FT / 129.45 SQ M

This plan has been drawn for illustrative and identification purposes only.

