

# LYME STREET

---

LONDON NW1

CHESTERTONS

# LYME STREET

Set over the first and second floor of a period conversion it enjoys lovely period features and will make a wonderful home. Lyme Street is a quiet residential street in the heart of Camden ideally situated close to the local shops, bars & restaurants





## Specifications









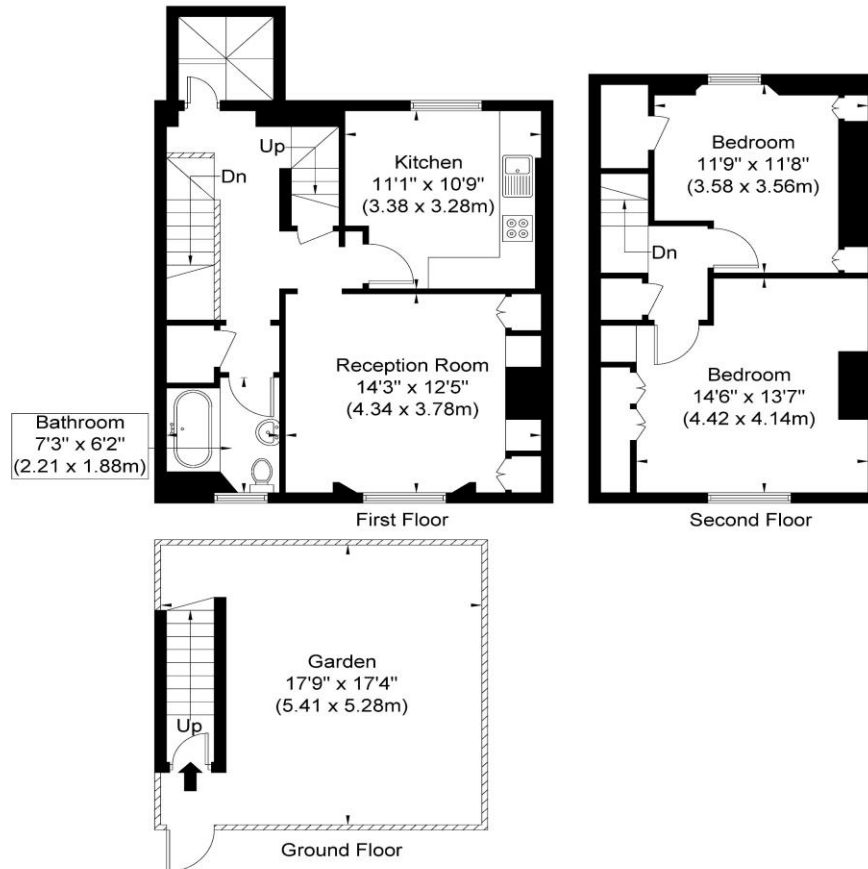






## Lyme Street, NW1 0EE

Approx. Gross Internal Area = 897 sq ft / 83.37 sq m



Ref

Copyright THEBLÉUPLAN

Disclaimer : Floor plan measurements are approximate and are for illustrative purposes only. While we do not doubt the floor plan accuracy and completeness, you or your advisors should conduct a careful, independent investigation of the property in respect of monetary valuation.



Chestertons Camden & Primrose Hill  
99-101 Parkway  
London, NW1

02072673574  
camdentownlettingsusers@chestertons.  
chestertons.co.uk

Chesterton Global Ltd trading as Chestertons for themselves and for the vendor of this property whose agents they are, give notice that (i) these particulars do not constitute any part of an offer or contract, (ii) all statements contained within these particulars are made without responsibility on the part of Chestertons or the vendor, (iii) whilst made in good faith, none of the statements contained within these particulars are to be relied upon as a statement or representation of fact, (iv) any intending purchasers must satisfy themselves by inspection or otherwise as to the correctness of each of the statements contained within these particulars, (v) the vendor does not make or give either Chestertons or any person in their employment any authority to make or give representation or warranty whatsoever in relation to this property. Wide angle lenses may be used. ©Copyright Chestertons | Chesterton Global Ltd | Registered Office 40 Connaught Street, Hyde Park, London W2 2AB Registered Company Number 05334580.

