

# ROCHESTER MEWS

£2,150pcm

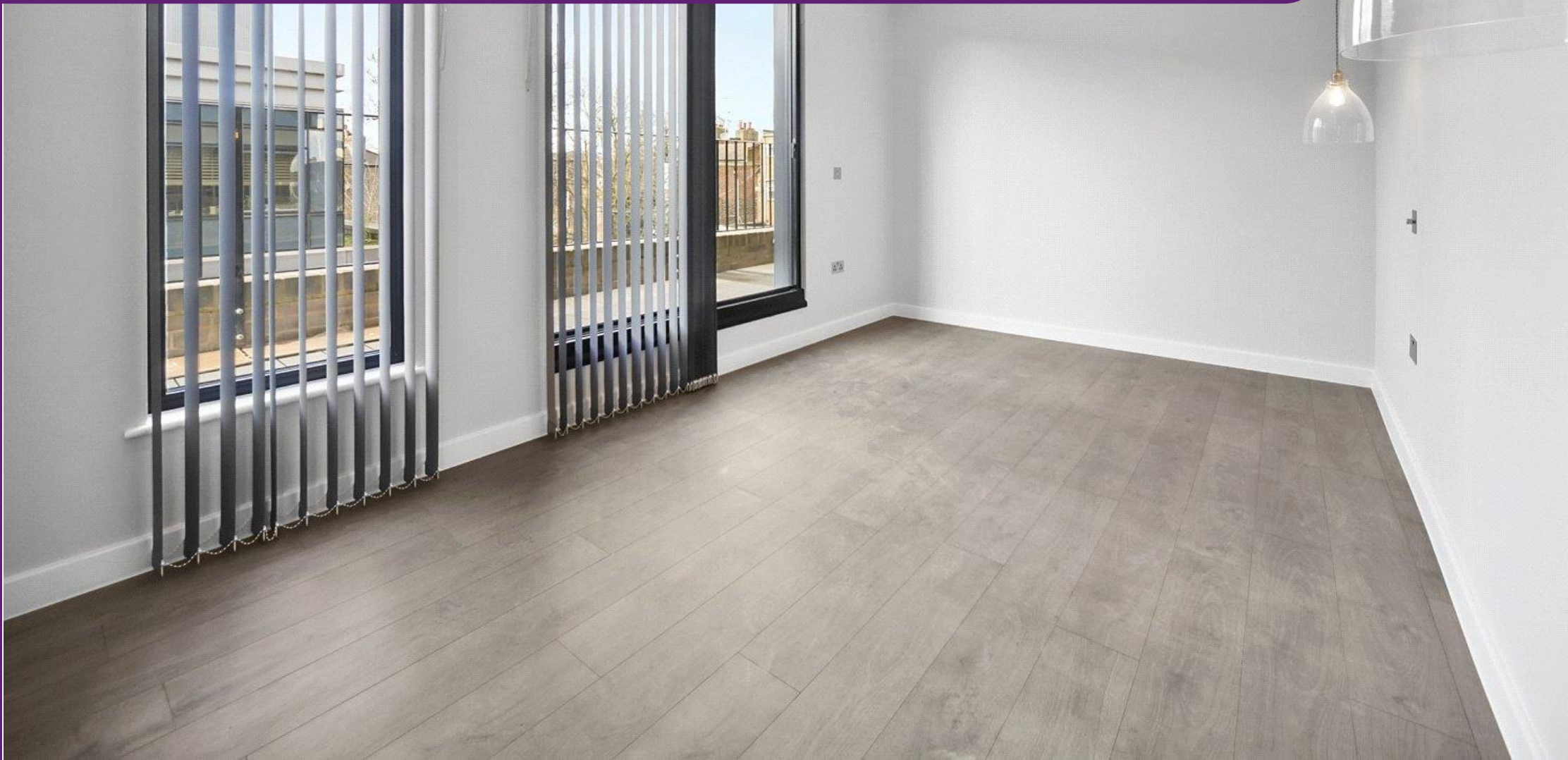
---

LONDON NW1

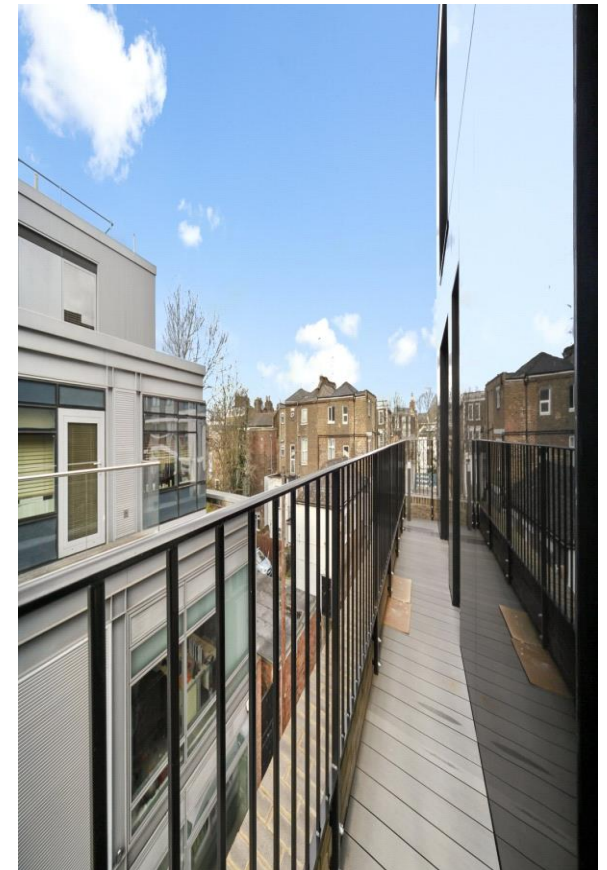
CHESTERTONS

# ROCHESTER MEWS

This spacious one-bedroom apartment is located on the second floor of an impressive mews development. The property features a generous open-plan kitchen and reception room, along with a separate, well-appointed bathroom.







## Specifications

- Spectacular development
- One double bedrooms
- Contemporary bathroom
- Kitchen with integrated white goods and appliances
- Open plan reception
- Beautiful terrace











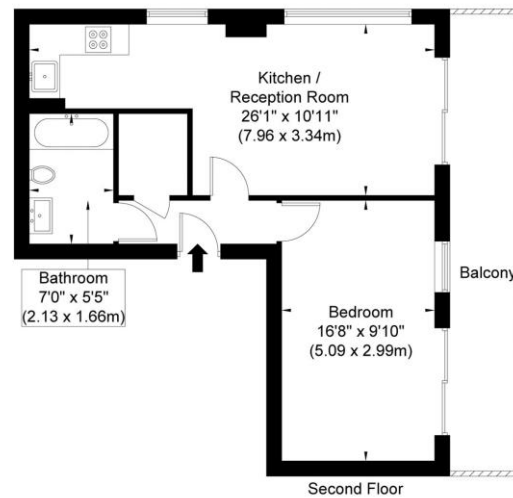




Price: | EPC: B

**Rochester House 16 Rochester  
Mews London NW1 9JB**

Approx. Gross Internal Area = 505 sq ft / 46.9 sq m



Ref

Copyright THEBLÉUPLAN

Disclaimer : Floor plan measurements are approximate and are for illustrative purposes only. While we do not doubt the floor plan accuracy and completeness, you or your advisors should conduct a careful, independent investigation of the property in respect of monetary valuation.

**Rochester Mews, NW1**

Approximate gross Internal area  
46.9 sq m / £4.26/Sq.Ft. p/m

This plan is for layout guidance only. Not drawn to scale unless stated. Windows and door openings approximate. Whilst every care is taken in the preparation of this plan, please check all dimensions, shapes and compass bearings before making decisions reliant upon them.

## Location

Rochester Mews is ideally positioned just moments from the vibrant amenities of Camden High Street and within easy reach of both Camden Town Underground and Camden Road Overground stations, providing excellent transport links.

Chestertons Camden & Primrose Hill  
99-101 Parkway  
London, NW1

02072673574  
camdentownlettingsusers@chestertons.  
chestertons.co.uk

Chesterton Global Ltd trading as Chestertons for themselves and for the vendor of this property whose agents they are, give notice that (i) these particulars do not constitute any part of an offer or contract, (ii) all statements contained within these particulars are made without responsibility on the part of Chestertons or the vendor, (iii) whilst made in good faith, none of the statements contained within these particulars are to be relied upon as a statement or representation of fact, (iv) any intending purchasers must satisfy themselves by inspection or otherwise as to the correctness of each of the statements contained within these particulars, (v) the vendor does not make or give either Chestertons or any person in their employment any authority to make or give representation or warranty whatsoever in relation to this property. Wide angle lenses may be used. ©Copyright Chestertons | Chesterton Global Ltd | Registered Office 40 Connaught Street, Hyde Park, London W2 2AB Registered Company Number 05334580.

