



Park Village Mews

Regents Park, NW1

£10,833.33 per month
(£2,500.00 per week)

A stunning four double bedroom townhouse situated moments from Regents Park in a gated development just off the prestigious Albany Street.

CHESTERTONS



Park Village Mews

Regents Park, NW1

- Stunning townhouse
- Private gated entrance
- Three double bedrooms
- Three contemporary bathrooms
- Exposed wooden beams
- Private patio area
- Private Parking

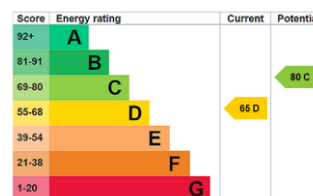


A stunning four double bedroom townhouse situated moments from Regents Park in a gated private development with a lot of interesting history.

This unique property spans three floors and boasts a bright and airy reception room leading onto a private patio area, large kitchen area with integrated white goods and appliances, spacious master bedroom with en-suite, two further family bathrooms, separate study room, private patio area and off street parking.

Situated only moments from both Regents Park, Primrose Hill and the many amenities this desirable area has to offer.

Minimum Term: 12 months
Deposit Required: £0.00
Local Authority: Camden
Council Tax Band: G
EPC Rating: D
Unfurnished



Chestertons Camden & Primrose Hill Lettings

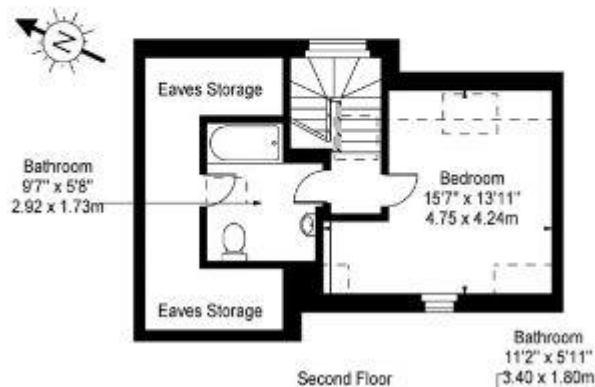
99-101 Parkway
 London
 NW1 7PP
camdentownlettingsusers@chestertons.co.uk
 02072673574
chestertons.co.uk

Additional tenant charges apply (fees apply to non-AST tenancies only)
 Tenancy Agreement Fee: £300
 References per Tenant/Guarantor: £60
 Inventory check (approx. £100 – £250 inc. VAT)
chestertons.co.uk/property-to-rent/applicable-fees

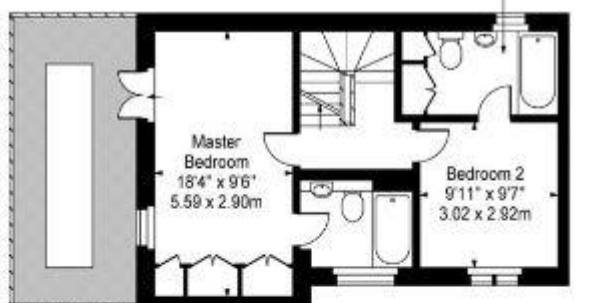


Ground Floor

**Park Village Mews,
Albany Street, Regent's Park, NW1**



Second Floor



First Floor

Approx Gross Internal Area 1741 Sq Ft - 161.95 Sq M
Approx Floor Area Including Restricted Heights 1912 Sq Ft - 177.86 Sq M

For Illustration Purposes Only - Not To Scale Floor Plan by www.nogaphotostudio.com Ref: No.31015

This floor plan should be used as a general outline for guidance only. Any intending purchaser or lessee should satisfy themselves by inspection searches, enquiries and full survey as to the correctness of each statement. Any areas, measurements or distances quoted are approximate and should not be used to value a property or be the basis of any sale or let.

