

GLOUCESTER AVENUE

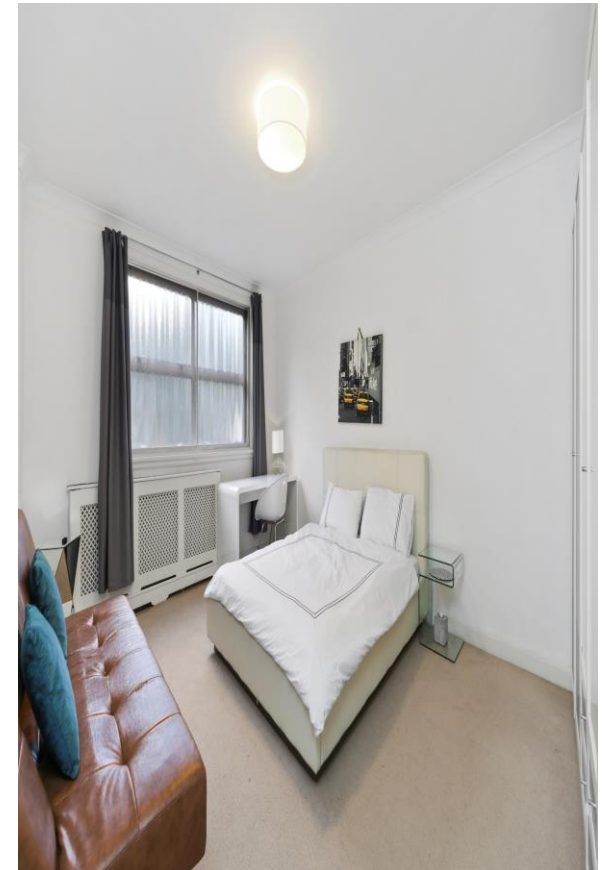
LONDON NW1

CHESTERTONS

GLOUCESTER AVENUE

This stunning three bedroom apartment is situated on the Raised Ground Floor within this popular purpose built development. The property comprises; dual aspect reception room, modern kitchen, three double bedrooms and two bathrooms.





Specifications

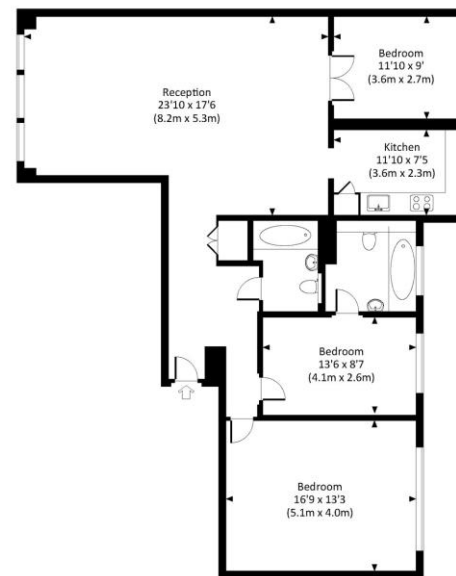
- Spacious 2/3 Bedroom apartment within sought-after development
- Dual Aspect Reception, Kitchen, En-Suite & Guest Bathroom
- Proximity to Primrose Hill and Camden Town's amenities & transport
- Suitably located to the green open spaces of Regents Park





Price: | EPC: D

DARWIN COURT, NW1
Approx. gross internal area
1239 Sq.Ft. / 115.1 Sq.M.



GROUND FLOOR

141 measurements have been made in accordance with RICS Code of Measuring Practice which are approximate only and only for guidance purposes. For the avoidance of doubt, planning, zoning, height and other restrictions may apply. All dimensions are approximate. © 2017 New & London Properties Ltd. 020 7491 0000

Gloucester Avenue, NW1

Approximate gross Internal area
0.0 sq m / ∞/Sq.Ft. p/m

This plan is for layout guidance only. Not drawn to scale unless stated. Windows and door openings approximate. Whilst every care is taken in the preparation of this plan, please check all dimensions, shapes and compass bearings before making decisions reliant upon them.

Location

{Please type the description manually}

Chestertons Camden & Primrose Hill
99-101 Parkway
London, NW1

02072673574
camdentownlettingsusers@chestertons.
chestertons.co.uk

Chesterton Global Ltd trading as Chestertons for themselves and for the vendor of this property whose agents they are, give notice that (i) these particulars do not constitute any part of an offer or contract, (ii) all statements contained within these particulars are made without responsibility on the part of Chestertons or the vendor, (iii) whilst made in good faith, none of the statements contained within these particulars are to be relied upon as a statement or representation of fact, (iv) any intending purchasers must satisfy themselves by inspection or otherwise as to the correctness of each of the statements contained within these particulars, (v) the vendor does not make or give either Chestertons or any person in their employment any authority to make or give representation or warranty whatsoever in relation to this property. Wide angle lenses may be used. ©Copyright Chestertons | Chesterton Global Ltd | Registered Office 40 Connaught Street, Hyde Park, London W2 2AB Registered Company Number 05334580.

