



Gloucester Avenue

Primrose Hill, NW1

£1,200 per week
(£5,200 pcm)

Video Available Located only moments from Regents Park is this fantastic 3 Bedroom apartment situated on the 2nd floor offering approx. 1535sqft of lateral living accommodation with access to a small Balcony.

CHESTERTONS



Gloucester Avenue

Primrose Hill, NW1

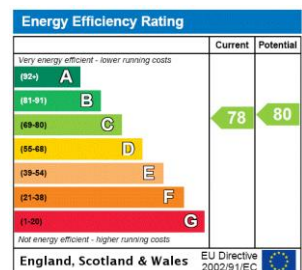
- Modern 3 Bedroom purpose built apartment
- Living/Kitchen, 2 En-Suite Bathrooms, Guest Shower
- Located only moments from Regents Park
- Balcony, underground parking, concierge inclusive



Video Available Located only moments from Regents Park is this fantastic 3 Bedroom apartment situated on the 2nd floor offering approx. 1535sqft of lateral living accommodation with access to a small Balcony. The Property is set within a gated development with 24 hour concierge and includes access to a communal landscaped courtyard. Accommodation comprises of; spacious open-plan Living with wood floors, 2 Bedrooms with fitted wardrobes and en-suites, additional 3rd bedroom, guest shower room and separate underground parking. EPC Rating C (new report being produced)

Tenure: To be advised
Furnished

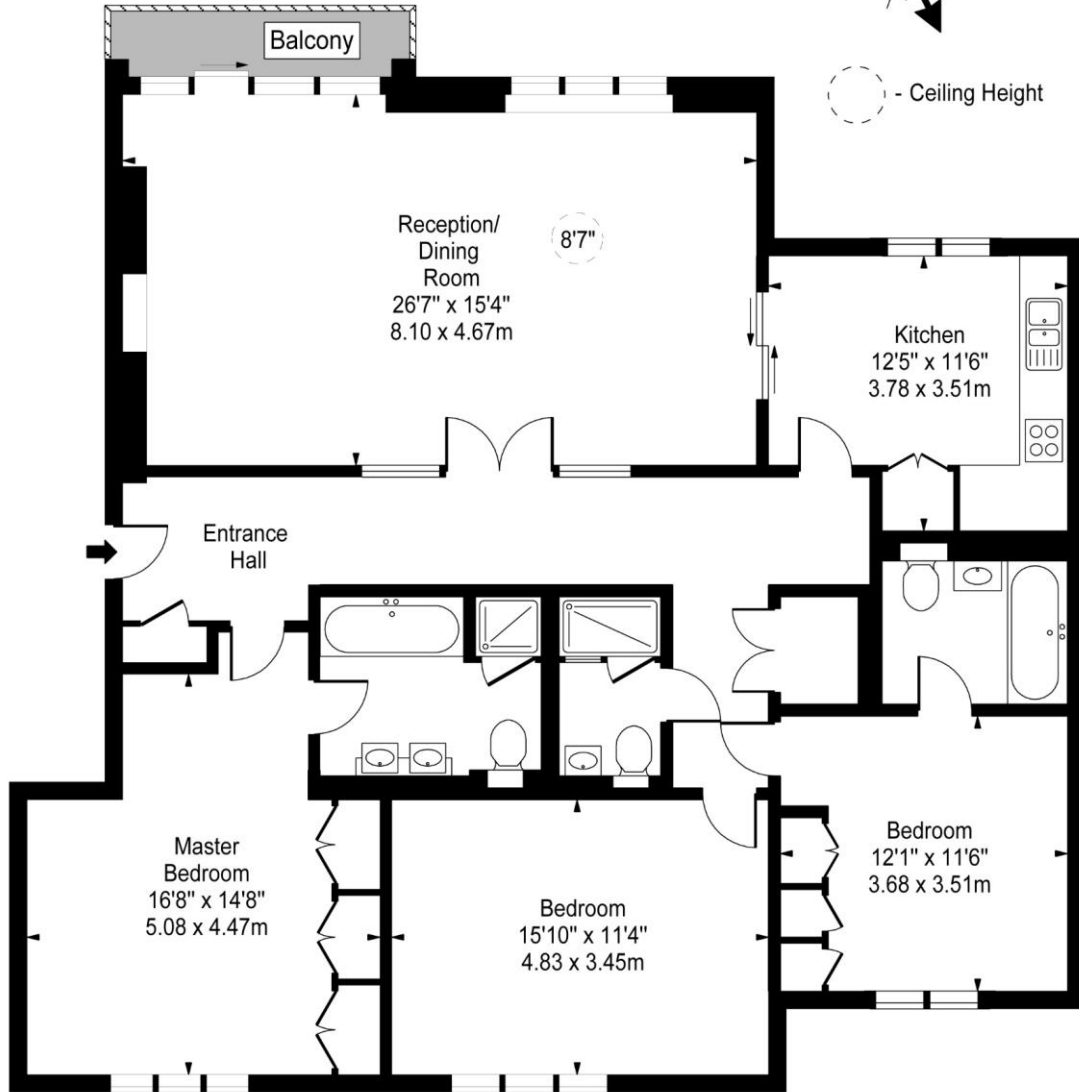
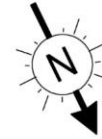
Additional tenant charges apply (fees apply to non-AST tenancies only)
 Tenancy Agreement Fee: £300
 References per Tenant/Guarantor: £60
 Inventory check (approx. £100 – £250 inc. VAT)
[chestertons.com/property-to-rent/applicable-fees](https://www.chestertons.com/property-to-rent/applicable-fees)



Chestertons Camden & Primrose Hill Lettings

99-101 Parkway
 London
 NW1 7PP
lettings.camden@chestertons.com
 02072673574
[chestertons.com](https://www.chestertons.com)

**Holyrood Court,
Gloucester Avenue**



Second Floor

Gross Internal Area - 1535 Sq Ft - 142.60 Sq M

Approx Gross Internal Area 1535 Sq Ft - 142.60 Sq M

For Illustration Purposes Only - Not To Scale

www.goldlens.co.uk

Ref. No. 012008M

