



# St Pancras Way

Camden, NW1

£2,700 per month  
(£623.08 per week)

This delightful two double bedroom maisonette is situated over the Ground and Garden levels within this impressive period conversion. The property comprises; spacious open plan reception room, two double bedrooms, bathroom and guest W.C.



# St Pancras Way

## Camden, NW1

- 2 Bedroom maisonette with private Patio Garden
- Open-Plan Reception with Eat-In Kitchen, Bathroom & WC
- Moments from Camden Road over ground station
- Features include high ceilings and hardwood flooring

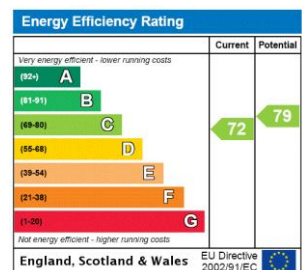


This delightful two double bedroom maisonette is situated over the Ground and Garden levels within this impressive period conversion. The property comprises; spacious open plan reception room, two double bedrooms, bathroom and guest W.C.

This impressive apartment further benefits; strip wood flooring, spacious accommodation throughout and private patio garden. The property is offered furnished and available July.

St Pancras Way is ideally located close to Camden Road over ground and Camden Town's local amenities and underground station.

**Minimum Term:** months  
**Deposit Required:** £0.00  
**Local Authority:**  
**Council Tax Band:**  
**EPC Rating:** C  
**Furnished, Part Furnished, Unfurnished**



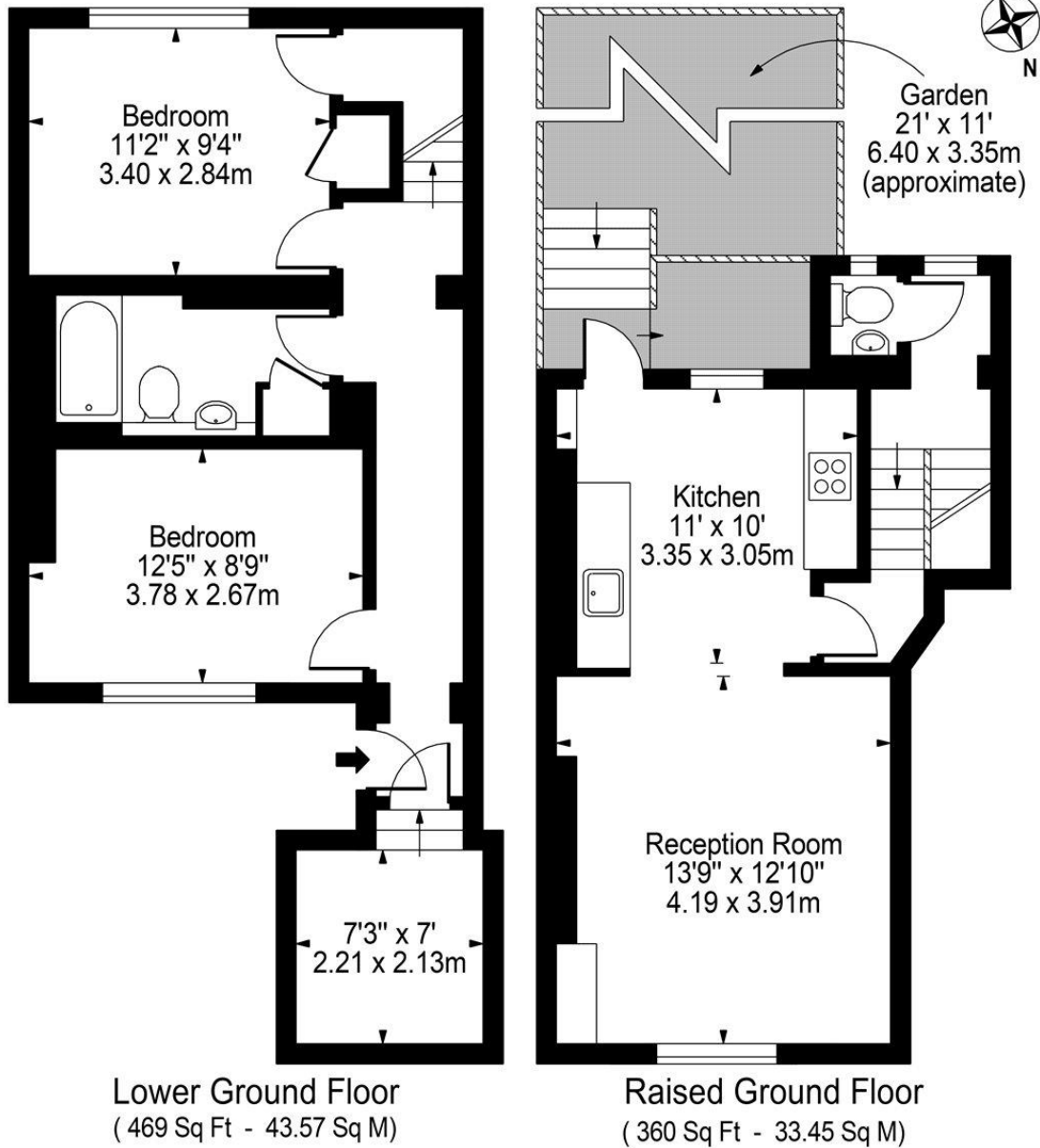
### Chestertons Camden & Primrose Hill Lettings

99-101 Parkway  
 London  
 NW1 7PP  
 lettings.camden@chestertons.co.uk  
 02072673574  
 chestertons.co.uk

Additional tenant charges apply (fees apply to non-AST tenancies only)  
 Tenancy Agreement Fee: £300  
 References per Tenant/Guarantor: £60  
 Inventory check (approx. £100 – £250 inc. VAT)  
 chestertons.co.uk/property-to-rent/applicable-fees

# St. Pancras Way, NW1

Approx. Gross Internal Area 829 Sq Ft - 77.02 Sq M



For Illustration Purposes Only - Not To Scale

This floor plan should be used as a general outline for guidance only and does not constitute in whole or in part an offer or contract. Any intending purchaser or lessee should satisfy themselves by inspection, searches, enquiries and full survey as to the correctness of each statement. Any areas, measurements or distances quoted are approximate and should not be used to value a property or be the basis of any sale or let.