



# St. Georges Terrace

Primrose Hill, NW1

£4,500 per month  
(£1,038.46 per week)

A stunning three bedroom maisonette perfectly situated on a cul-de-sac opposite Primrose Hill. Comprising of three bedrooms over two floors and with its own serene patio garden.

**CHESTERTONS**



# St. Georges Terrace

Primrose Hill, NW1

- Wooden Flooring
- Outside Space
- Modern
- Three Bedrooms
- Primrose Hill

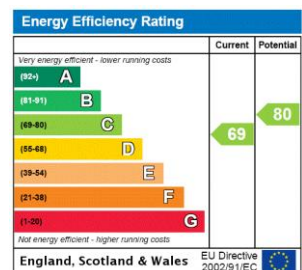


Short Let-A stunning three bedroom maisonette perfectly situated on a cul-de-sac opposite Primrose Hill. Comprising of three bedrooms over two floors and with its own serene patio garden.

St. Georges Terrace is a situated near some of the more prestigious streets of Primrose Hill which boast a selection of high end boutique shops, cafes and restaurants. Chalk Farm Underground Station (Northern Line) is close by for excellent links into the city and West End.

Available now. All bills included. (Wi-fi Included)

**Minimum Term:** 6 months  
**Deposit Required:** £6,230.77  
**Local Authority:** London Borough Of Camden  
**Council Tax Band:** F  
**EPC Rating:** C  
**Furnished**



### Chestertons Camden & Primrose Hill Lettings

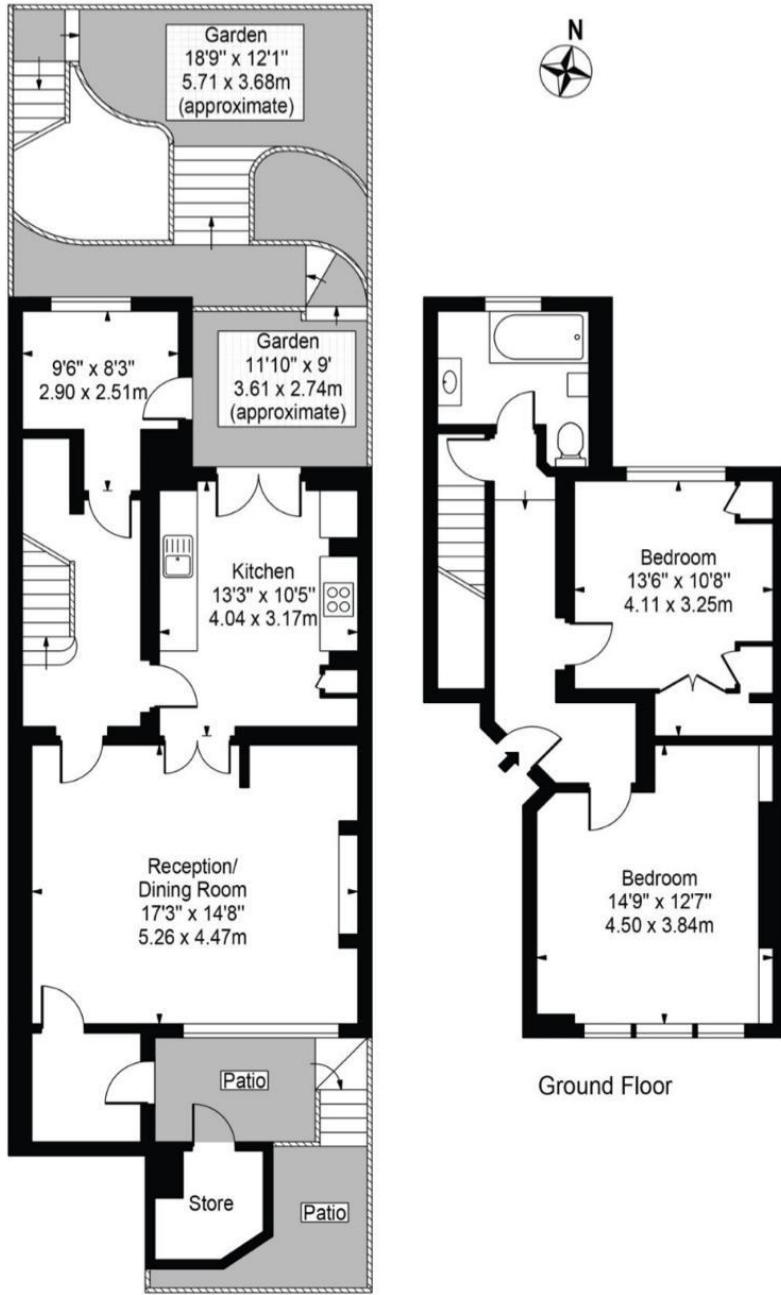
99-101 Parkway  
 London  
 NW1 7PP  
 camden@chestertons.co.uk  
 02072673574  
 chestertons.co.uk

Additional tenant charges apply (fees apply to non-AST tenancies only)  
 Tenancy Agreement Fee: £300  
 References per Tenant/Guarantor: £60  
 Inventory check (approx. £100 – £250 inc. VAT)  
 chestertons.co.uk/property-to-rent/applicable-fees

# St. Georges Terrace

Approx. Gross Internal Area 1081 Sq Ft - 100.43 Sq M  
(Excluding Store)

Approx. Gross Internal Area Of Store 28 Sq Ft - 2.60 Sq M



Lower Ground Floor

Ground Floor

For Illustration Purposes Only - Not To Scale

This floor plan should be used as a general outline for guidance only and does not constitute in whole or in part an offer or contract. Any intending purchaser or lessee should satisfy themselves by inspection, searches, enquiries and full survey as to the correctness of each statement. Any areas, measurements or distances quoted are approximate and should not be used to value a property or be the basis of any sale or let.

