



Camden Mews

Camden, NW1

£4,580 per month
(£1,056.92 per week)

This truly exceptional three bedroom, three bathroom newly developed Mews House within the Camden Square conservation area. The property comprises; open plan reception room, three double bedrooms and three bathrooms.



Camden Mews

Camden, NW1

- Newly developed 3 Bedroom mews house with 3 Terraces
- Open-Plan Living, 2 Shower Room (1 en-suite) & En-Suite Bathroom
- Situated within the Camden Square conservation area
- Secure bicycle storage, electric charging point & rear Garden

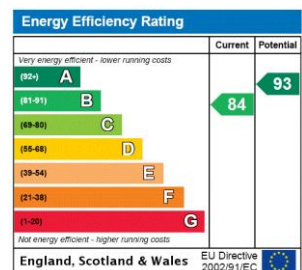


This truly exceptional three bedroom, three bathroom newly developed Mews House within the Camden Square conservation area. The property comprises; open plan reception room, three double bedrooms and three bathrooms.

This stunning house further benefits; wooden flooring, balconies, terrace, walk-in wardrobe, bicycle storage and electric charging point. The property is offered furnished and available August.

Camden Mews is ideally situated within the catchment area of the highly renowned Camden Girls School, moments from local amenities and close to excellent transport links.

Minimum Term: months
Deposit Required: £0.00
Local Authority: London Borough Of Camden
Council Tax Band: G
EPC Rating: B
Furnished

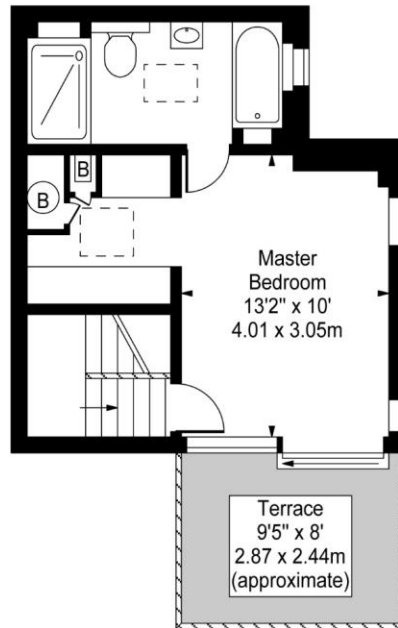


Chestertons Camden & Primrose Hill Lettings

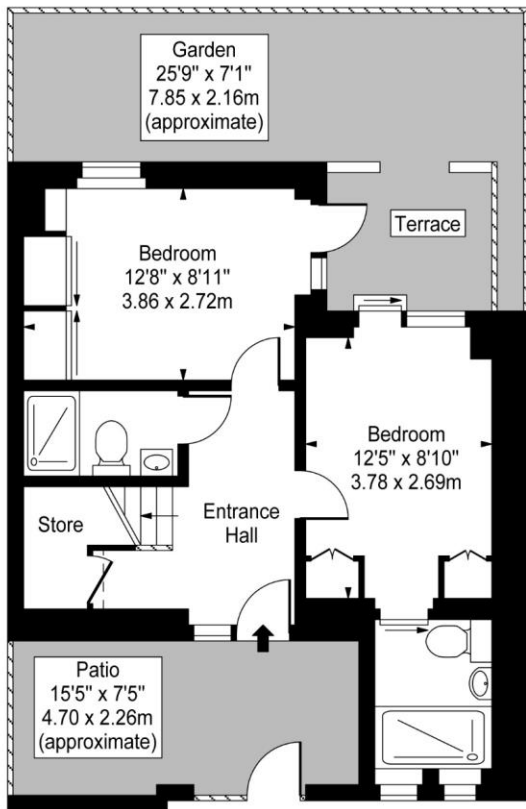
99-101 Parkway
 London
 NW1 7PP
 camden@chestertons.co.uk
 02072673574
 chestertons.co.uk

Additional tenant charges apply (fees apply to non-AST tenancies only)
 Tenancy Agreement Fee: £300
 References per Tenant/Guarantor: £60
 Inventory check (approx. £100 – £250 inc. VAT)
chestertons.co.uk/property-to-rent/applicable-fees

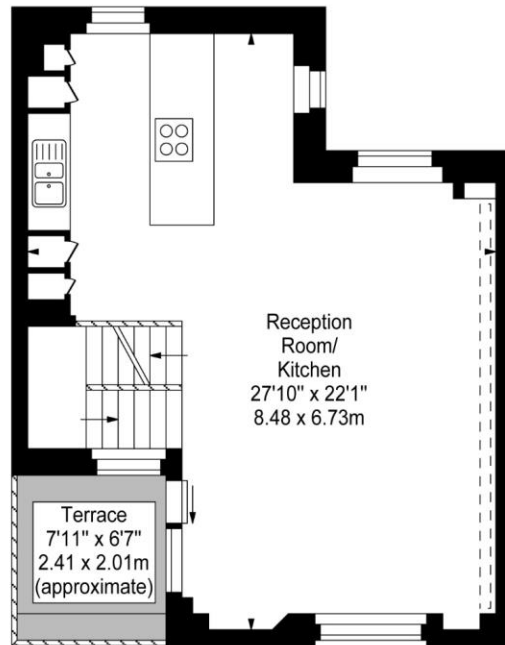
Camden Mews



Second Floor
Gross Internal Area - 297 Sq Ft - 27.59 Sq M



Ground Floor
Gross Internal Area - 418 Sq Ft - 38.83 Sq M



First Floor
Gross Internal Area - 480 Sq Ft - 44.59 Sq M

Approx Gross Internal Area 1195 Sq Ft - 111.01 Sq M

For Illustration Purposes Only - Not To Scale
www.goldlens.co.uk
Ref. No. 010178J

