



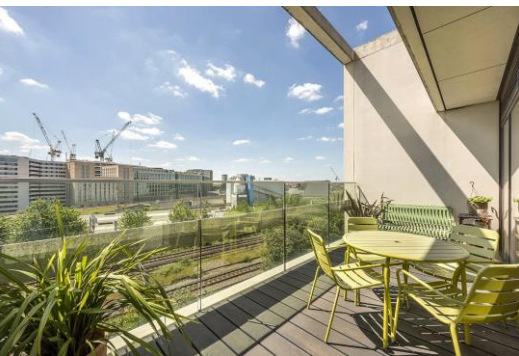
Broadfield Lane

London, NW1

£3,033.33 per month
(£700 per week)

A stunning two double bedroom apartment with the added benefit of two bathrooms and two balconies. In very close proximity to the popular Kings Cross.

CHESTERTONS



Broadfield Lane

London, NW1

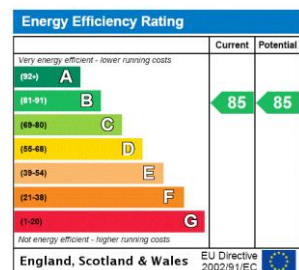
- South facing reception
- Two terraces
- Two bedrooms/two bathrooms
- Excellent location



A stunning two bedroom apartment on the 4th floor of a very smart new build block moments from Kings Cross. This stylish property is immaculately presented and boasts two bedrooms, two bathrooms and two terraces - one of which is south-facing and very spacious. Long lease and chain-free.

The property is very well located and offers great views across London. The location is perfect to take advantage of the fantastic amenities of Kings Cross. These include the fabulous Granary Square with its vast array of restaurants and bars and the unparalleled transport links of Kings Cross/St Pancras.

Minimum Term: months
Deposit Required: £3,500.00
Local Authority:
Council Tax Band: F
EPC Rating: B
Unfurnished



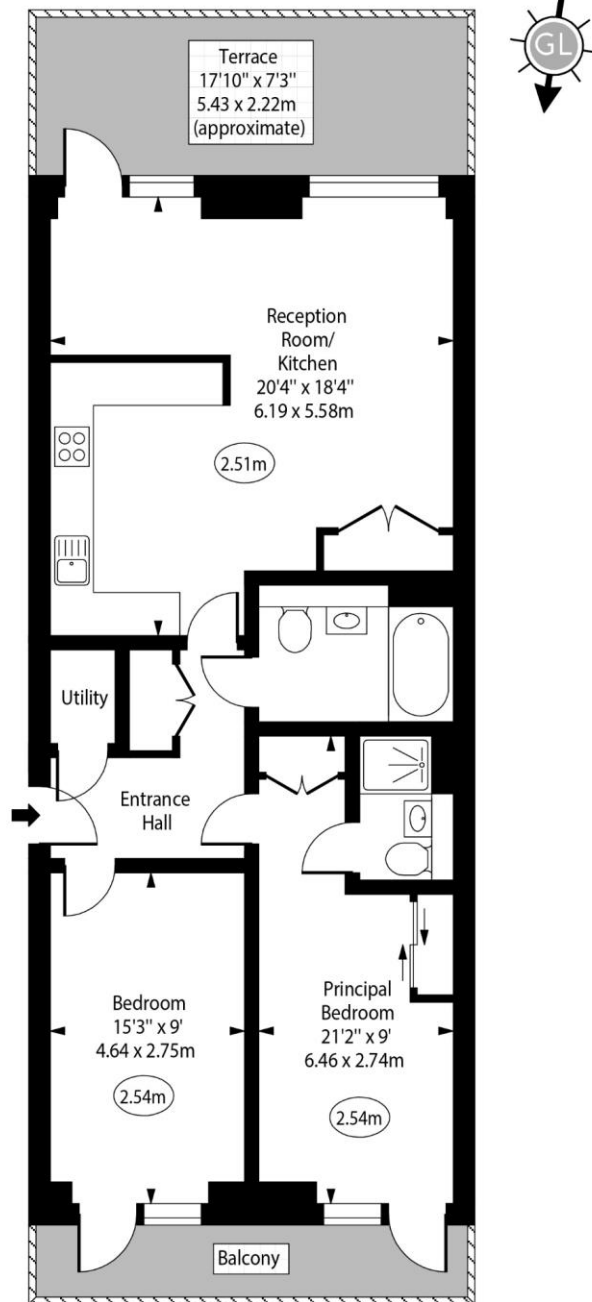
Chestertons Camden & Primrose Hill Lettings

99-101 Parkway
 London
 NW1 7PP
 lettings.camden@chestertons.com
 02072673574
 chestertons.com

Additional tenant charges apply (fees apply to non-AST tenancies only)
 Tenancy Agreement Fee: £300
 References per Tenant/Guarantor: £60
 Inventory check (approx. £100 – £250 inc. VAT)
 chestertons.com/property-to-rent/applicable-fees

Bradfield Lane

○ - Ceiling Height



Fourth Floor

Gross Internal Area - 837 Sq Ft - 77.76 Sq M

Approx Gross Internal Area 837 Sq Ft - 77.76 Sq M

For Illustration Purposes Only - Not To Scale

www.goldlens.co.uk

Ref. No. 017937R

