



Aldwych Buildings

Parker Mews, WC2B

£2,491.67 per month
(£575 per week)

Charming 1-bed apartment in Covent Garden. Modern, stylish, and peaceful. Fully furnished. Perfect for a professional or couple.

CHESTERTONS



Aldwych Buildings

Parker Mews, WC2B

- Excellent Transport Links
- Modern Interior Throughout
- Conveniently Located In The Heart Of London's West End
- Bright Second Floor Apartment

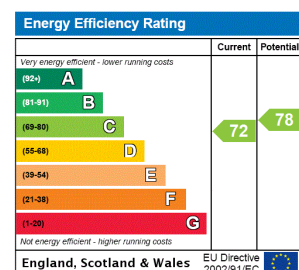


Presenting this charming and luxurious 1-bedroom apartment located on the 2nd floor of a period building in the heart of WC2. This stylish and modern property comes fully furnished, offering a sophisticated and peaceful retreat from the hustle and bustle of city life.

With a secluded and private feel, this apartment is perfect for those seeking a peaceful sanctuary in a bustling area. The property features a purpose-built design that maximises space and functionality, creating a cosy and inviting atmosphere.

Don't miss out on the opportunity to make this stylish and

Minimum Term: 12 months
Deposit Required: £2,875.00
Local Authority: Camden
Council Tax Band: C
EPC Rating: C
Furnished

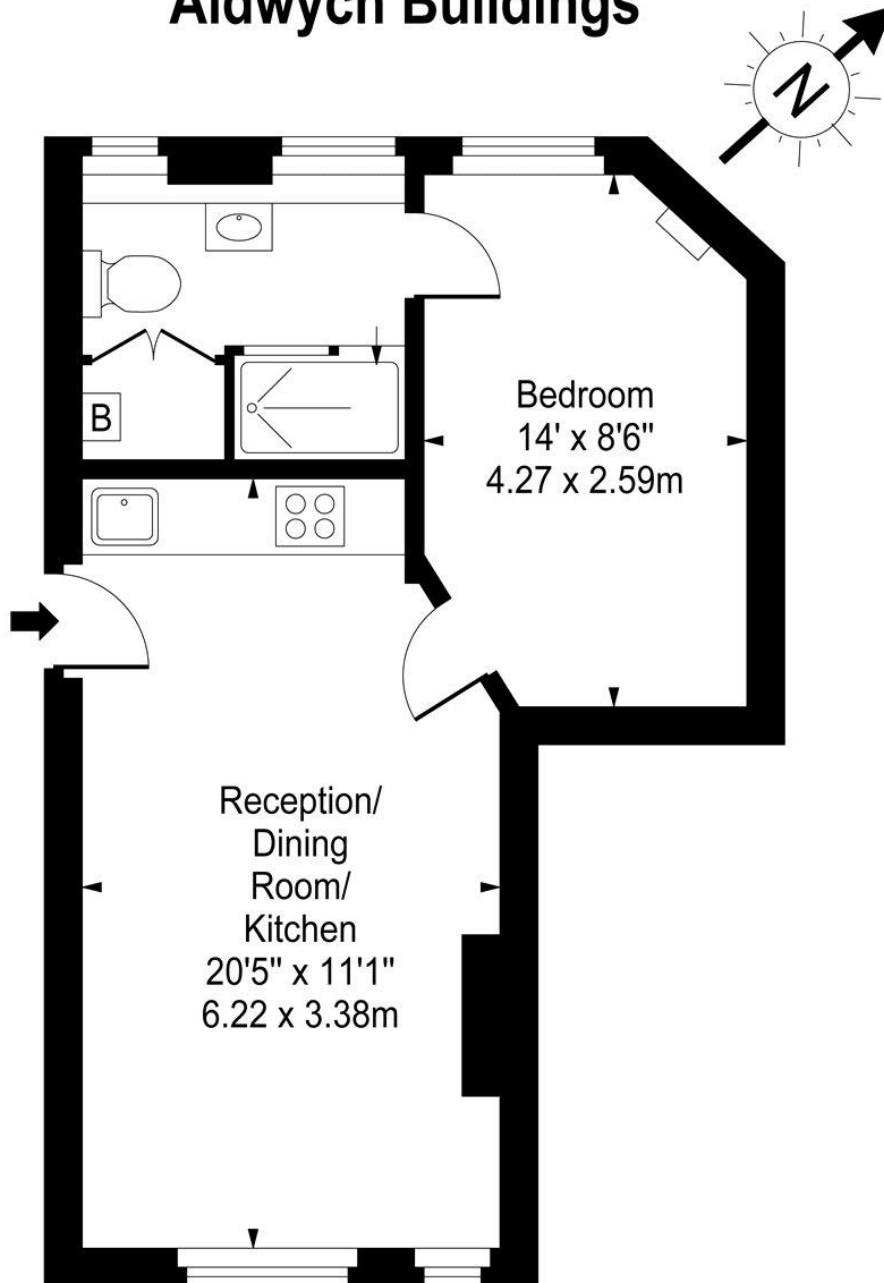


Chestertons Covent Garden Lettings

196 Shaftesbury Avenue
 Covent Garden
 London
 WC2H 8JF
 coventgardenlettingsusers@chestertons.co.uk
 02030408400
 chestertons.co.uk

Additional tenant charges apply (fees apply to non-AST tenancies only)
 Tenancy Agreement Fee: £300
 References per Tenant/Guarantor: £60
 Inventory check (approx. £100 – £250 inc. VAT)
 chestertons.co.uk/property-to-rent/applicable-fees

Aldwych Buildings



Second Floor

Approx Gross Internal Area **405 Sq Ft - 37.62 Sq M**

For Illustration Purposes Only - Not To Scale

www.goldlens.co.uk

Ref. No. 007786M

