



New Compton Street

Covent Garden, WC2H

£2,699.67 per month
(£623 per week)

A well presented ONE BEDROOM apartment flooded with natural light and offering far reaching views over Shaftesbury Avenue and St Giles church positioned on the top (7th) floor with lift access, of this centrally located development. EPC: D



New Compton Street

Covent Garden, WC2H

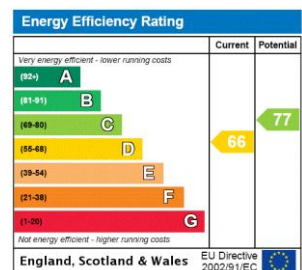
- Top floor with lift
- London skyline views
- Open plan living space
- Communal Gardens



A beautifully presented one bedroom apartment flooded with natural light and offering far reaching views over Shaftesbury Avenue and St Giles church positioned on the top (7th) floor with lift access, of this centrally located development.

The apartment comprises of a large open plan reception/kitchen, double bedroom, bathroom and access to communal gardens. EPC: D

Minimum Term: months
Deposit Required: £3,115.00
Local Authority: London Borough Of Camden
Council Tax Band: D
EPC Rating: D
Furnished

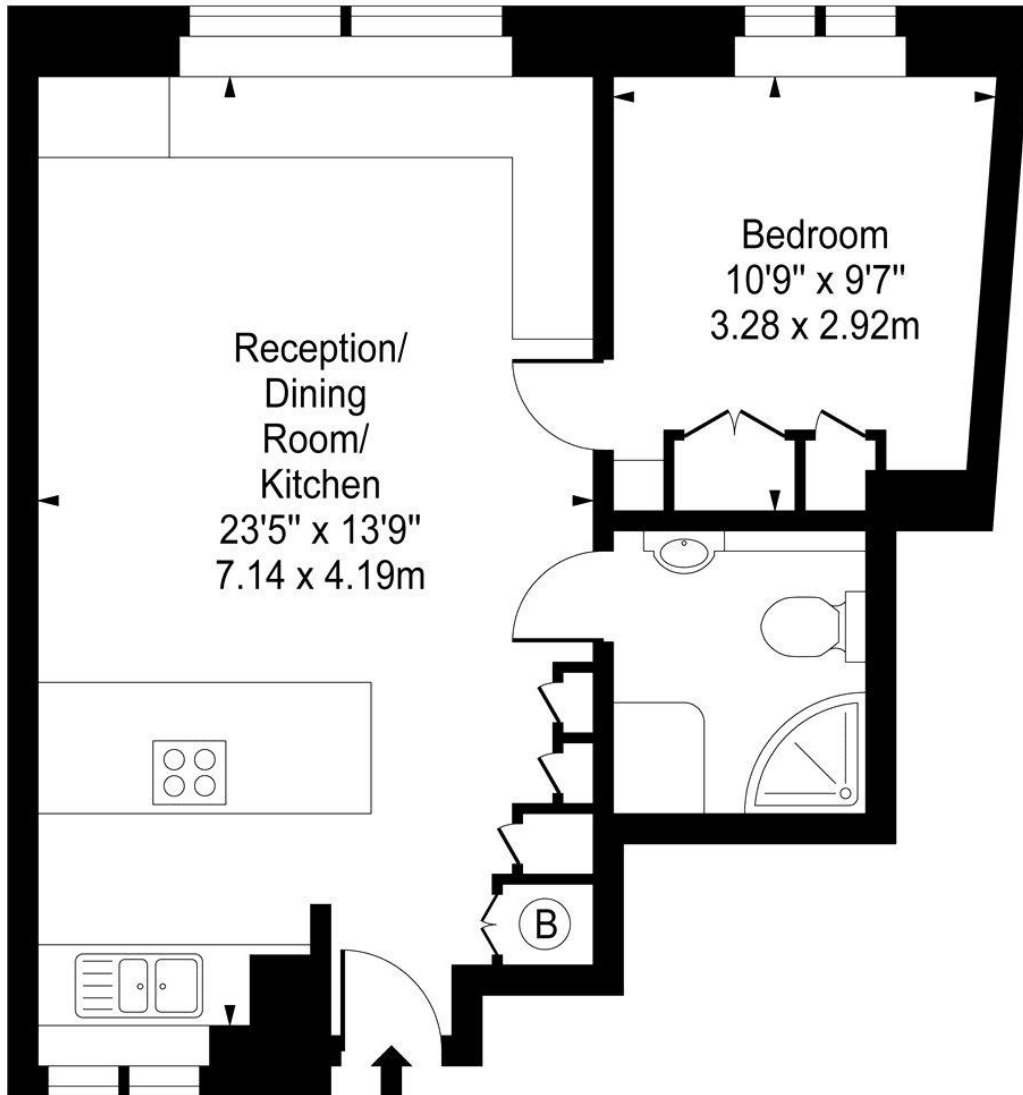
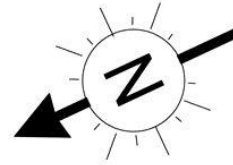


Chestertons Covent Garden Lettings

196 Shaftesbury Avenue
 Covent Garden
 London
 WC2H 8JF
 coventgarden@chestertons.co.uk
 02030408400
 chestertons.co.uk

Additional tenant charges apply (fees apply to non-AST tenancies only)
 Tenancy Agreement Fee: £300
 References per Tenant/Guarantor: £60
 Inventory check (approx. £100 – £250 inc. VAT)
chestertons.co.uk/property-to-rent/applicable-fees

New Compton Street



Seventh Floor

Approx Gross Internal Area **470 Sq Ft - 43.66 Sq M**

For Illustration Purposes Only - Not To Scale

www.goldlens.co.uk

Ref. No. 001534

