



Gower Street

Bloomsbury, WC1E

£3,033.33 per month
(£700 per week)

Boasting over 750 sq ft of living space, this two bedroom property is on the third floor of a period conversion on Gower Street. With two double bedrooms, large reception room, separate kitchen and bathroom.

CHESTERTONS



Gower Street

Bloomsbury, WC1E

- *NO TENANT FEES*
- Bright 2 bedroom apartment
- Separate kitchen
- Close to Tottenham Ct Road tube

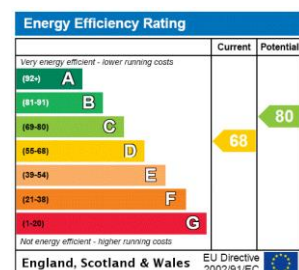


Boasting over 750 sq ft of living space, this two bedroom property is on the third floor of a period conversion on Gower Street. With two double bedrooms, large reception room, separate kitchen and bathroom.

Conveniently located for both Tottenham Court Road, Goodge Street and Warren Street tube stations for excellent transport links.

Walking distance to great shops and cafes of Fitzrovia and Bloomsbury, and excellent amenities on Tottenham Court Road.

Minimum Term: 12 months
Deposit Required: £3,500.00
Local Authority: London Borough Of Camden
Council Tax Band: E
EPC Rating: D
Part Furnished, Unfurnished



Chestertons Covent Garden Lettings

196 Shaftesbury Avenue
 Covent Garden
 London
 WC2H 8JF
 coventgardenlettingsusers@chestertons.co.uk
 02030408400
 chestertons.co.uk

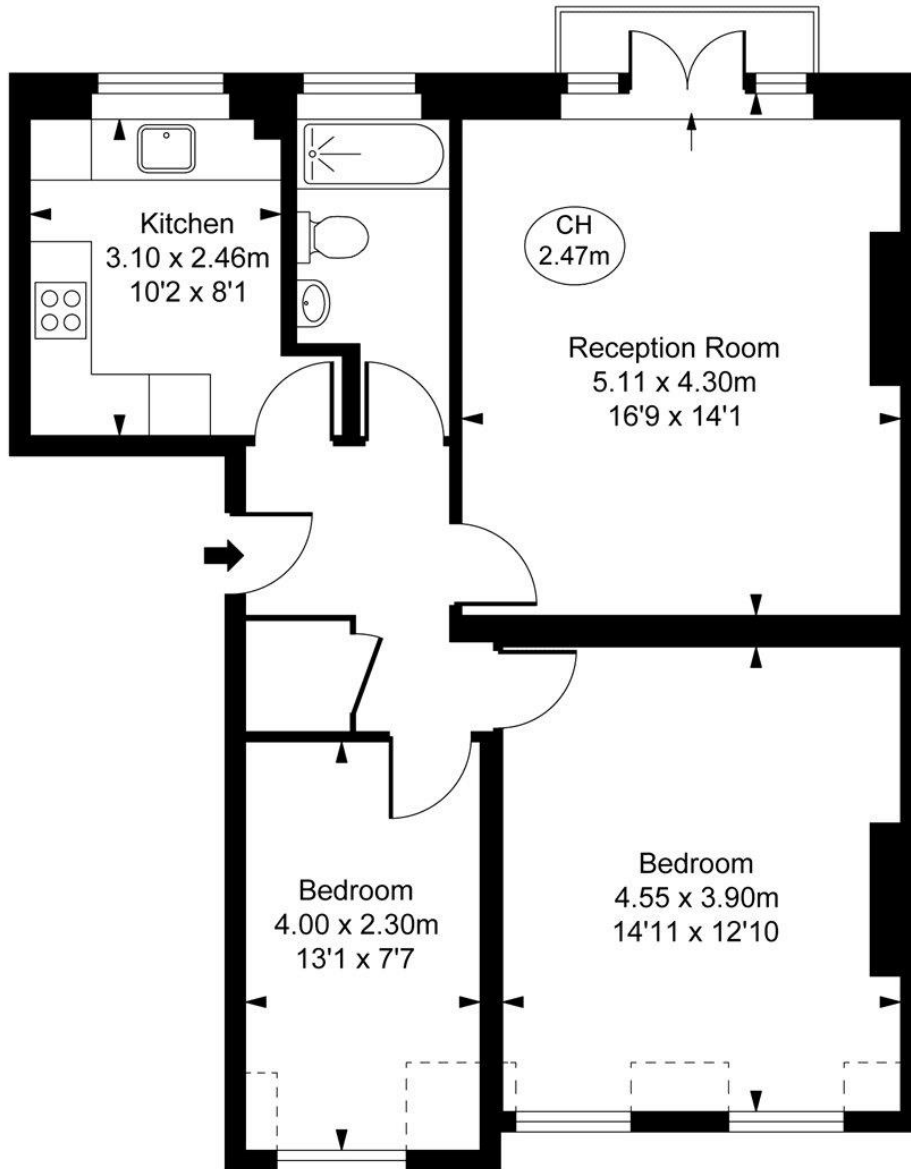
Additional tenant charges apply (fees apply to non-AST tenancies only)
 Tenancy Agreement Fee: £300
 References per Tenant/Guarantor: £60
 Inventory check (approx. £100 – £250 inc. VAT)
 chestertons.co.uk/property-to-rent/applicable-fees



Gower Street, WC1E
Approximate Gross Internal Area
70.44 sq m / 758 sq ft

(Including restricted height
under 1.5m)

(CH = Ceiling Heights)



Third Floor

This plan is not to scale. It is for guidance and not for valuation purposes.
All measurements and areas are approximate only, and have been prepared in accordance with the current edition of the RICS Code of Measuring Practice.
© Fulham Performance

