



Broad Court

Covent Garden, WC2B

£5,200 per month
(£1,200 per week)

Beautifully interior designed apartment situated on a quiet yet centrally located pedestrianized street in Covent Garden's Opera Quarter. The property has tons of natural light and is finished to an immaculate standard enjoying roof top views.

CHESTERTONS



Broad Court

Covent Garden, WC2B

- Spectacular and beautifully presented top floor apartment within an imposing red brick Georgian building.
- The Opera Quarter is surrounded by world famous theatres, eateries and bars as well as boutique shopping.

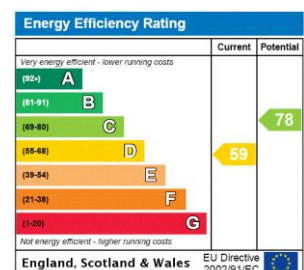


Chestertons are proud to exclusively offer this beautifully interior designed two bedroom, two bathroom penthouse apartment situated on Broad Court, a quiet yet centrally located pedestrianized street at Covent Garden's Opera Quarter.

The property benefits from 1200 square feet of internal living space, comes furnished and has tons of natural light and is finished to an immaculate standard enjoying wonderful roof top views.

Location could not be better with nearby stations including Covent Garden station (Piccadilly Line), Holborn (Central Line/Piccadilly) & Tottenham Court Road (Elizabeth Line, Central Line, Northern Line).

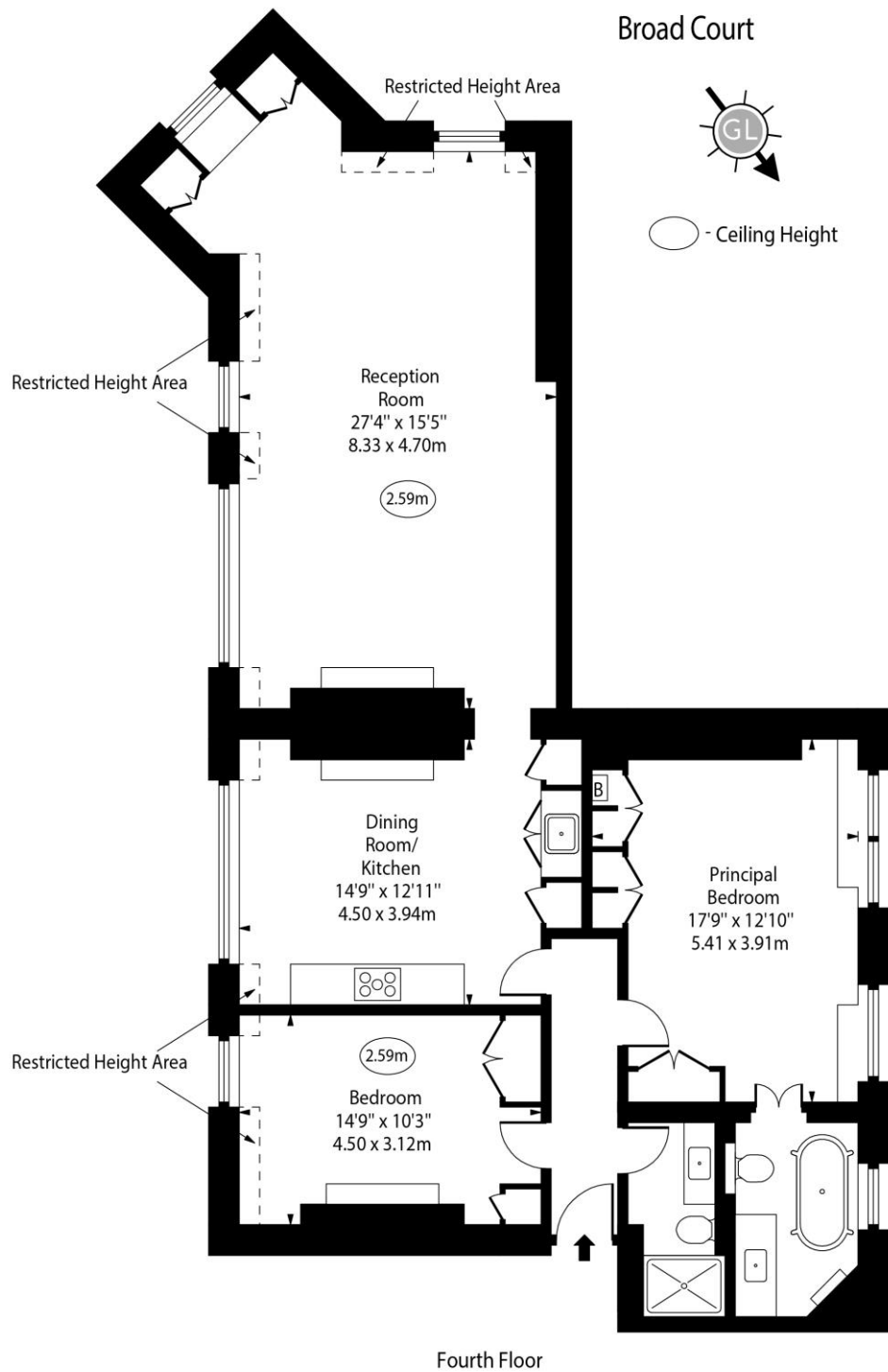
Minimum Term: 12 months
Deposit Required: £7,200.00
Local Authority: City of Westminster
Council Tax Band: G
EPC Rating: D
Furnished



Chestertons Covent Garden Lettings

196 Shaftesbury Avenue
 Covent Garden
 London
 WC2H 8JF
coventgardenlettingsusers@chestertons.co.uk
 02030408400
chestertons.co.uk

Additional tenant charges apply (fees apply to non-AST tenancies only)
 Tenancy Agreement Fee: £300
 References per Tenant/Guarantor: £60
 Inventory check (approx. £100 – £250 inc. VAT)
chestertons.co.uk/property-to-rent/applicable-fees



Approx Gross Internal Area 1207 Sq Ft - 112.13 Sq M
Approx. Floor Area Including Restricted Heights 1235 Sq Ft - 114.73 Sq M

For Illustration Purposes Only - Not To Scale
www.goldlens.co.uk
Ref. No. 019346K