



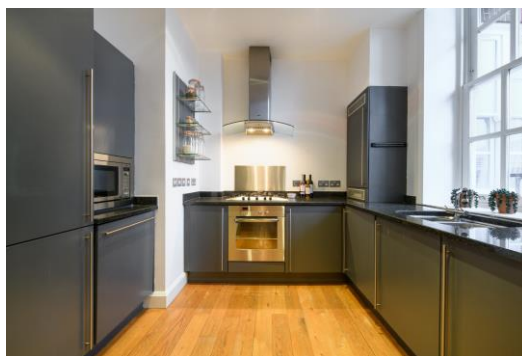
# Wellington Street

London, WC2E

£4,766.67 per month  
(£1,100 per week)

This impressive two-bedroom apartment is located on the second floor of a charming period building, just moments from the sought-after Covent Garden Piazza. The property features a spacious reception room, bathed in natural light & private balcony!

**CHESTERTONS**



# Wellington Street

London, WC2E

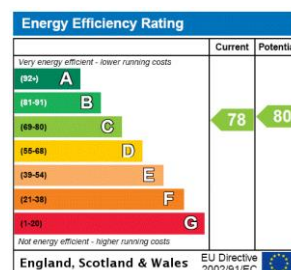
- Lift Access
- Private Balcony
- Ample Storage
- Over 1000sqft



This impressive two-bedroom apartment is located on the second floor of a charming period building, just moments from the sought-after Covent Garden Piazza. The property features a spacious reception room, bathed in natural light, which opens onto a private balcony.

The apartment boasts two double bedrooms, both with ample storage and brand new carpets. One bedroom benefits from an en-suite, while the other is served by a separate, brand-new main bathroom. Both bathrooms have been fully renovated to a high standard. Additionally, the apartment includes a separate, fully equipped kitchen.

**Minimum Term:** 12 months  
**Deposit Required:** £5,500.00  
**Local Authority:** Westminster  
**Council Tax Band:** G  
**EPC Rating:** C  
**Furnished**

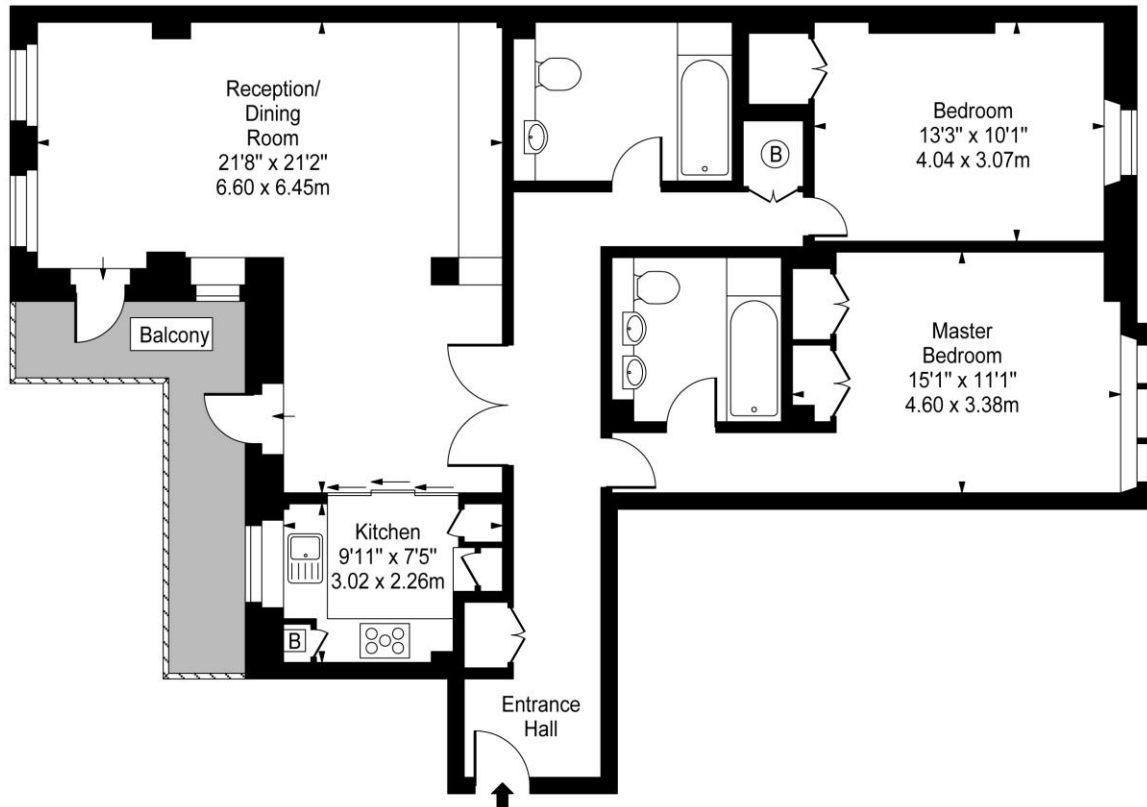
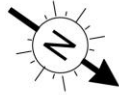


### Chestertons Covent Garden Lettings

196 Shaftesbury Avenue  
 Covent Garden  
 London  
 WC2H 8JF  
[coventgardenlettingsusers@chestertons.co.uk](mailto:coventgardenlettingsusers@chestertons.co.uk)  
 02030408400  
[chestertons.co.uk](http://chestertons.co.uk)

Additional tenant charges apply (fees apply to non-AST tenancies only)  
 Tenancy Agreement Fee: £300  
 References per Tenant/Guarantor: £60  
 Inventory check (approx. £100 – £250 inc. VAT)  
[chestertons.co.uk/property-to-rent/applicable-fees](http://chestertons.co.uk/property-to-rent/applicable-fees)

Wellington Street



Second Floor

Approx Gross Internal Area **1088 Sq Ft - 101.08 Sq M**

For Illustration Purposes Only - Not To Scale

[www.goldlens.co.uk](http://www.goldlens.co.uk)

Ref. No. 009520J

